

Southwest Regional Transportation Study

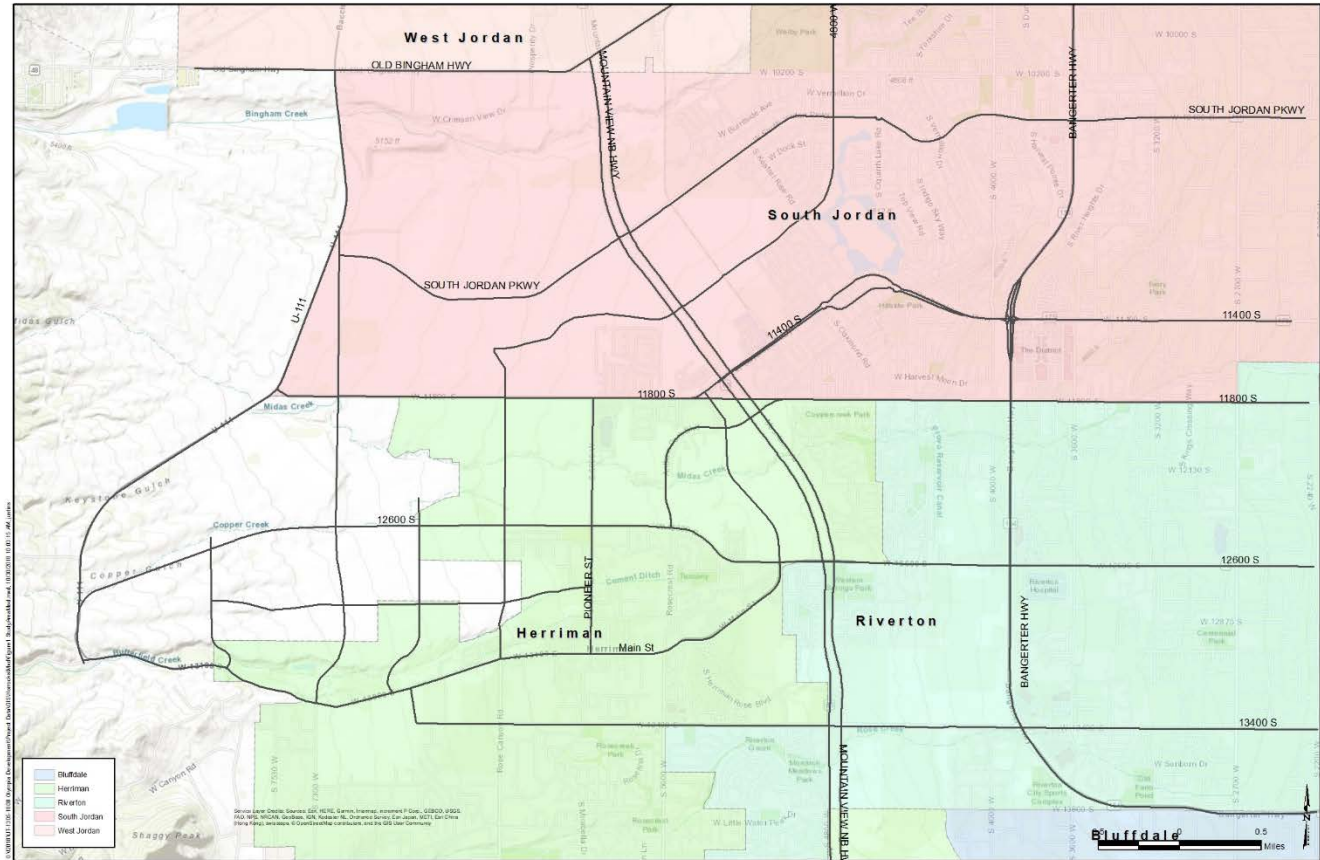
SALT LAKE COUNTY COUNCIL - OCTOBER 30, 2018

Multijurisdictional Collaboration



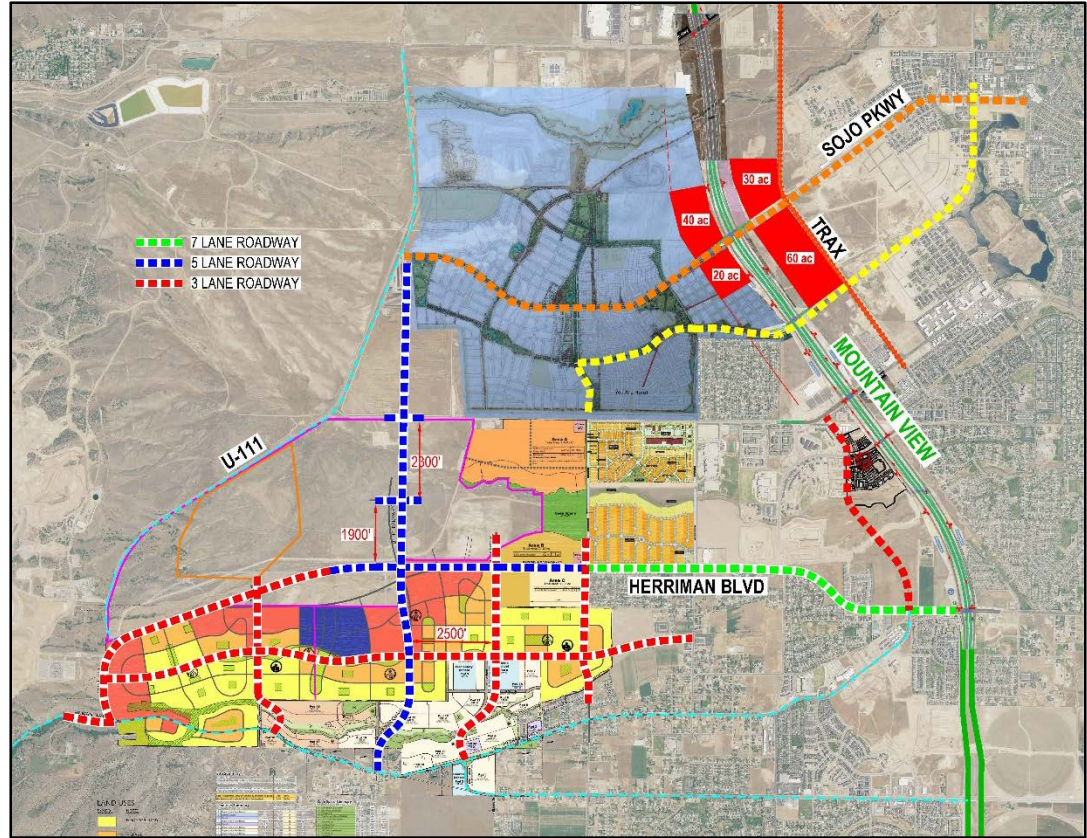
Study Area

- Regional transportation review
- Travel demand model (2040)



Land Use

- Land use reviewed (2040)
- Study updated land use plan to include new growth
- Planned/proposed developments



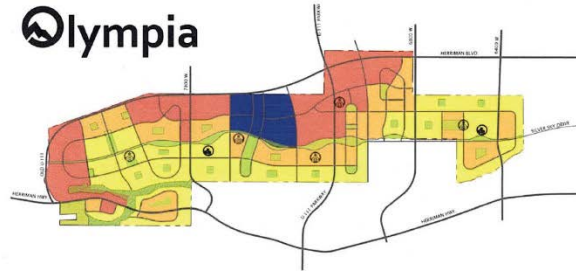
Traffic Impact Study

- Conducted May 2018
- Study updated land use plan to include new growth
- Future TIS updates



HALES ENGINEERING
innovative transportation solutions

Olympia Traffic Impact Study



Salt Lake County, Utah

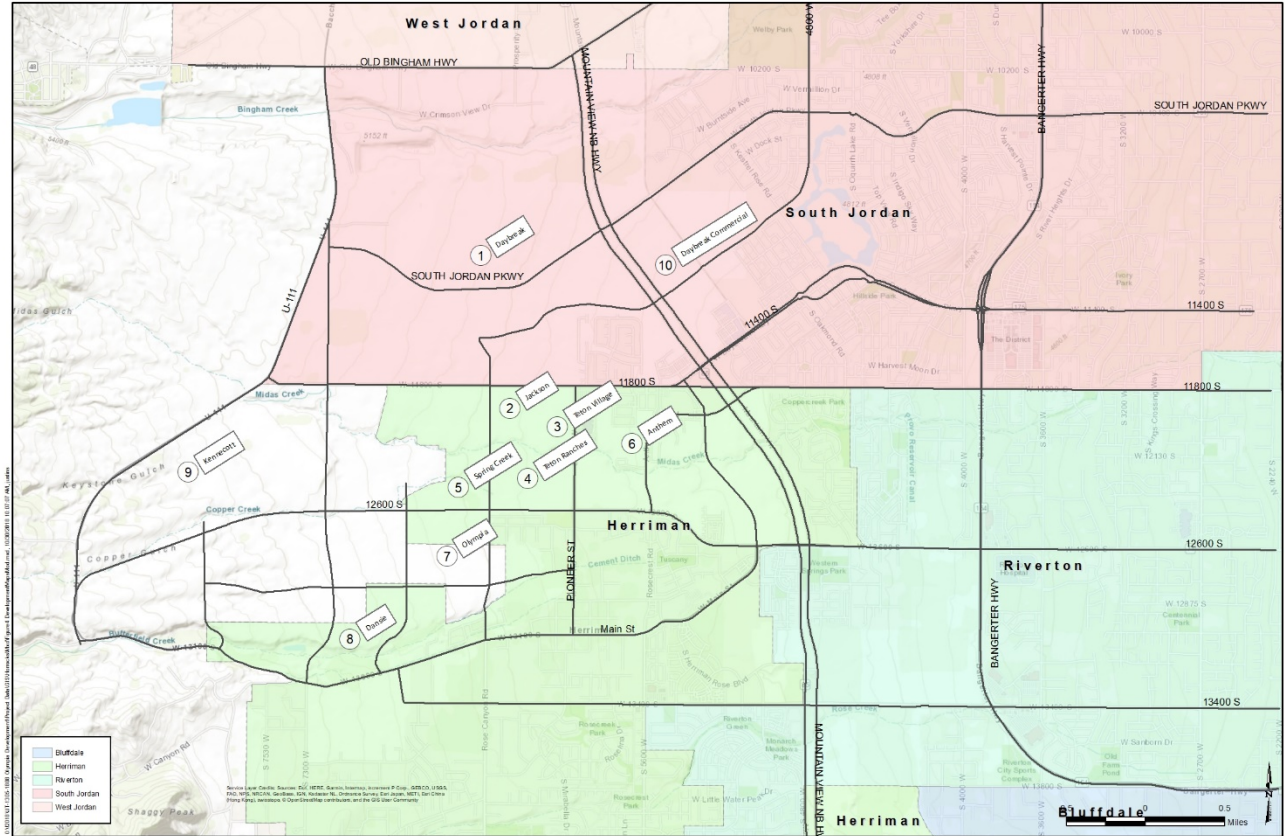
May 2018

UT17-1057



Development

- Planned developments
- Proposed developments



Planned Transportation Projects / Phasing (WFRC)

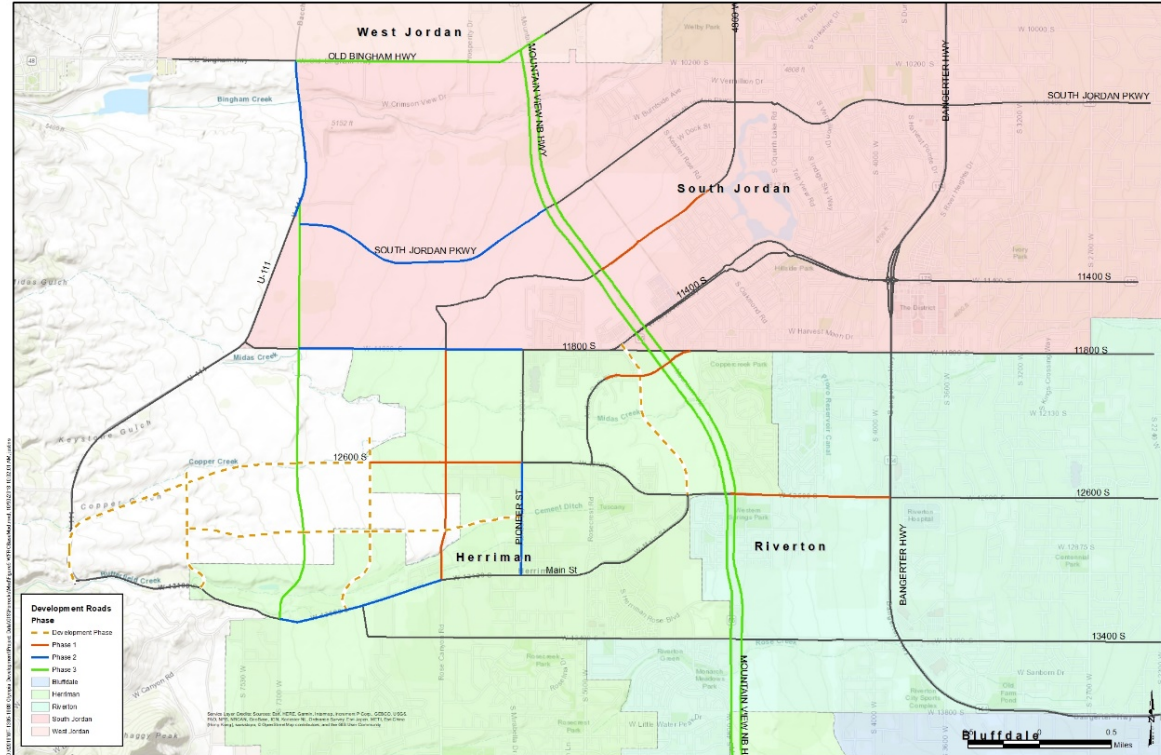
Development Roads

Phase

- Development Phase
- Phase 1
- Phase 2
- Phase 3

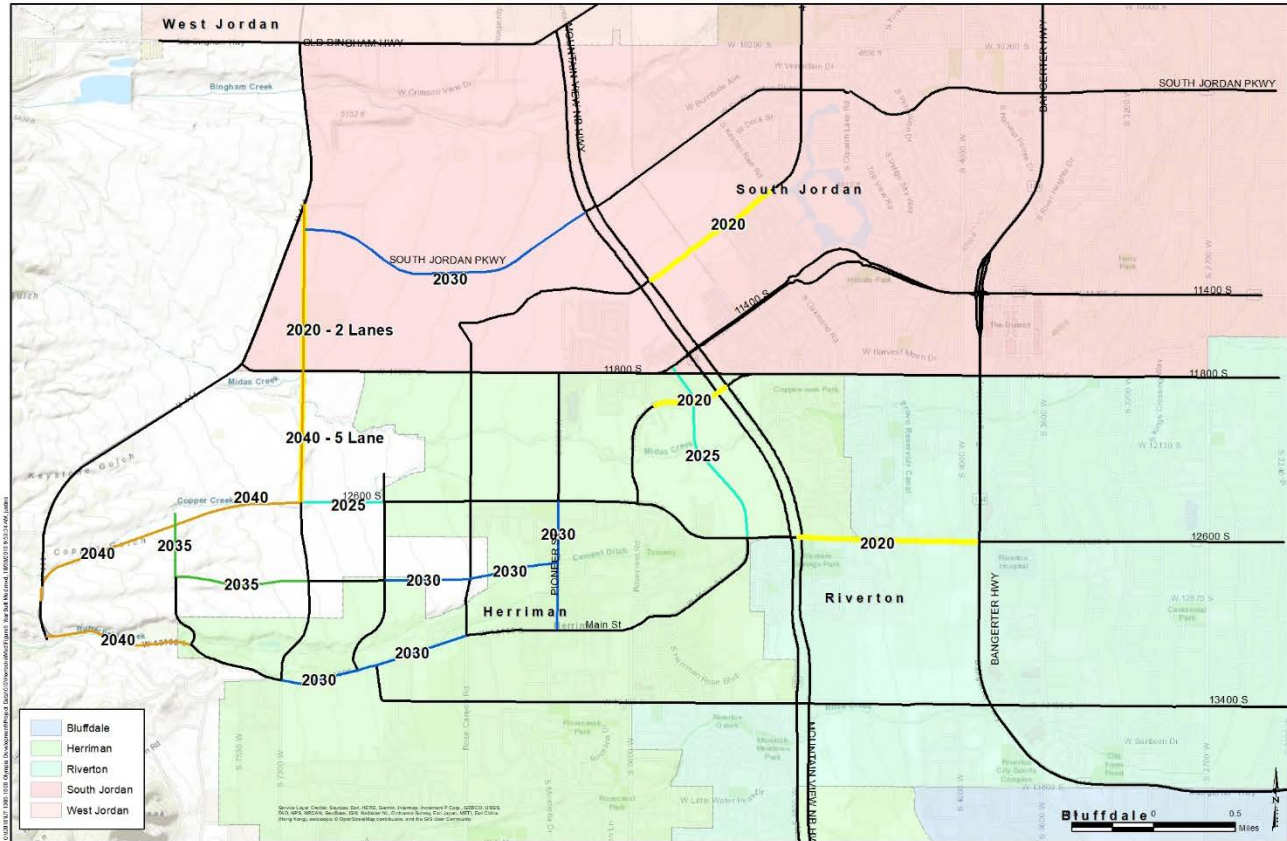
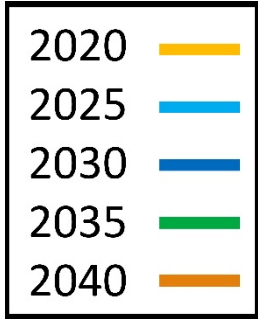
Municipalities

- Bluffdale
- Herriman
- Riverton
- South Jordan
- West Jordan



<https://wfrc.maps.arcgis.com/apps/Viewer/index.html?appid=658e9a3ba2c74684a7af2b9726ae7b28>

Study Results: Project Phasing



12600 South

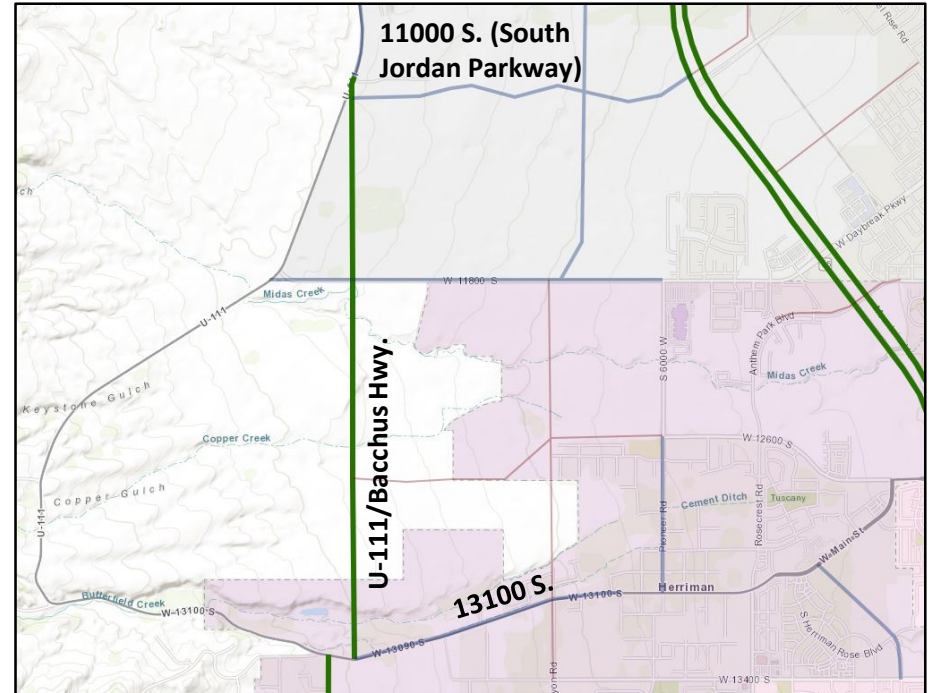
(Mountain View Corridor to Bangerter Highway)

- This section of road will not accommodate current or future traffic without mitigation.
- Multiple mitigation options being considered.
 - Frontage roads
 - System to system
 - Increased alternative mode use
- Difference between previously approved plan and current plan is approximately 2,000 vehicles per day.



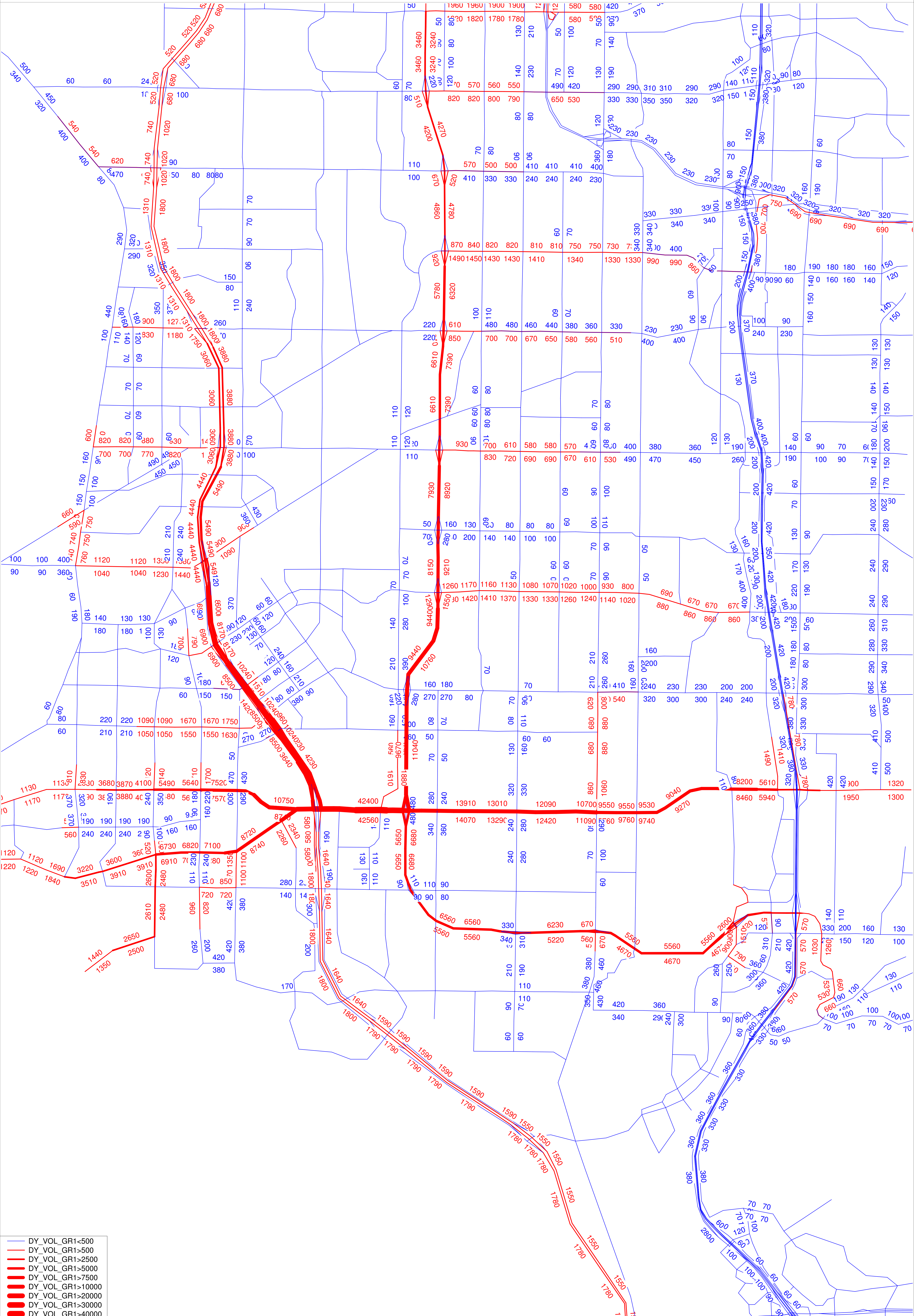
U-111/ Bacchus Highway

- Currently on WFRC's Regional Transportation Plan for Phase 3 (five lanes).
- Two-lane road needed from 11000 South (South Jordan Parkway) to 13100 South immediately.
- Project will move traffic to the north and improve congestion on 12600 South.



Questions and Comments

2040 Olympia - v8.1 TDM
 Select Link Analysis - 12600 South Between Bangerter and MVC
 10/30/18



- DY_VOL_GR1<500
- DY_VOL_GR1>500
- DY_VOL_GR1>2500
- DY_VOL_GR1>5000
- DY_VOL_GR1>7500
- DY_VOL_GR1>10000
- DY_VOL_GR1>20000
- DY_VOL_GR1>30000
- DY_VOL_GR1>40000