

South Valley Sewer District



THE MISSION

- IT IS THE MISSION AND PURPOSE OF THE SOUTH VALLEY SEWER DISTRICT TO PROVIDE PUBLIC SANITARY SEWER SERVICE, INCLUDING COLLECTION AND TREATMENT OF SEWAGE, TO ALL PROPERTIES LOCATED WITHIN THE BOUNDARIES OF THE DISTRICT IN AN ORDERLY MANNER AS RAPIDLY AS DISTRICT FINANCES WILL PERMIT. THE BOARD OF TRUSTEES RETAINS THE RIGHT, IN ITS SOLE DISCRETION, TO DETERMINE THE FINANCIAL FEASIBILITY, LOCATION OF, AND TIME OF INSTALLATION OF ALL EXTENSIONS OF THE DISTRICT'S SEWER SYSTEM.

THE BEGINNING

- SALT LAKE COUNTY SEWERAGE IMPROVEMENT DISTRICT #1
 - IMPROVEMENT DISTRICT
 - FOUNDED SEPTEMBER 29, 1961
 - RESOLUTION OF THE SL COUNTY COMMISSION
 - INCLUDED 54 SQUARE MILES OF DRAPER, SANDY, RIVERTON, SOUTH JORDAN AND BLUFFDALE

Tri Cities POTW

THE BEGINNING

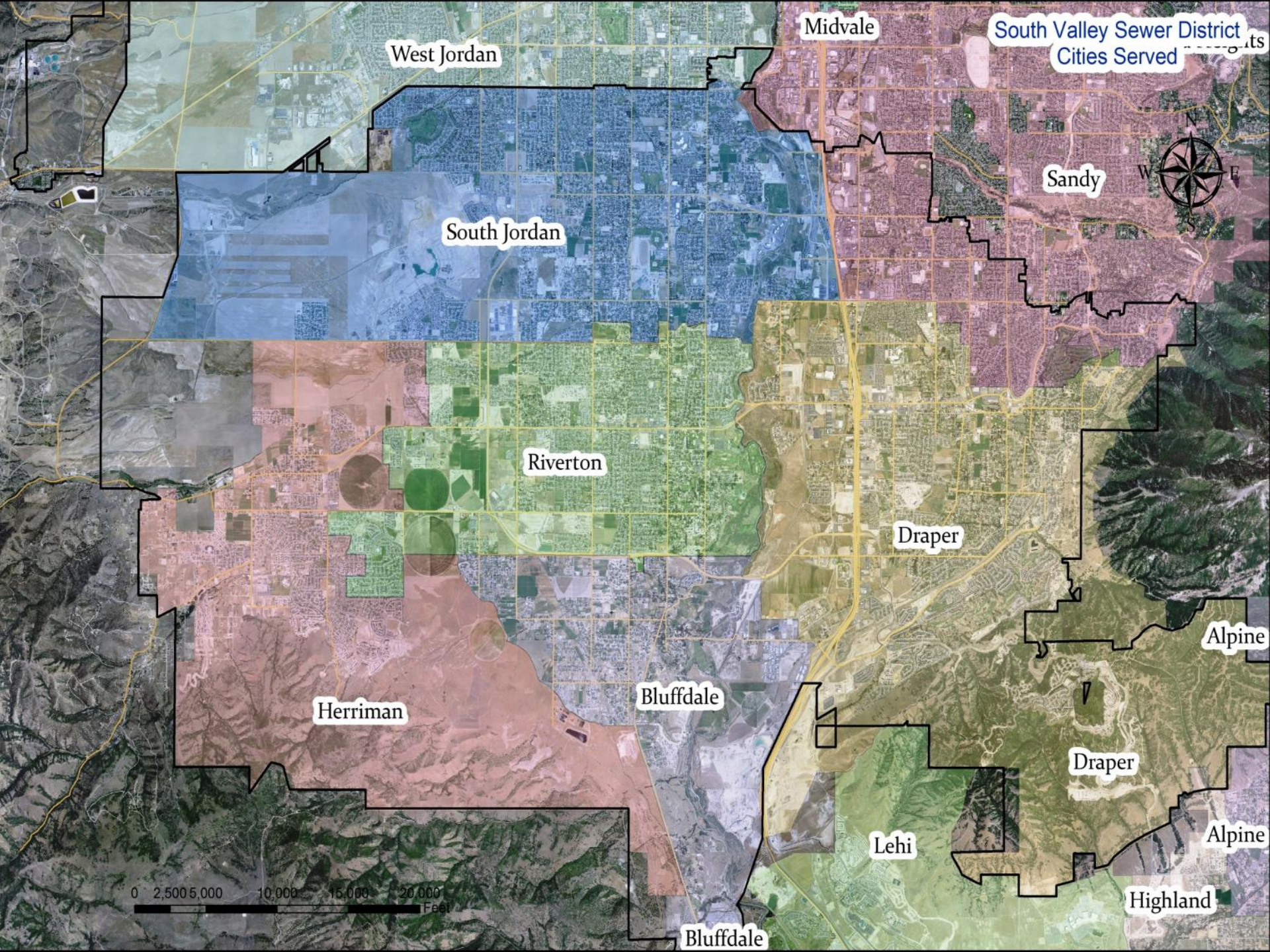
- 1973 - FIRST PIPES INSTALLED
FLOWS TO TRI CITY SEWAGE DISPOSAL PLANT IN MIDVALE
- 1985 - SOUTH VALLEY WATER RECLAMATION FACILITY
COMES ONLINE
- 2012 - JORDAN BASIN WRF COMES ONLINE
- RAPID GROWTH
 - 2018 - 110 SQUARE MILES (ESTIMATED 227,192 PEOPLE)
 - BUILDOUT - ESTIMATED 575,500 PEOPLE

7200 South

Interstate 15

Future SV WRF Site

7800 South



West Jordan

Midvale

South Valley Sewer District
Cities Served

Sandy

South Jordan

Riverton

Draper

Herriman

Bluffdale

Alpine

Lehi

Draper

Alpine

Highland

Bluffdale

0 2,500 5,000 10,000 15,000 20,000
Feet



DISTRICT TODAY

- OVER 73,111 CONNECTIONS
- 935 MILES OF PIPE
8-INCH TO 60-INCH
CONCRETE, CLAY, PVC, HDPE
- 23,000+ MANHOLES
- THREE TREATMENT PLANTS
- 75 EMPLOYEES

BOARD OF TRUSTEES

- GOVERNING BODY
- SEVEN MEMBERS
 - 3 ELECTED
 - 4 APPOINTED
 - RIVERTON
 - SOUTH JORDAN
 - HERRIMAN
 - BLUFFDALE

South Valley Sewer District
City Appointments

West Jordan

Sandy

South Jordan

Riverton

Draper

Herriman

Bluffdale

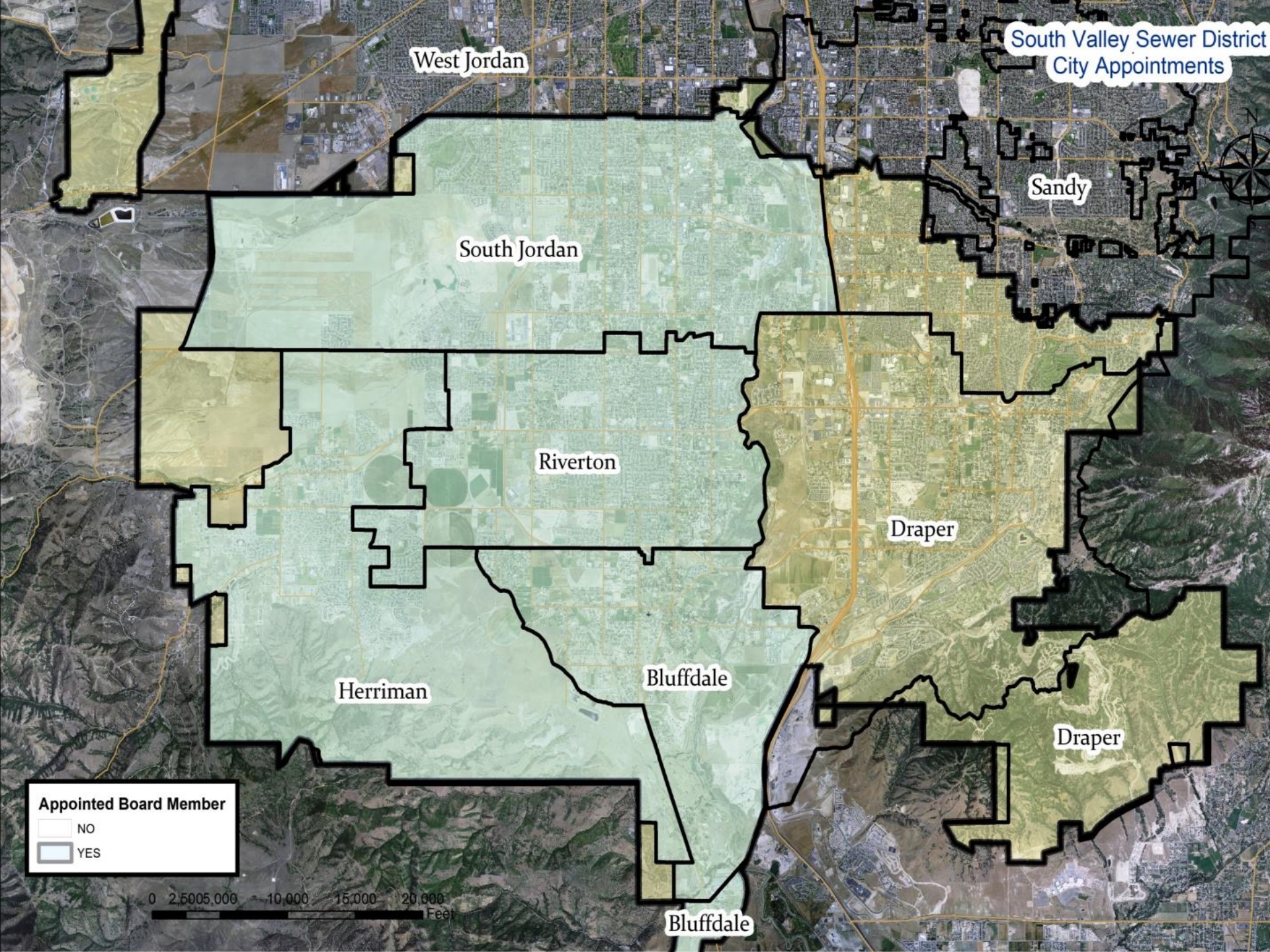
Draper

Appointed Board Member

- NO
- YES

0 2,500 5,000 10,000 15,000 20,000
Feet

Bluffdale



BOARD OF TRUSTEES

- WAYNE BALLARD, CHAIRMAN
(AT LARGE, DRAPER CITY)
- MAYOR TRENT STAGGS,
(RIVERTON CITY)
- CLINT SMITH, (HERRIMAN CITY)
- DALE SMITH
(AT LARGE, DRAPER)
- ALAN SUMMERHAYS
(AT LARGE, DRAPER CITY)
- MAYOR DERK TIMOTHY
(BLUFFDALE)
- MAYOR DAWN RAMSEY
(SOUTH JORDAN)



Services Provided



Jet Crews



Television Inspection Crews



250 6 FT
START 0
STOP 0





BROKEN PIPES

+ 0081.9 FT.

MANHOLE: FROM 4 TO 5

6879.5 FT.



BROKEN LATERAL



GREASE



DENT

09-14-95
000,000|
0,272.3+
00.0

LEAKY LATERAL



SAW BLADE

CHRISTMAS TREE

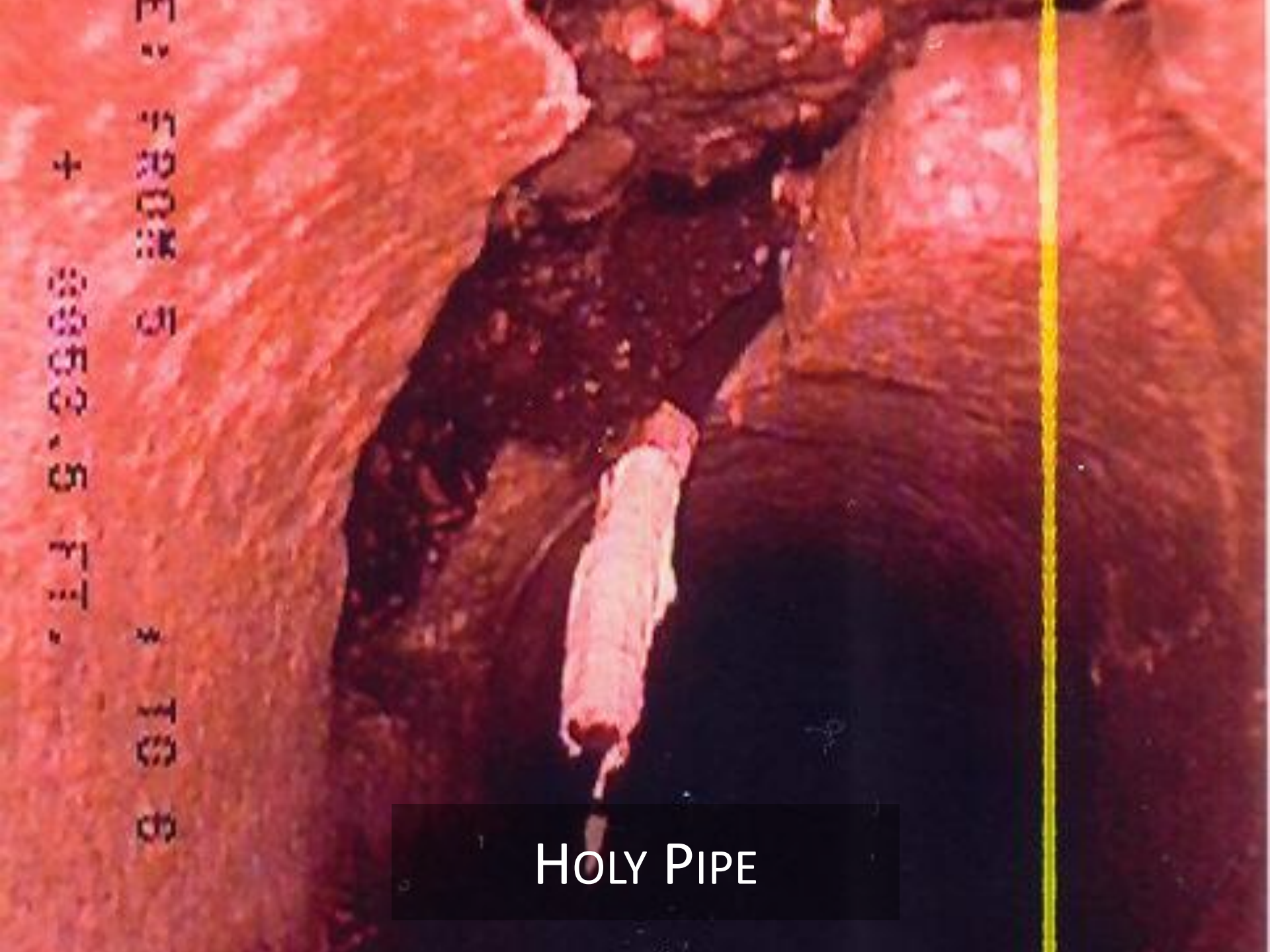
07-31-95
004,005
0,116.7
00.0



+ 8853.5 FT.

5 FROM 5 4 TO 8

HOLY PIPE



INSPECTION

- 268 ACTIVE SUBDIVISIONS
- 3,400 CONNECTIONS IN 2018 (SO FAR)



TREATMENT

An aerial photograph of a wastewater treatment plant. The facility consists of several large, rectangular aeration basins arranged in rows, with concrete walls and metal railings. In the background, there are circular clarifiers and other industrial structures. The surrounding area includes green fields and a residential neighborhood with houses and trees.

- DISTRICT TREATS 18 MGD
- THREE PLANTS

SOUTH VALLEY WATER RECLAMATION

An aerial photograph of a large-scale water reclamation facility. The plant features several prominent circular aeration tanks with central agitators, arranged in a grid-like pattern. To the right of these tanks are several long, rectangular secondary treatment basins. The facility is surrounded by green grass and paved walkways. In the background, a residential neighborhood with houses and trees is visible, along with a winding canal or river. The overall scene is well-maintained and organized.

SVSD IS ONE OF 5 MEMBER ENTITIES

TIMPANOGOS SPECIAL SERVICE DISTRICT

An aerial photograph of a wastewater treatment plant. The facility includes several large rectangular aeration basins, circular clarifiers, and rectangular secondary clarifiers. There are also several buildings, including a control building and a pump station. The plant is situated near a body of water and a road. The surrounding area is mostly flat and appears to be under construction or recently completed.

SVSD IS ONE OF 10 MEMBER ENTITIES
(FLOWS FROM DRAPER IN UTAH COUNTY TREATED AT TSSD)



JORDAN BASIN WATER RECLAMATION FACILITY

OPENED JUNE 2012

SVSD IS SOLE OWNER

WHERE ARE WE HEADED

- ESTIMATED 50% BUILD OUT
 - CITIES GROWTH/DENSITIES
 - SANDY/DRAPER – UNLIMITED HEIGHT/DENSITIES
 - PRISON PROPERTY
 - BLUFFDALE (5 ACRES PER LOT TO 500 SF LOTS)
- RAPID GROWTH
 - 2018 – 110 SQUARE MILES (ESTIMATED 227,192 PEOPLE)
 - BUILDOUT – ESTIMATED 575,500 PEOPLE
 - EXPANSION
 - JBWRF FROM 15 MGD TO 30 MGD
 - VARIOUS COLLECTION LINES WILL BE INSTALLED/UPSIZED AS NECESSARY