



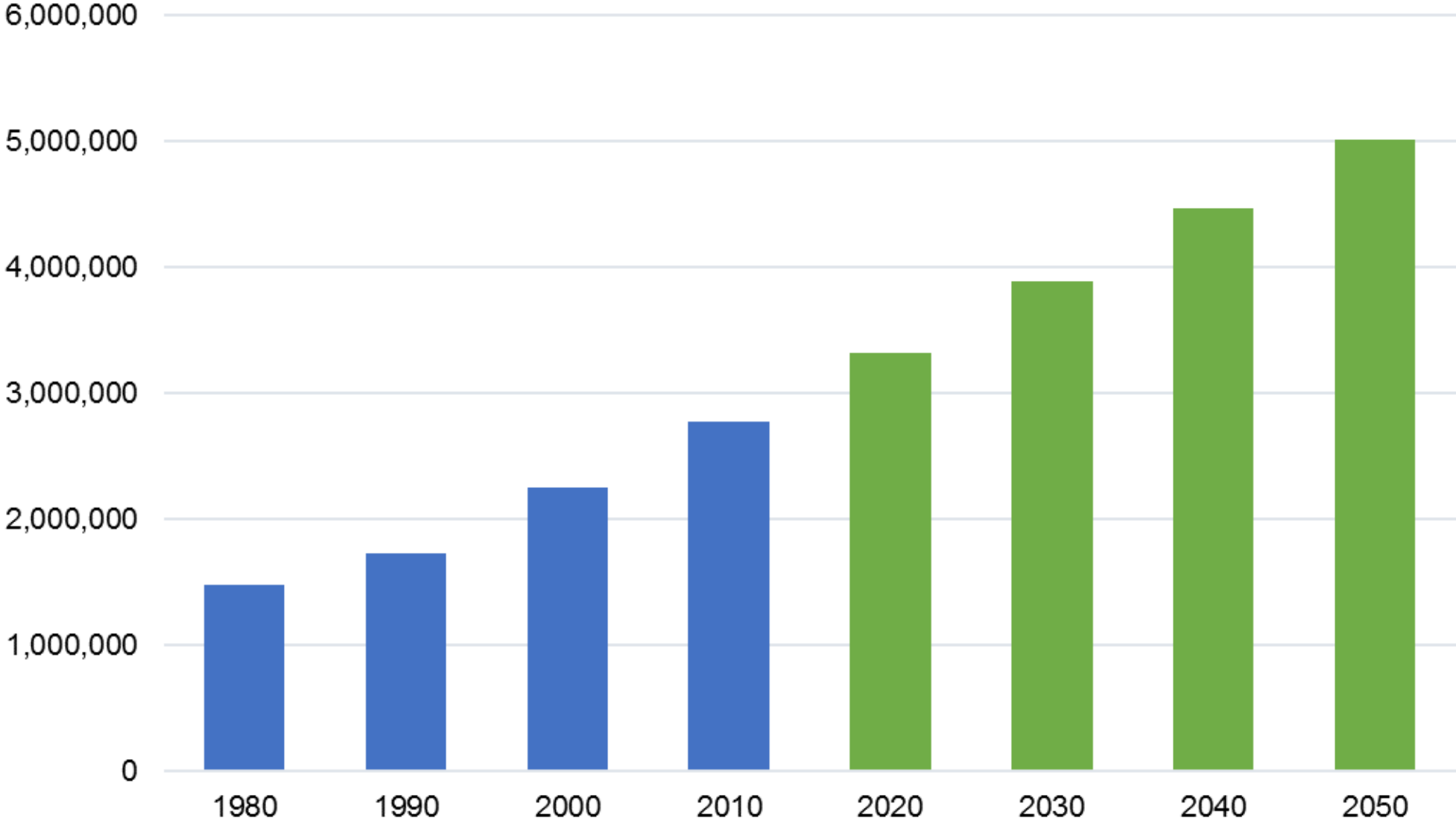
# Wasatch Choice 2050 Regional Vision

Salt Lake County Council | July 31, 2018





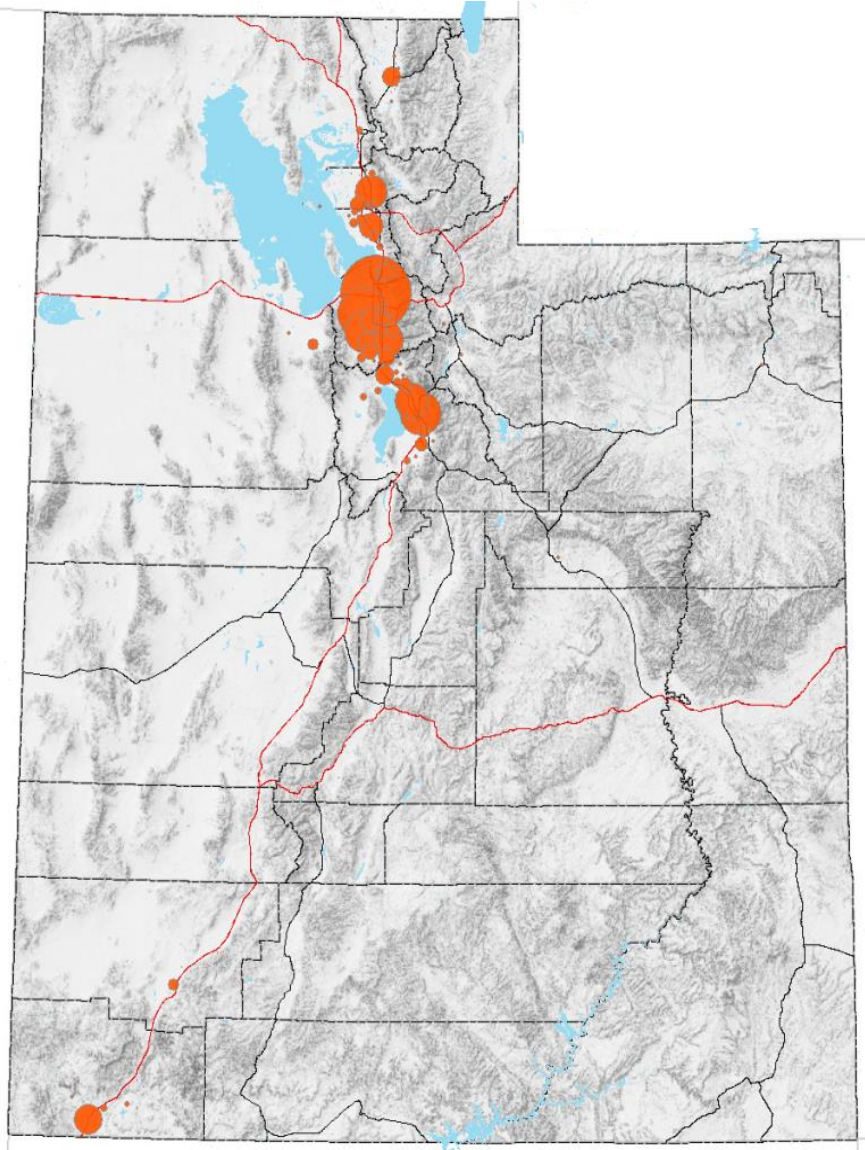
# Utah's Population Growth



# Utah's Population Growth



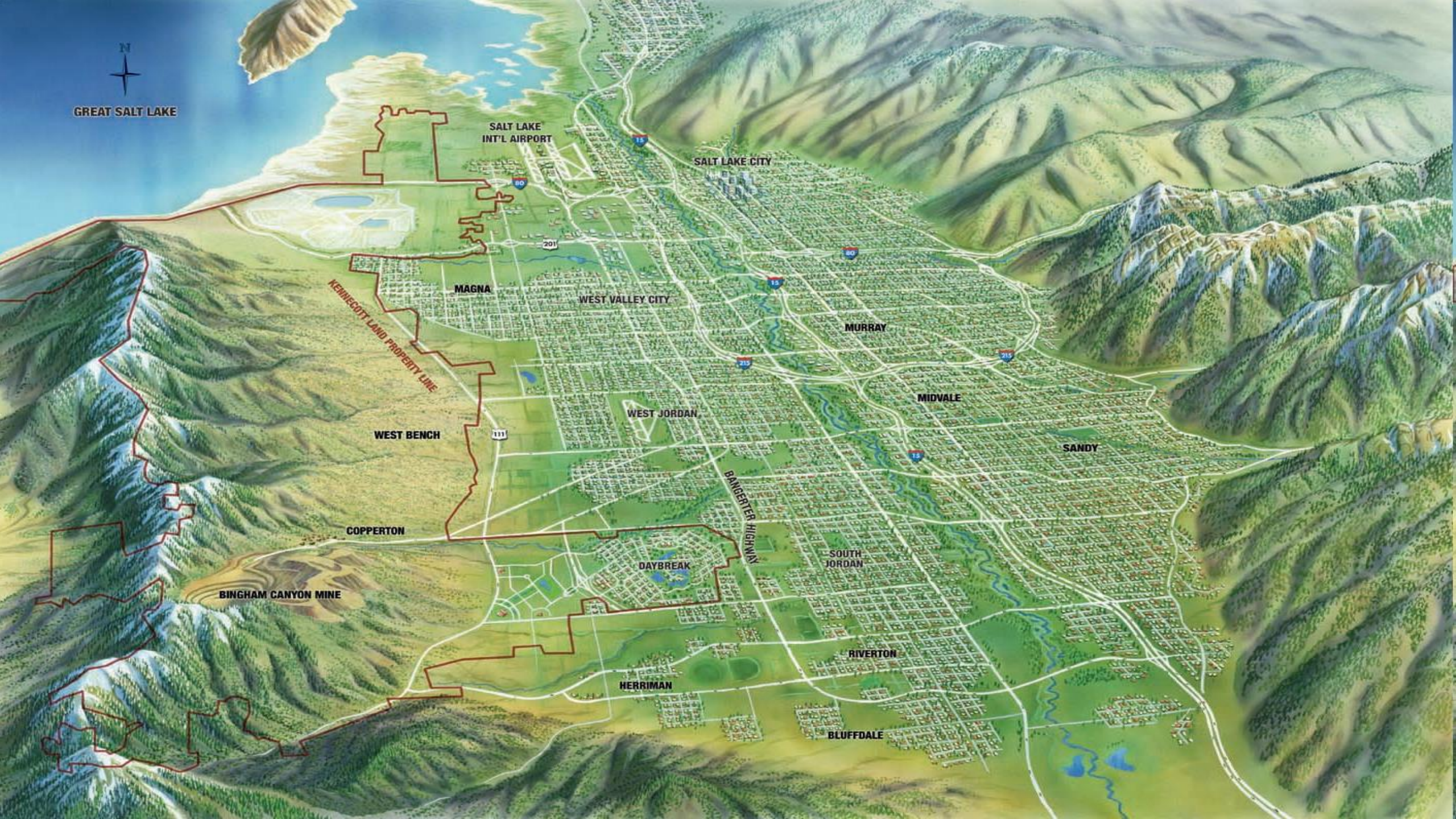
# Utah's Population Growth



# Utah's Population Growth









# Current Challenges



# More Time Traveling



Today



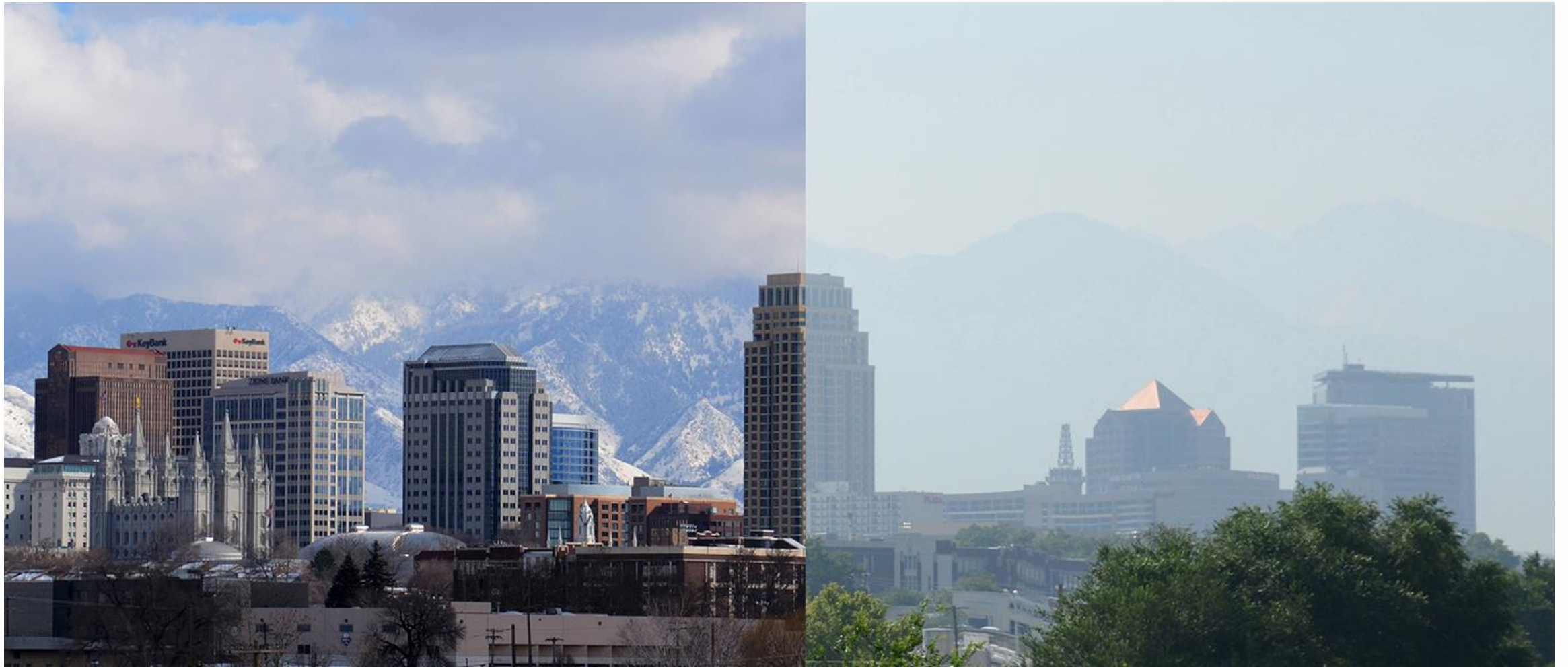
Current Path







# Air Quality



*Photo courtesy of UTA.*



# Decreased Access to Opportunity

**Today**



Average resident can access  
**458K jobs**  
within a 30 minute commute

**2050 from Current Path**



Average resident can access  
**290K jobs**  
within a 30 minute commute

# More Crowded



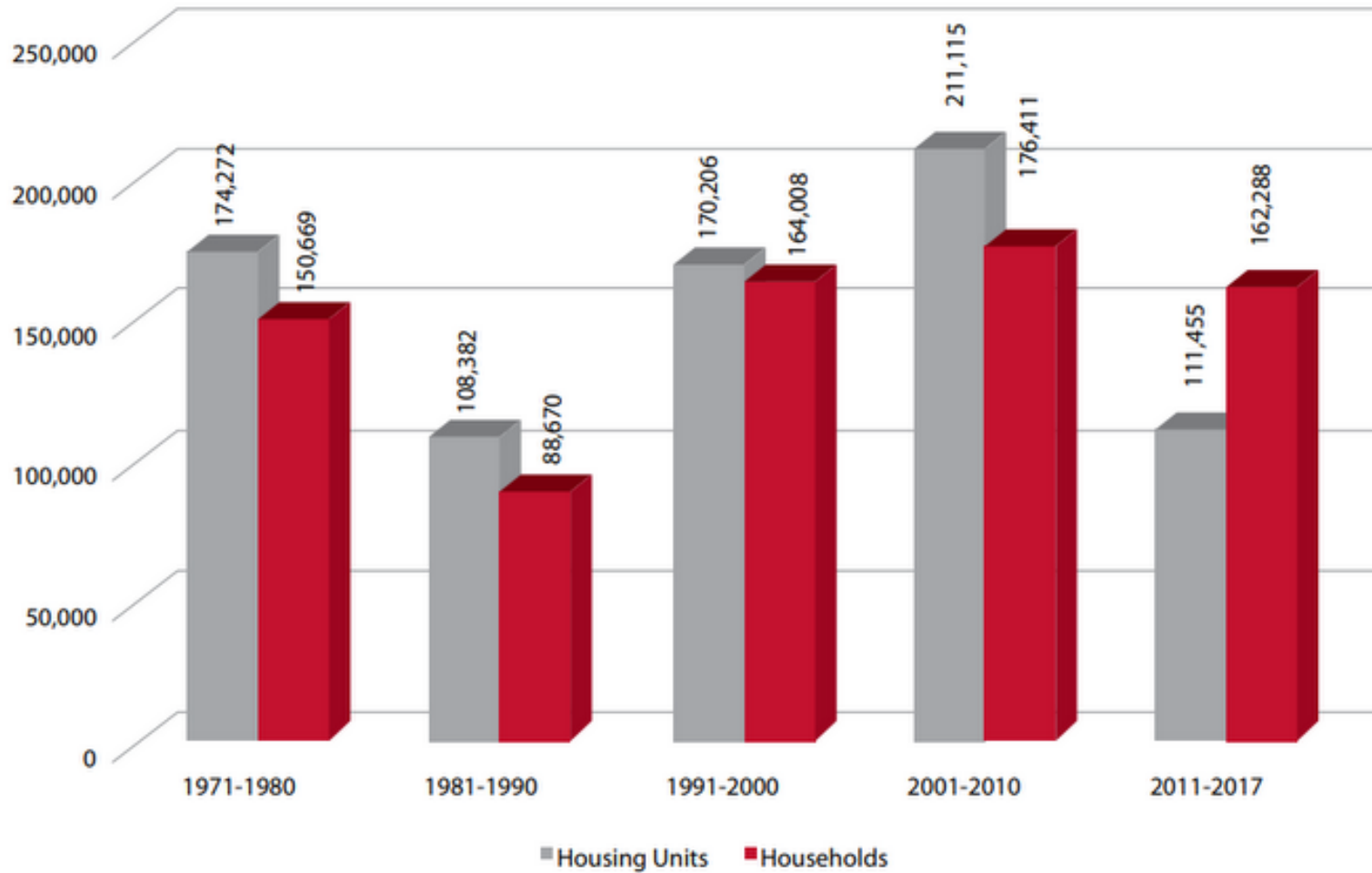
Photo courtesy of Tom Kelly via Flickr.





# Demand is exceeding supply

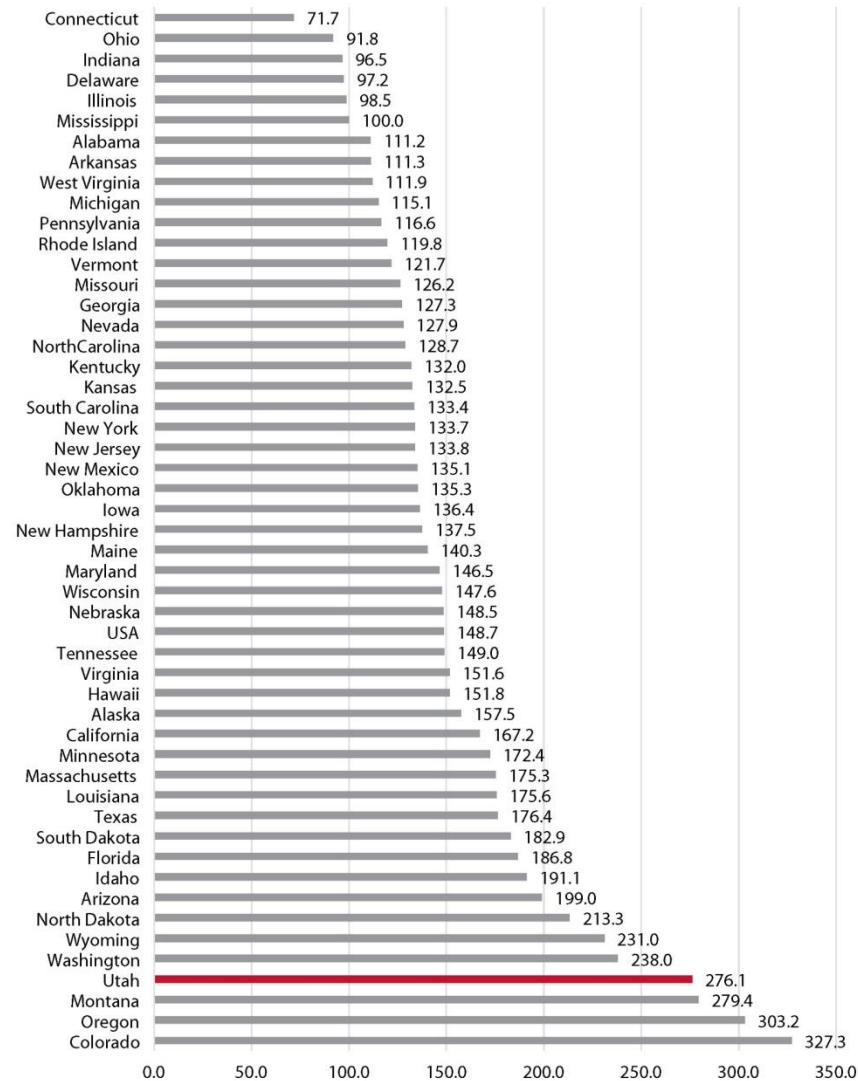
Figure 2: Increase in Households Compared to Increase in Housing Units for Utah



Source: Ivory-Boyer Construction Database, Kem C. Gardner Policy Institute

# More Expensive

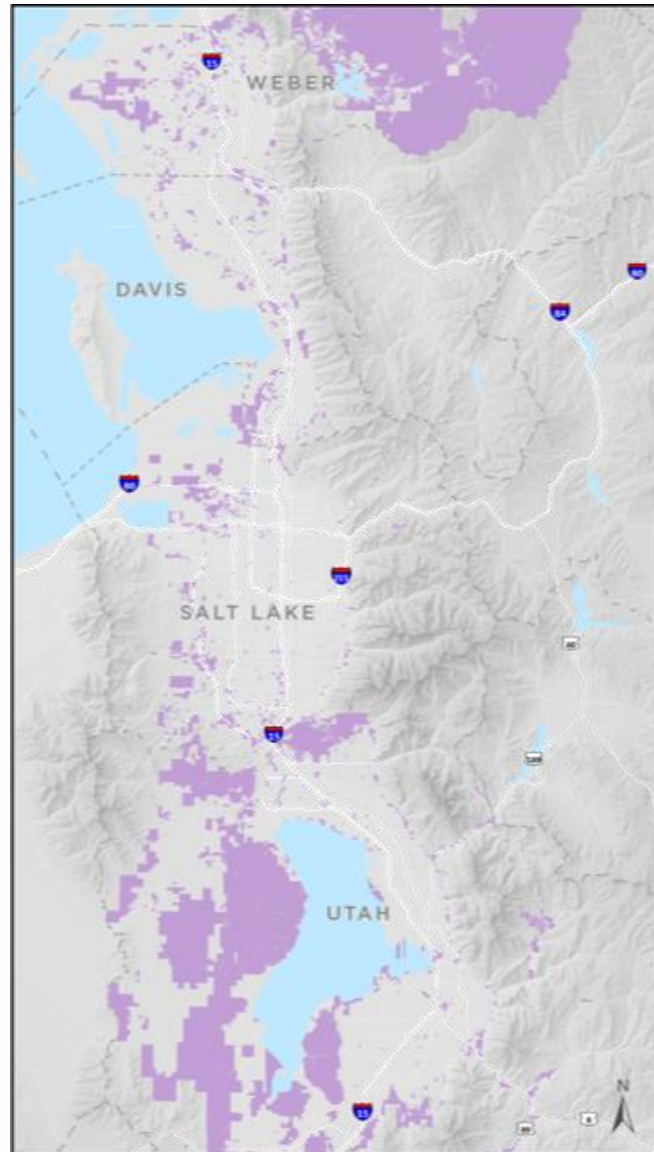
Figure 1: Percent Change in Housing Price Index by State – Purchase Only  
1991 to third quarter 2017



Source: Federal Housing Finance Agency.



# Little vacant land along the Wasatch Front



In 15 years, almost all major pieces of vacant land between Ogden and Provo will be under development.

Source: WFRC using county assessor data









# WASATCH CHOICE

— 2050 —

# Wasatch Choice Vision: Process

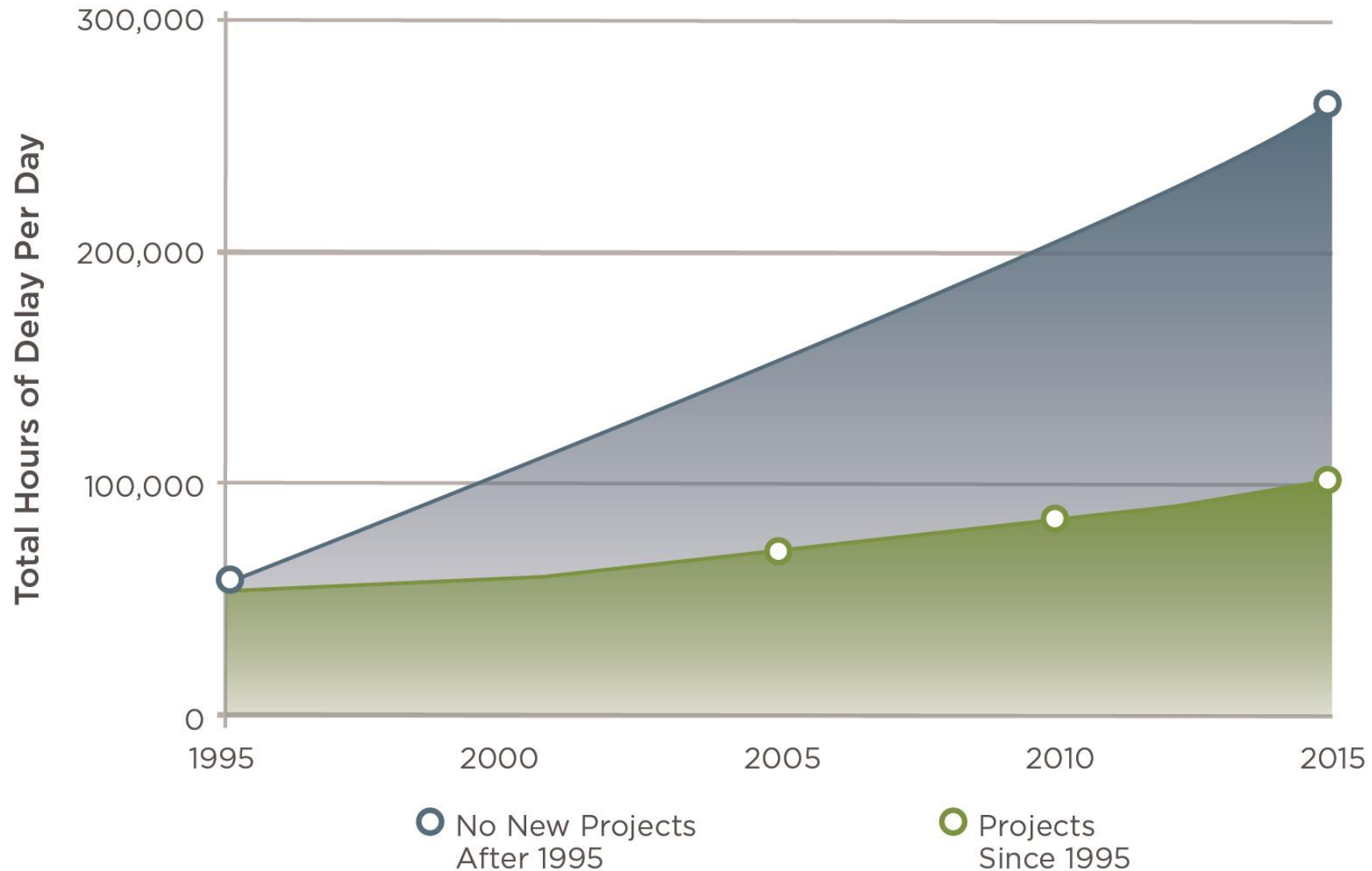




# Key Strategies



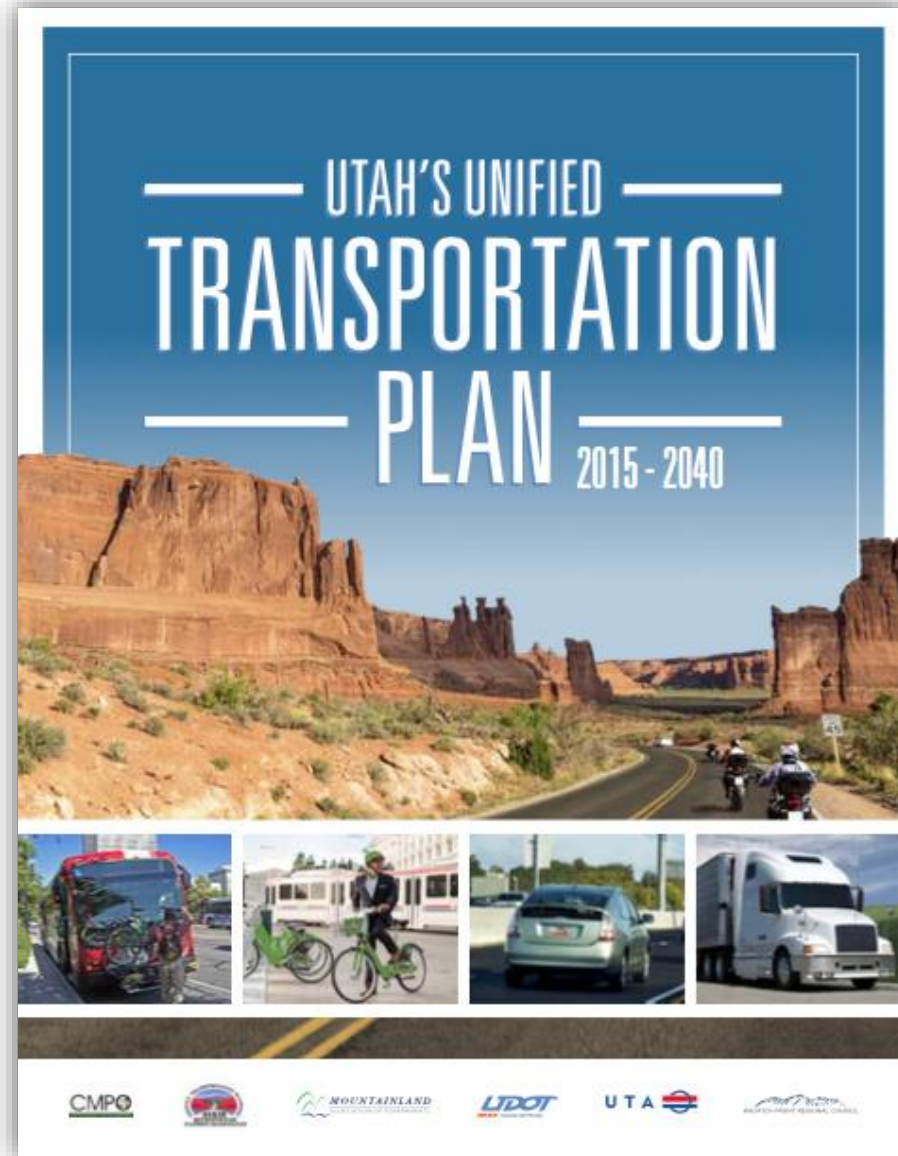
# Key Strategy: Provide Transportation Choices



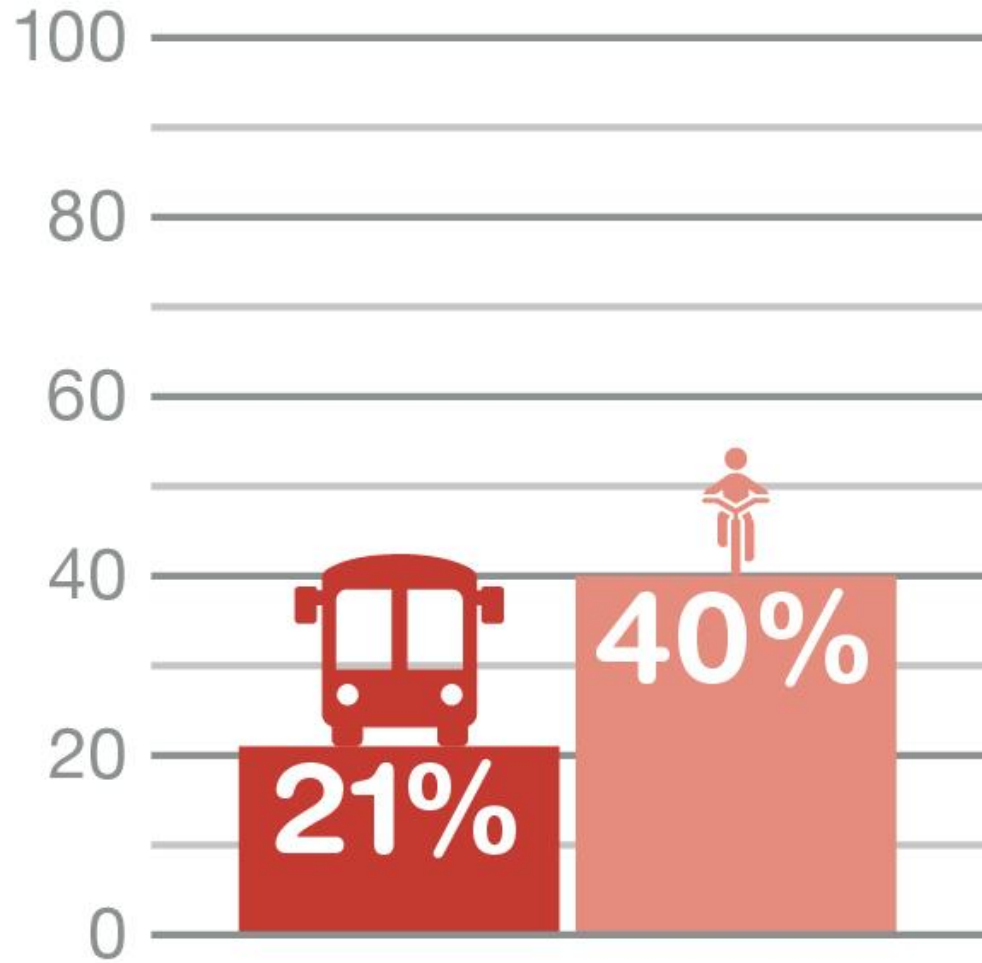
Source: WFRC and MAG Travel Demand Model, Version 7, Travel Delay.



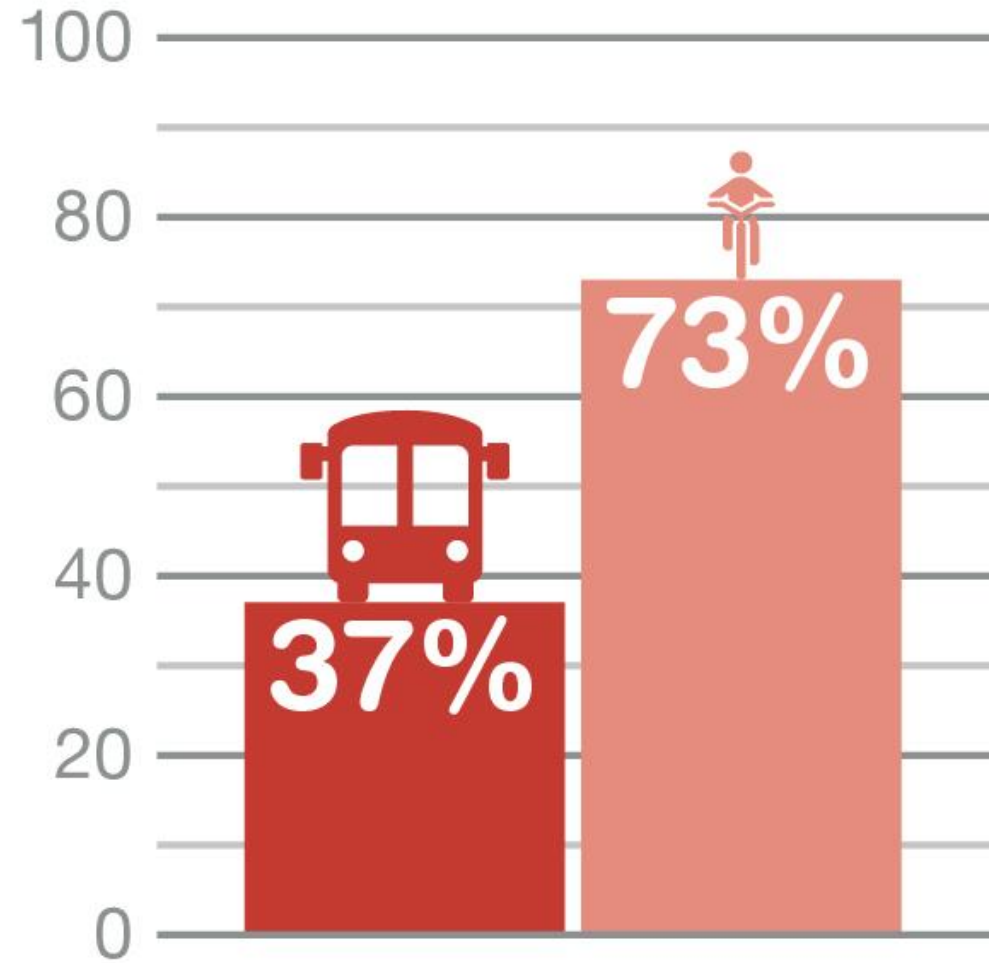
# Key Strategy: Provide Transportation Choices



# Key Strategy: Provide Transportation Choices



Today



Draft Vision



# Key Strategy: Provide Transportation Choices



Current Path



Draft Vision

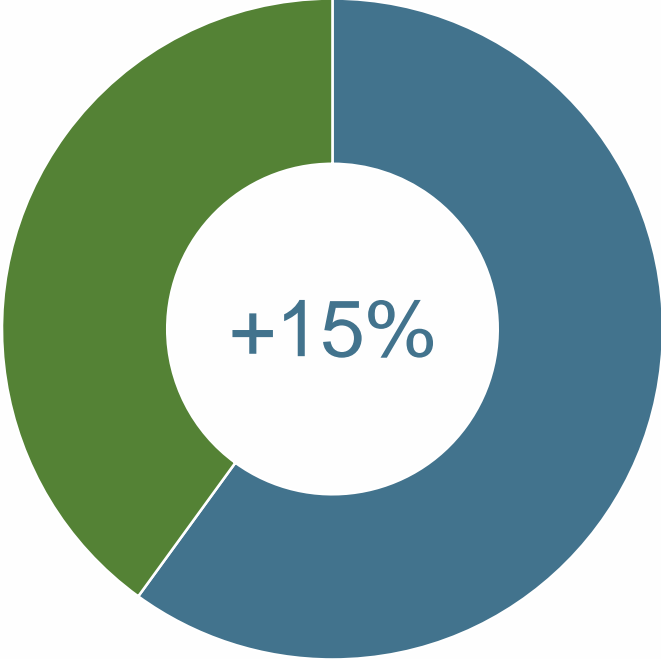
# Key Strategy: Support Housing Options

Today



- Single-Family: 75%
- Multi-Family/Townhouse: 25%

Draft Vision



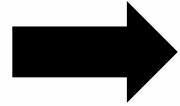
- Single-Family: 60%
- Multi-Family/Townhouse: 40%



# A Few Housing Policy Considerations

---

1. Utah's growth mostly comes from our large families.



We have a responsibility.

2. If housing isn't built in one location, it will be built in another.



Is there a risk of bigger negative development impacts elsewhere?

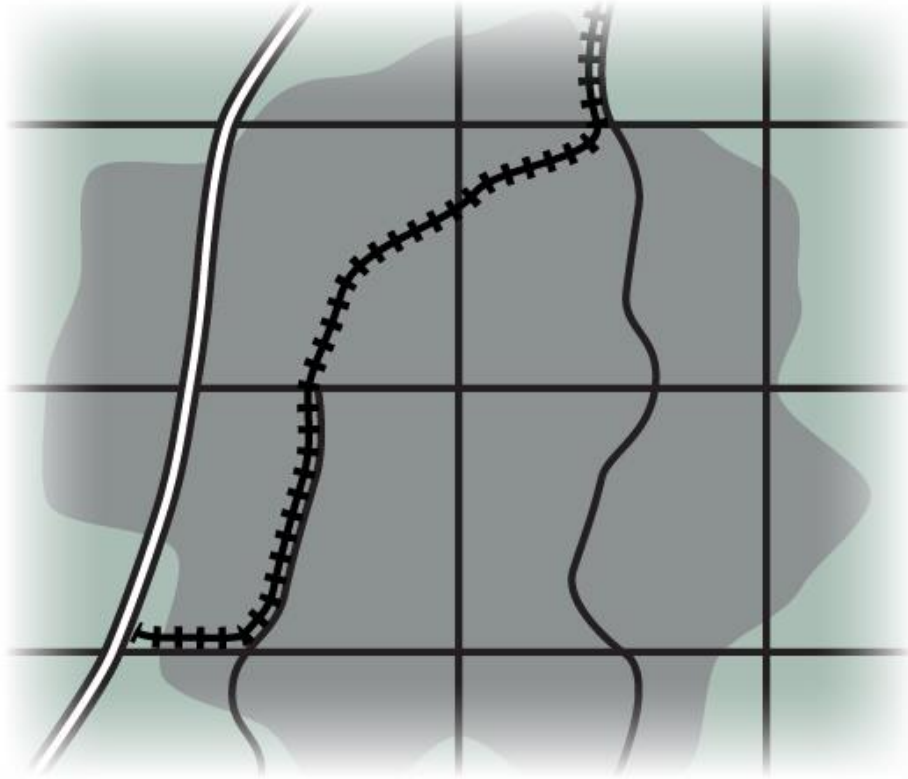
3. Multi-unit housing has lower impacts per person.



Less land per unit = less infrastructure, water, energy use, etc. per person.

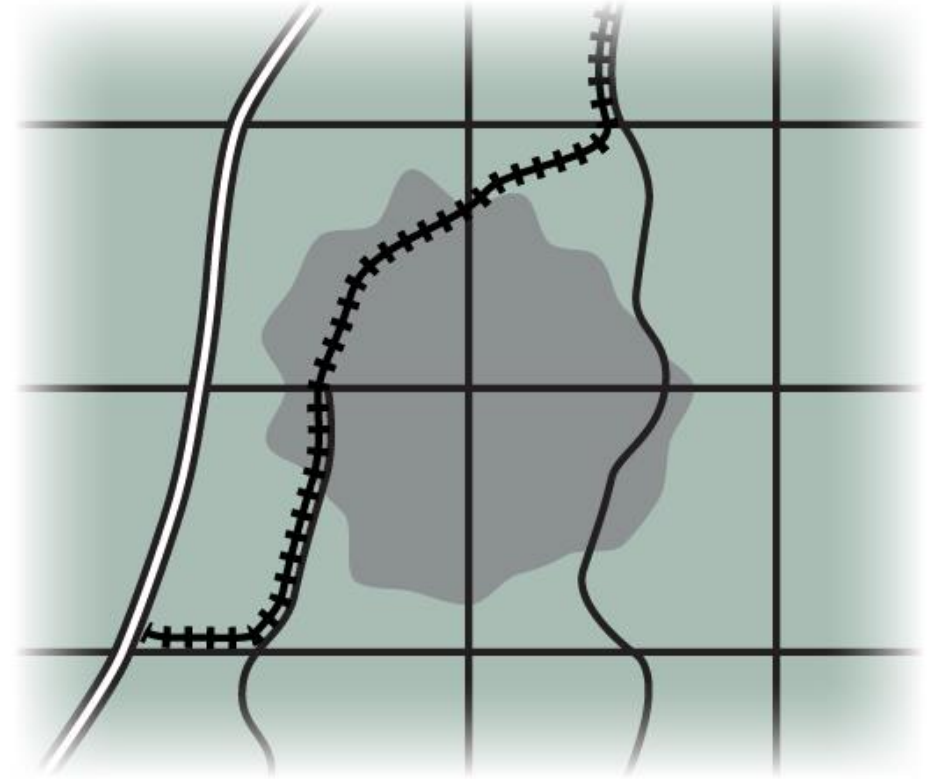
Less overall driving in the region.

# Key Strategy: Preserve Open Space



Current Path

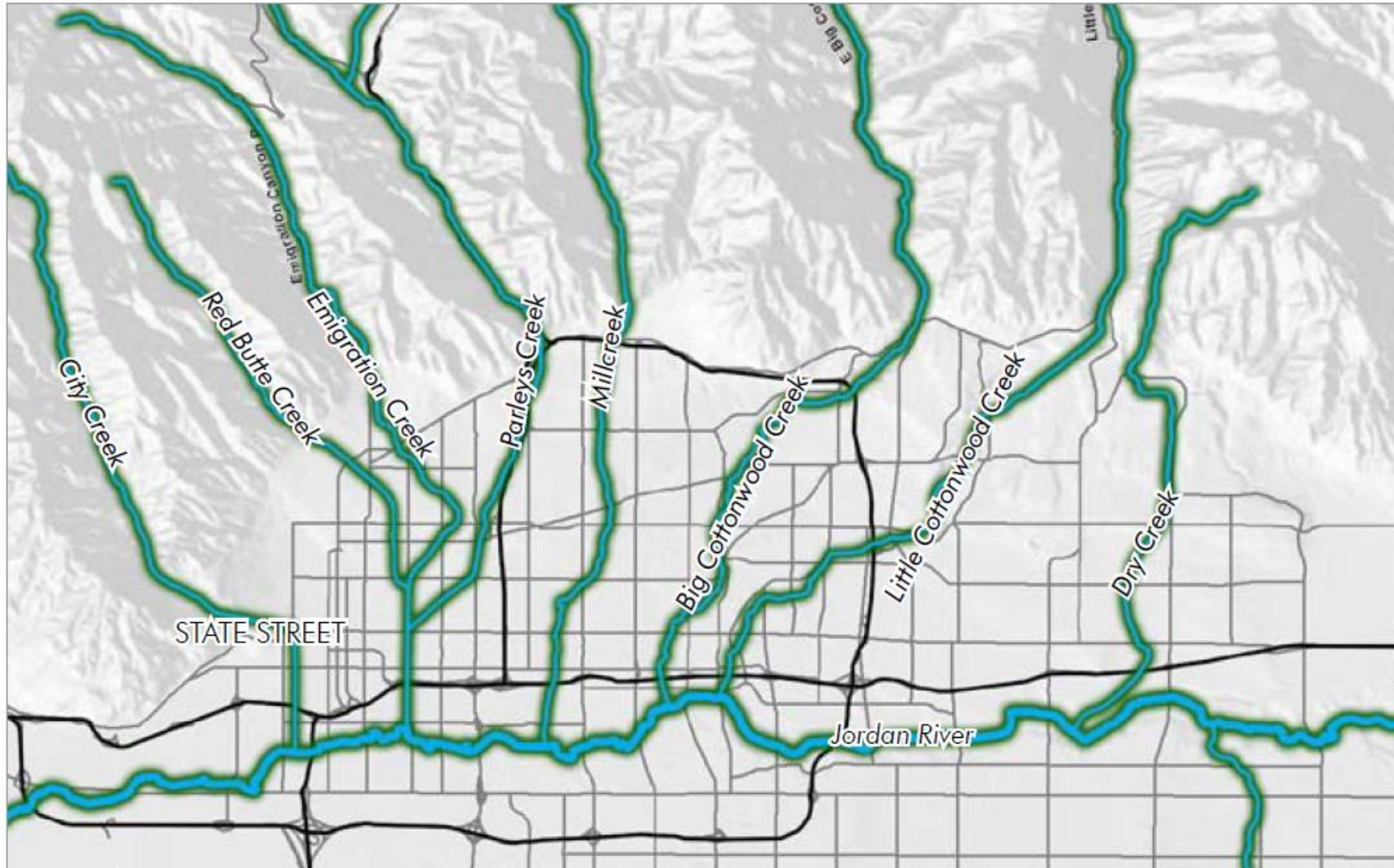
27,400  
Acres  
Saved



Draft Vision



# Key Strategy: Preserve Open Space



# Key Strategies

---



1. Provide Transportation Choices



2. Support Housing Options



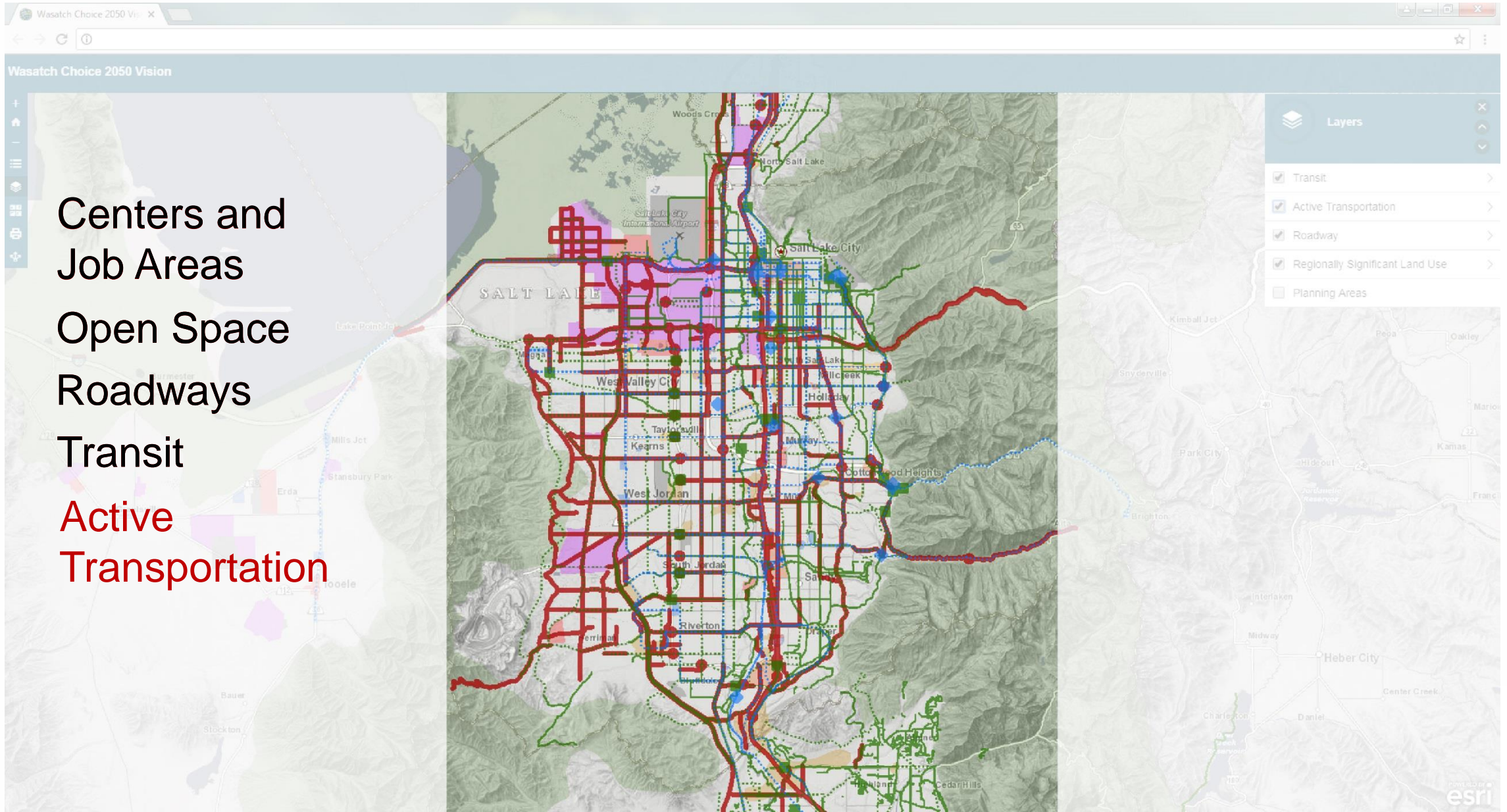
3. Preserve Open Space



4. Link Economic Development with  
Transportation and Housing Decisions



# Wasatch Choice Draft Vision





# Link Economic Development with Transportation and Housing Decisions





# What is a “center?”



Fireclay, Murray



Main Street, Bountiful



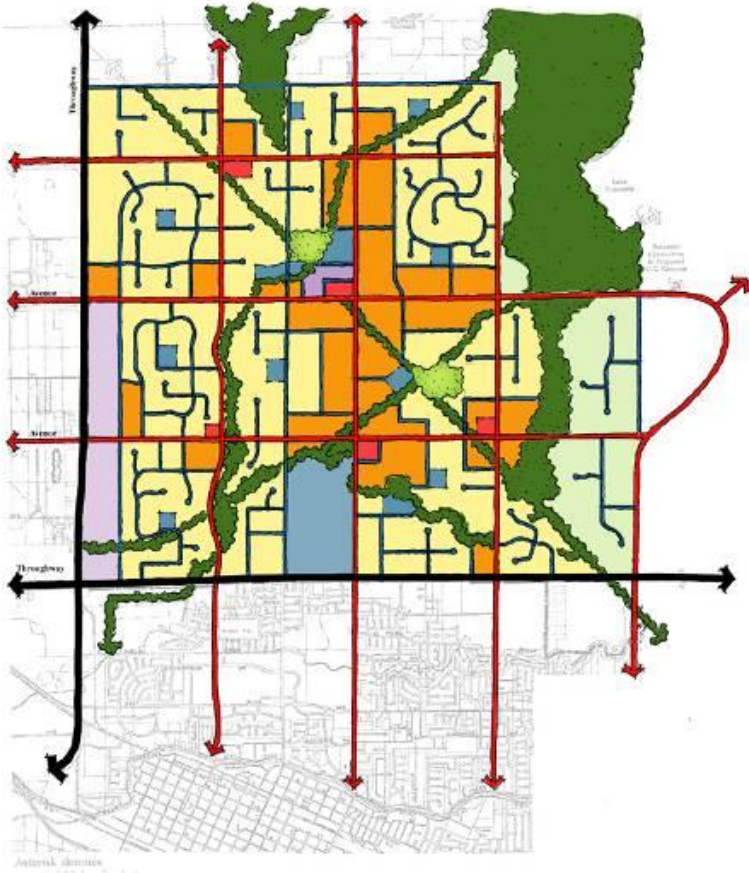
Downtown, Sandy



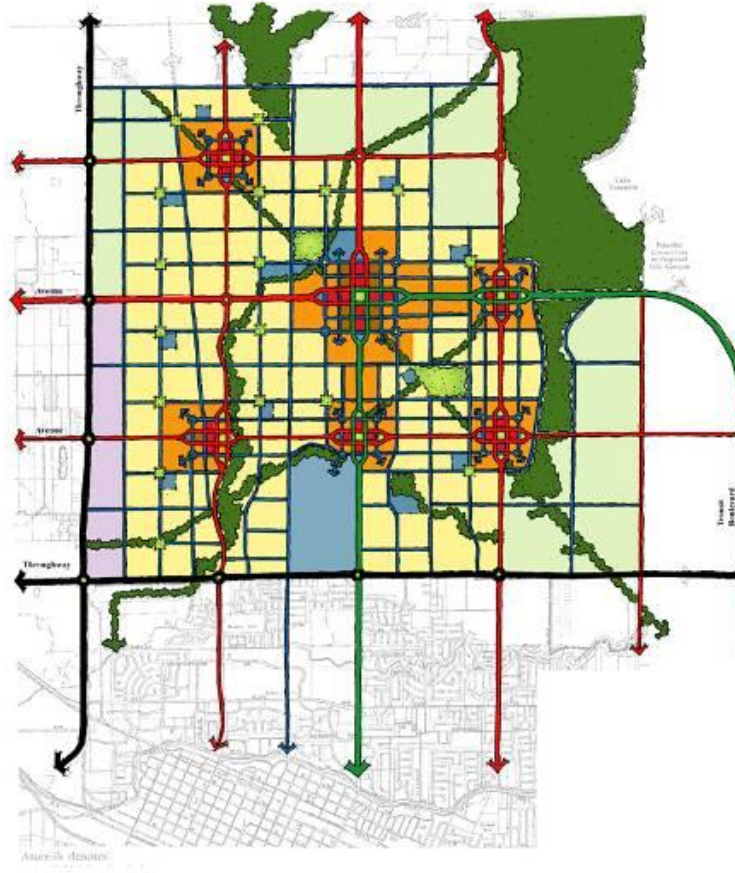
Downtown, Ogden

# Centered Growth: Benefits for Individuals

Less Centered



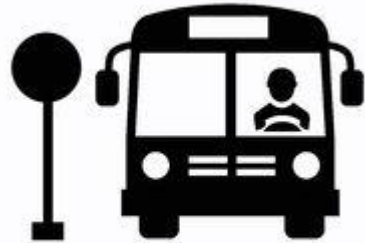
More Centered



- More housing choices
- More people with viable transit, walk, and bike options
- Affordability
- Easier access to jobs and destinations

# What is access to opportunity (ATO)?

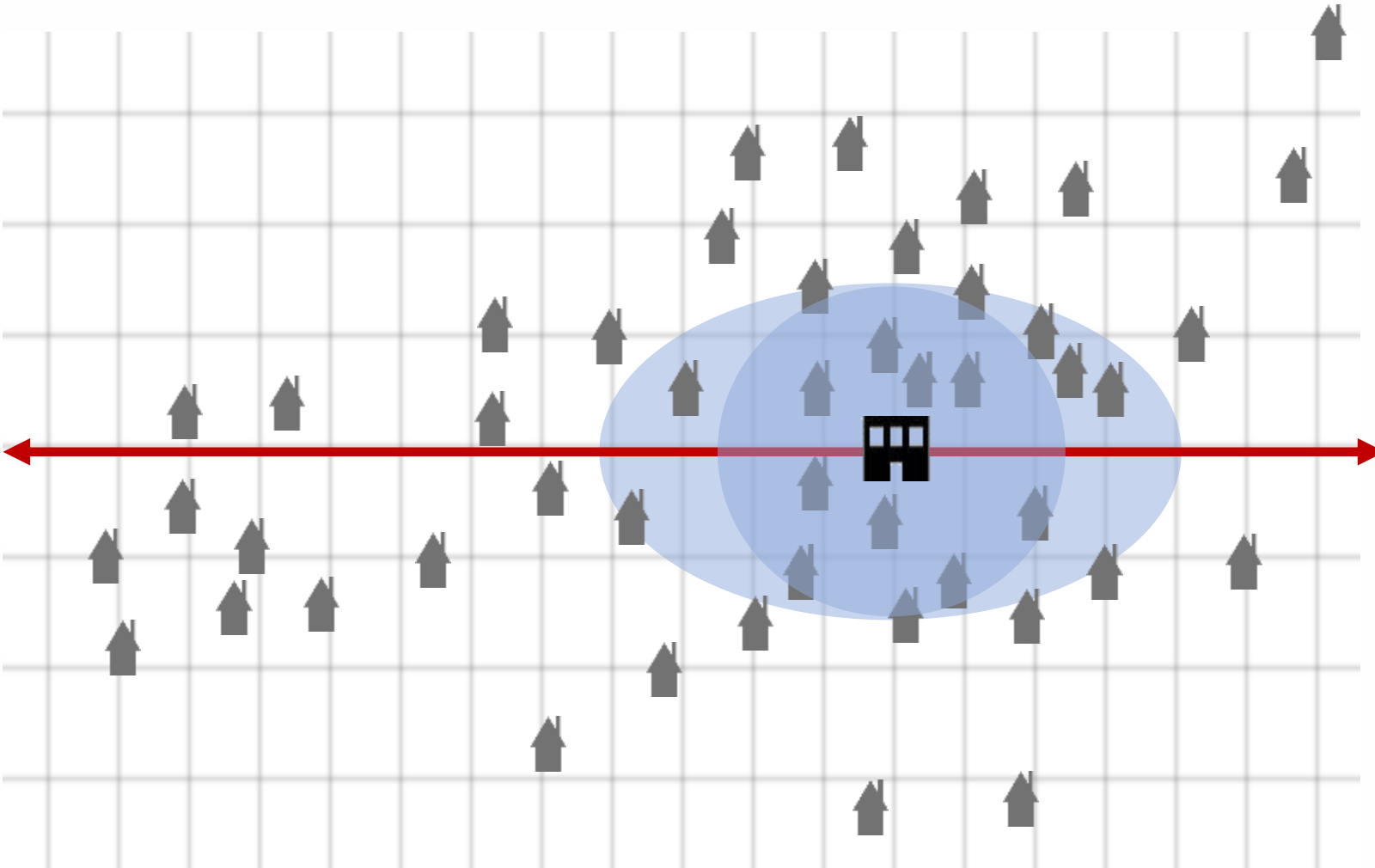
How many valued destinations can be reached in a reasonable period of time?





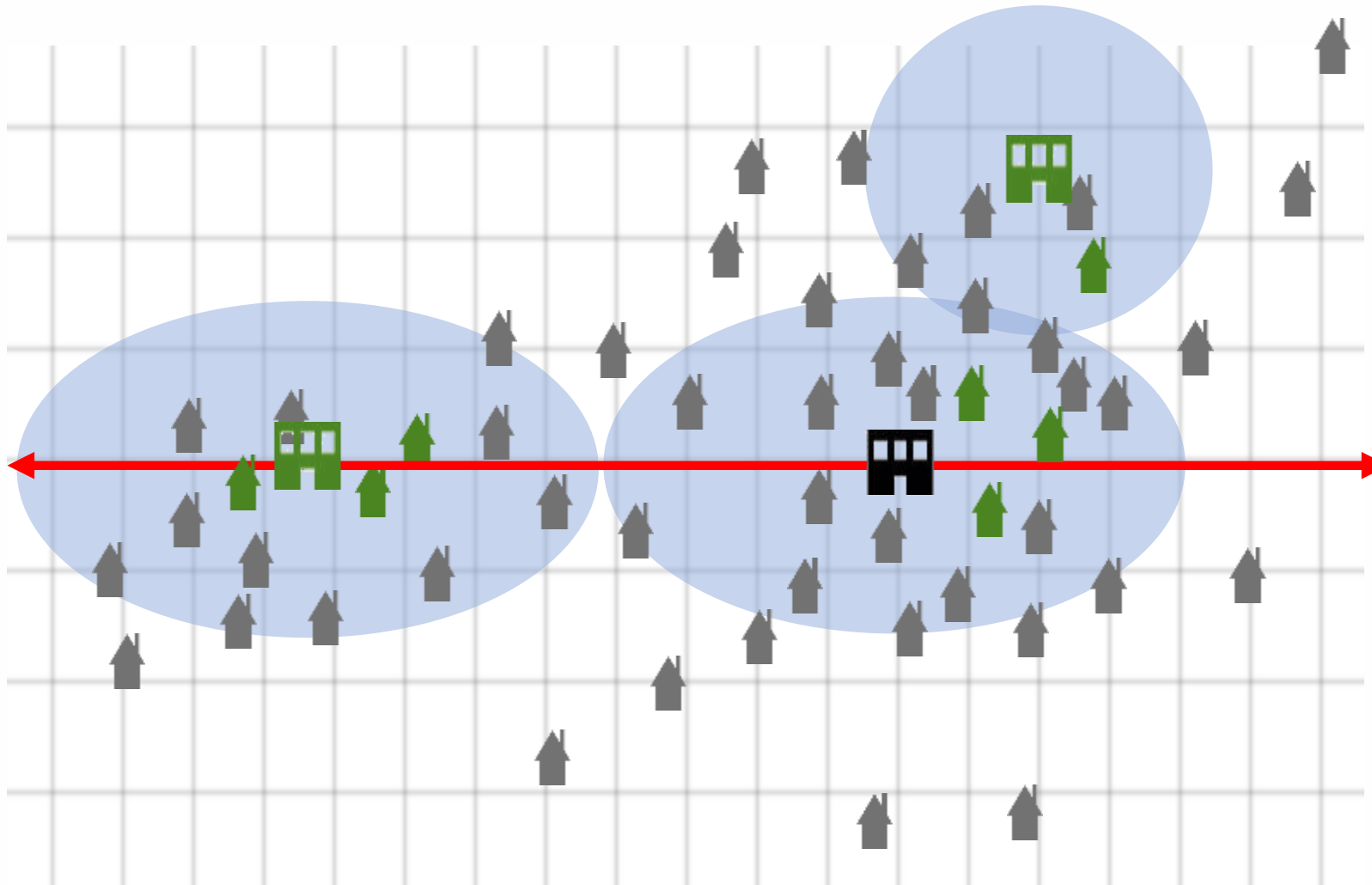
# How do you improve ATO?

**Transportation  
Improvement**



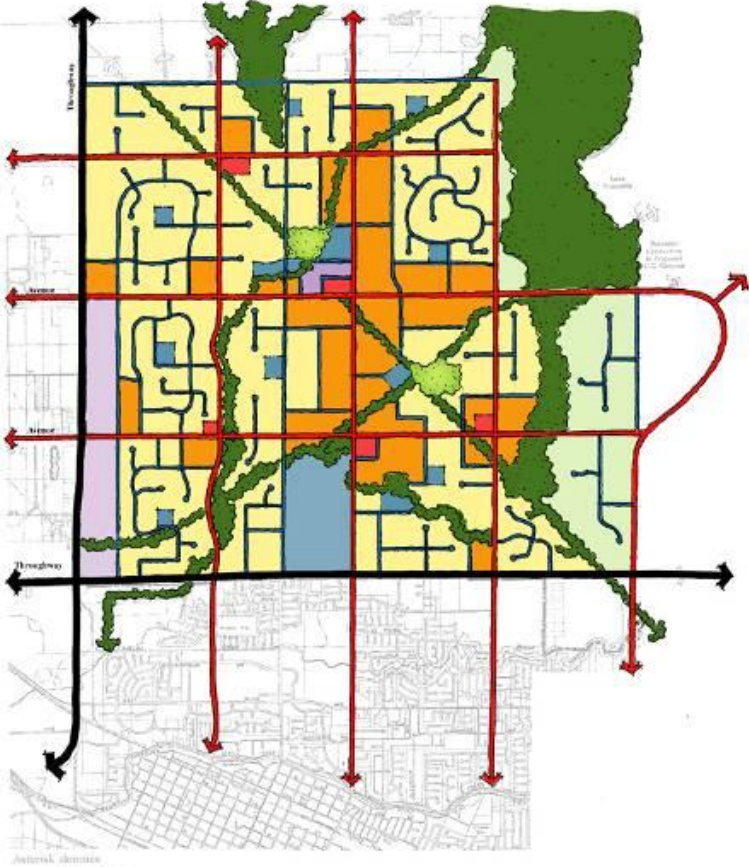
# How do you improve ATO?

**Transportation  
Improvement  
Development  
Decisions**

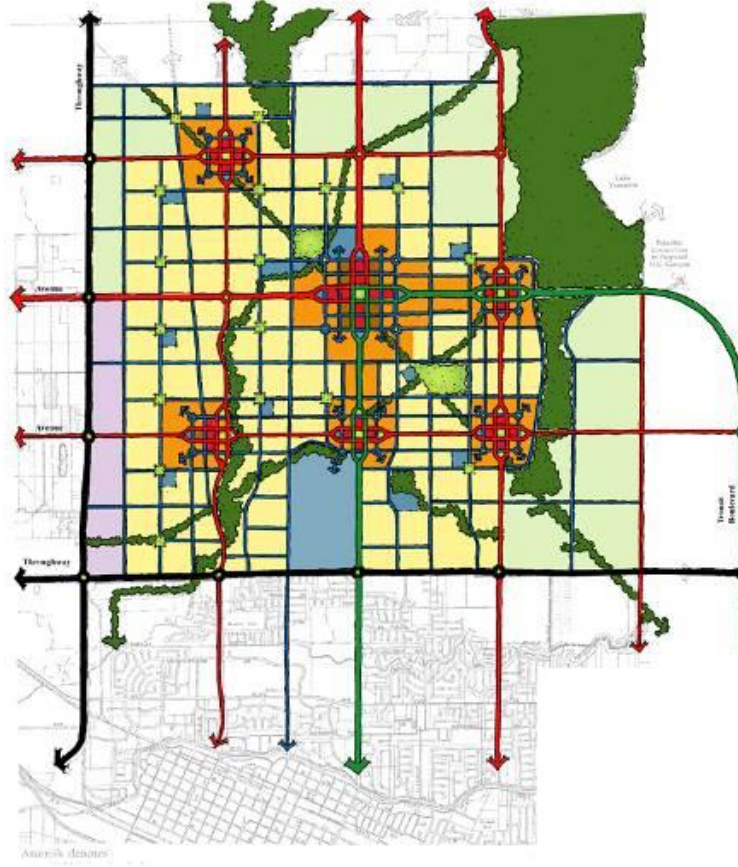


# Centered Growth: Benefits for Communities

Less Centered



More Centered



- More accepted density
- Helps preserve suburban neighborhoods and rural land
- More people near transit and jobs = reduced driving and better air

20% fewer auto trips and  
30% shorter driving distances



# Outcomes

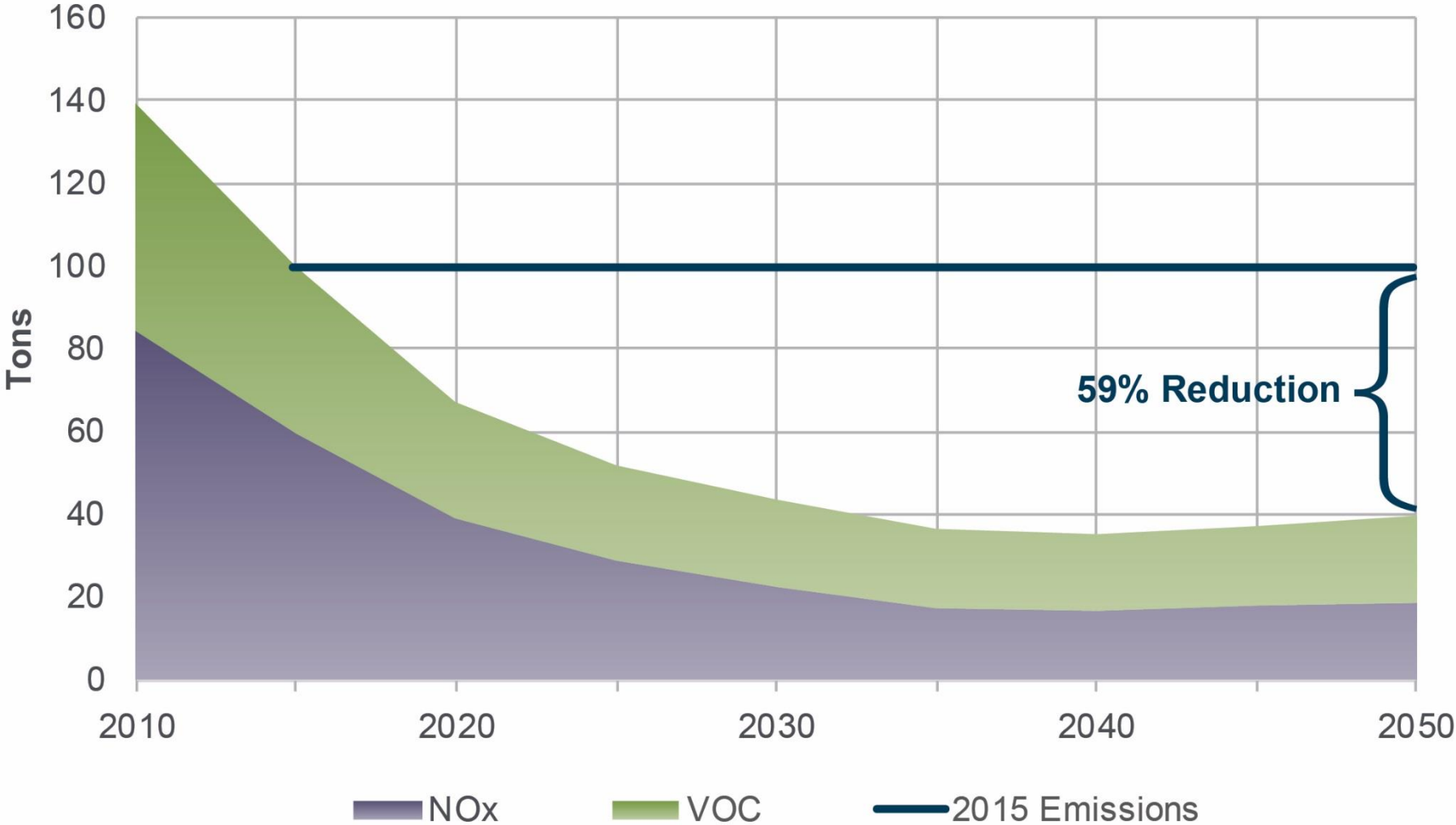


# Outcomes: Better Access to Jobs



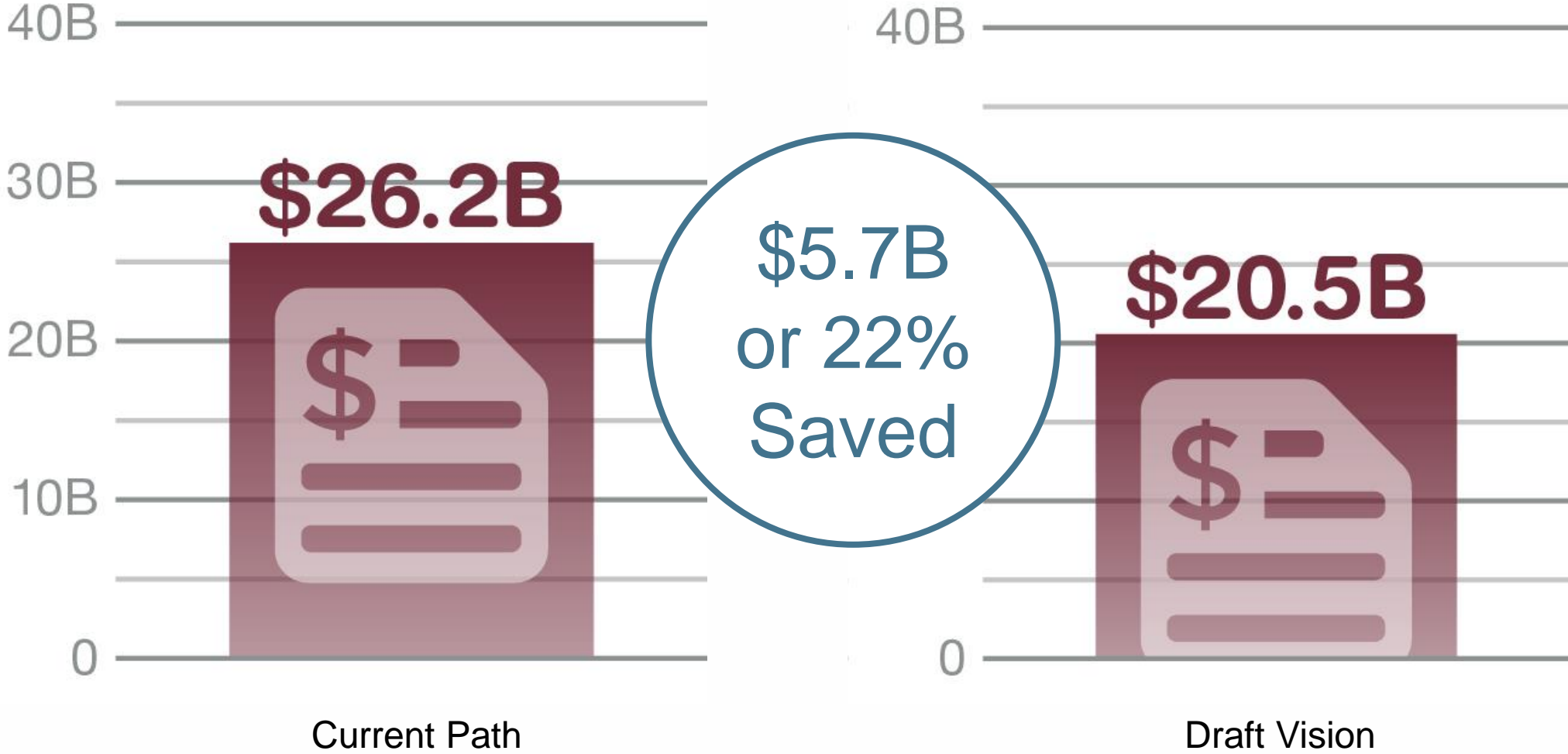
Average Number of Jobs  
Within 30-Minute Trip

# Outcomes: Cleaner Air

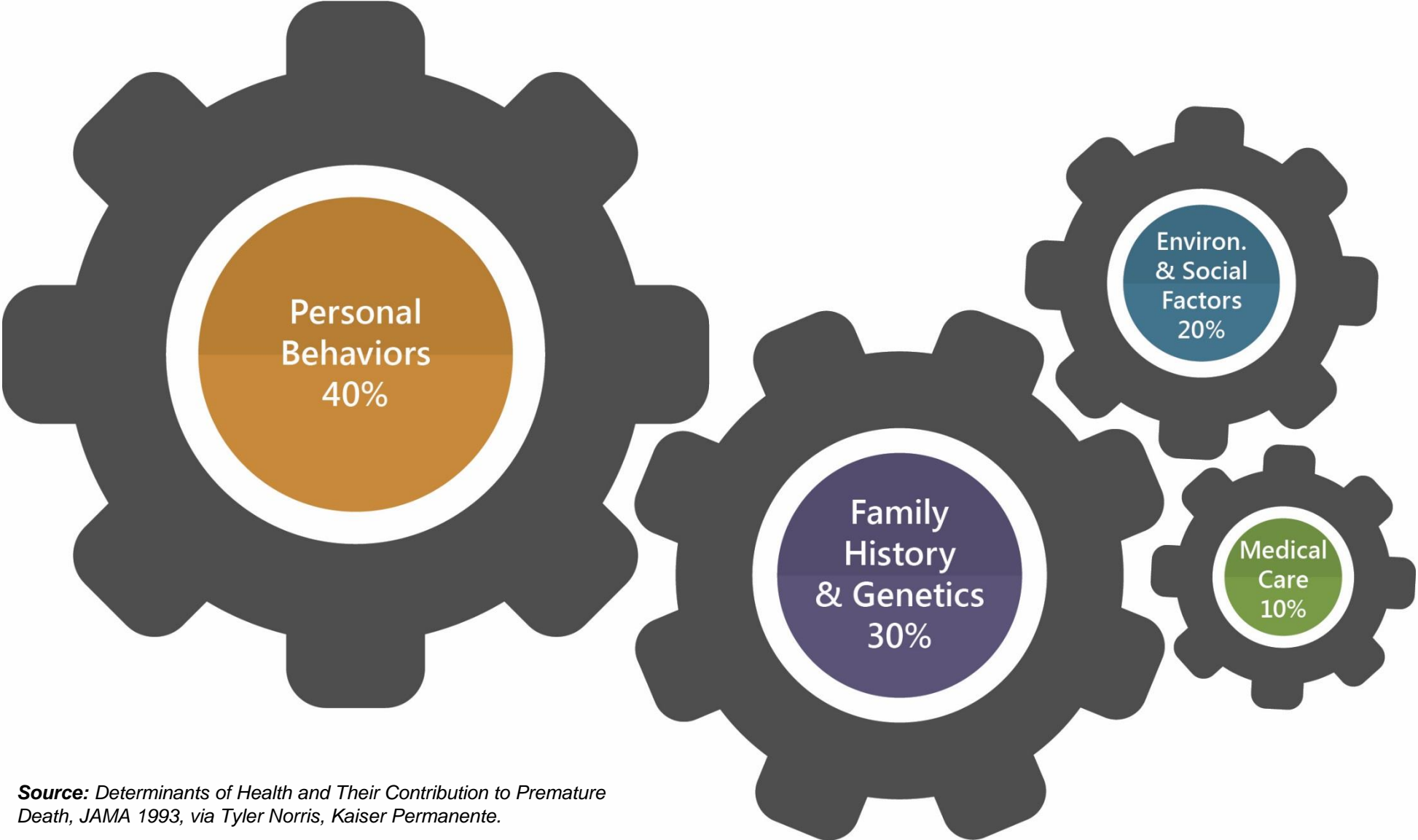




# Outcomes: Local Infrastructure Savings



# Outcomes: Improved Health



*Source: Determinants of Health and Their Contribution to Premature Death, JAMA 1993, via Tyler Norris, Kaiser Permanente.*

# Key Strategies

---



1. Provide Transportation Choices



2. Support Housing Options



3. Preserve Open Space



4. Link Economic Development with  
Transportation and Housing Decisions





# Wasatch Choice 2050 Regional Vision

Salt Lake County Council | July 31, 2018

