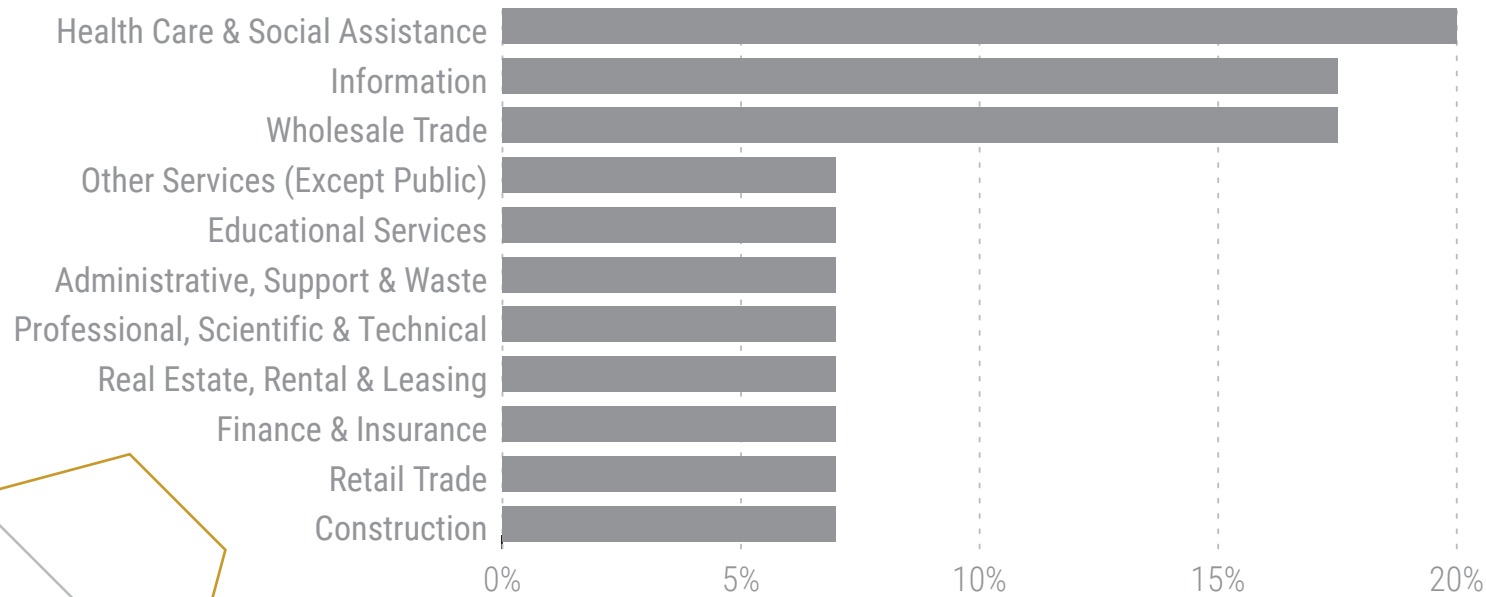


PERCENT OF INDUSTRIES REPRESENTED



INTERVIEW HIGHLIGHTS

“ We want to be a hundred million-dollar company. That’s what we strive for. We talk about it all the time in our management meetings, we talk about it even at our company retreat. ”

“ I think a diverse workforce is crucial in meeting needs, especially in a company like mine that is service-based, all about customer service. We have a better opportunity to identify the needs and concerns of our customers and potential customers. ”

“ Even getting people to show up for interviews is a challenge. We set up interviews and people are no-shows. The rest we can train, but people need to find us. ”

*All remarks were gathered from business decision-makers in your municipality

Salt Lake County

METRO SOLUTIONS

**SOUTH JORDAN
BUSINESS OUTREACH REPORT**

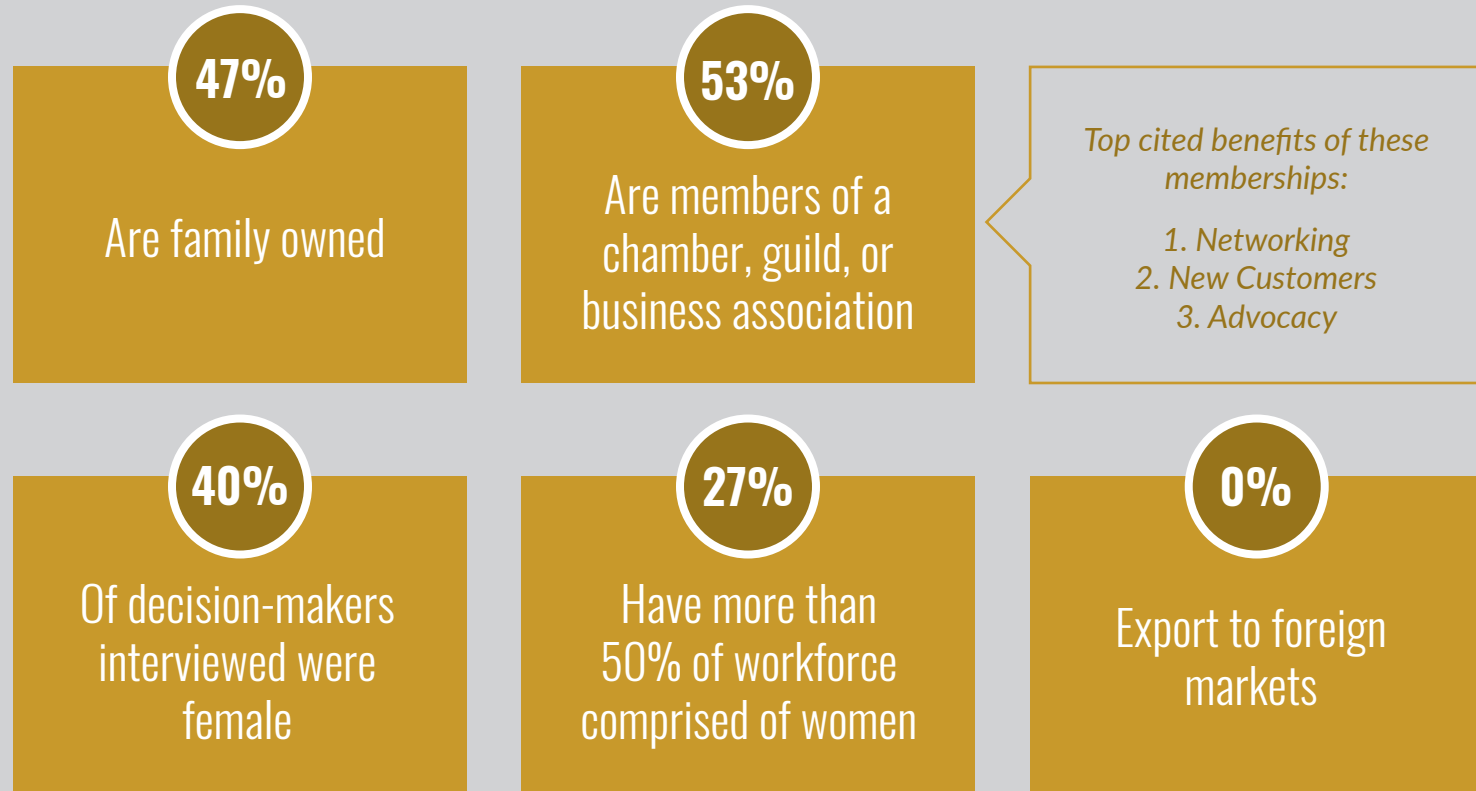


84009 | 84095

Businesses interviewed in the following ZIP codes

OF BUSINESSES INTERVIEWED:

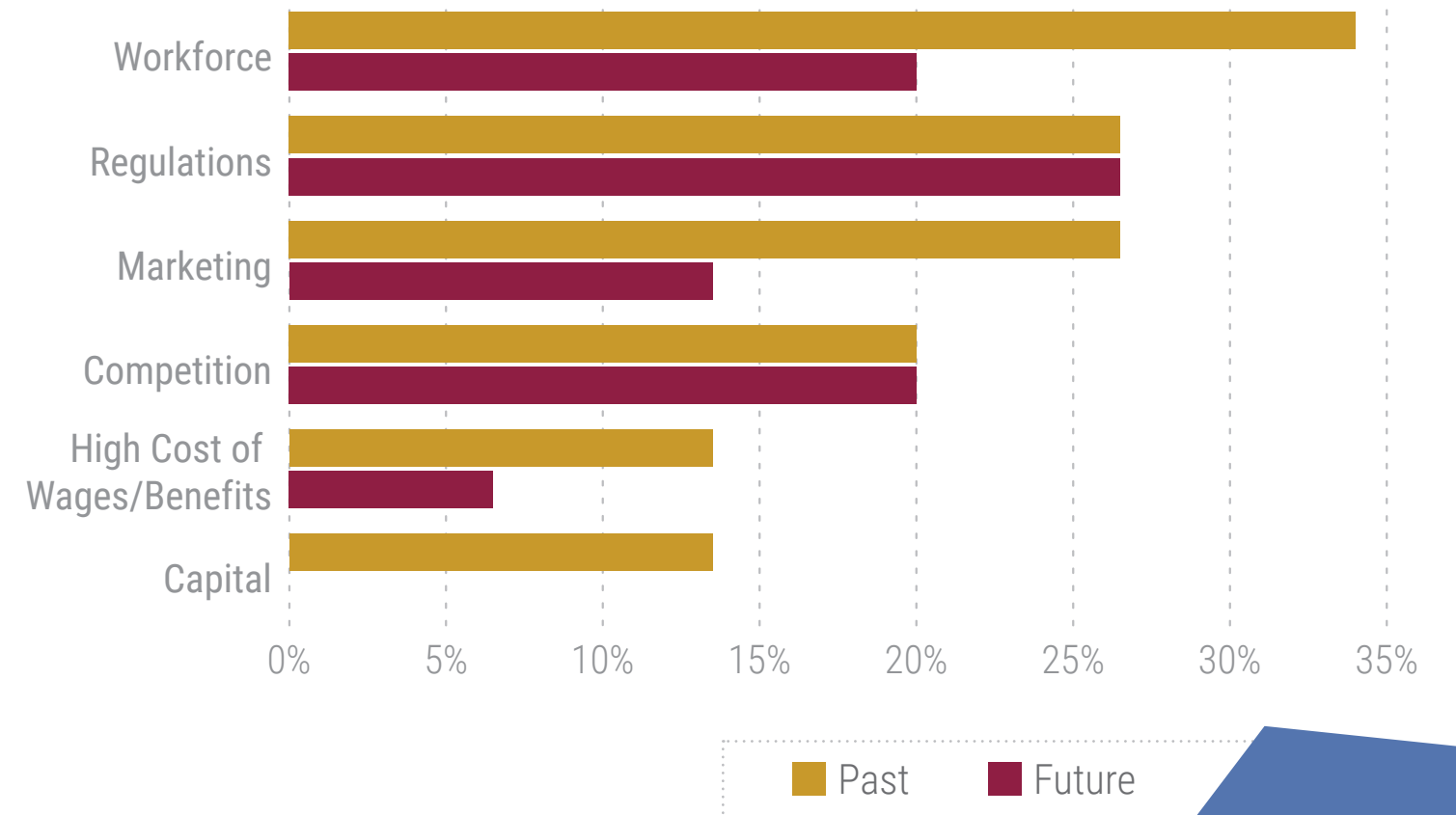
Annual revenues from \$2,000 to \$100,000,000



*Interview data shows when women are in decision-making roles within a business, more women are employed by that business

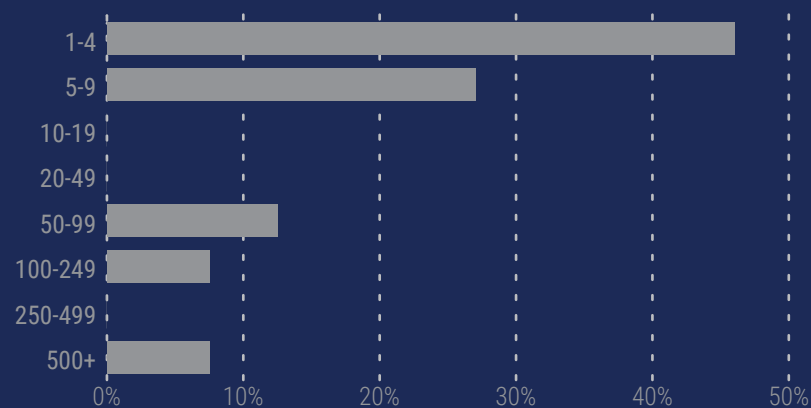
TOP BUSINESS CHALLENGES PAST AND FUTURE

(Percent of Businesses Citing Challenge)

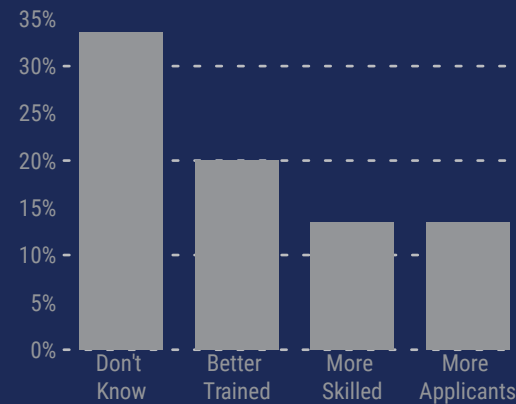


EMPLOYEES & WORKFORCE

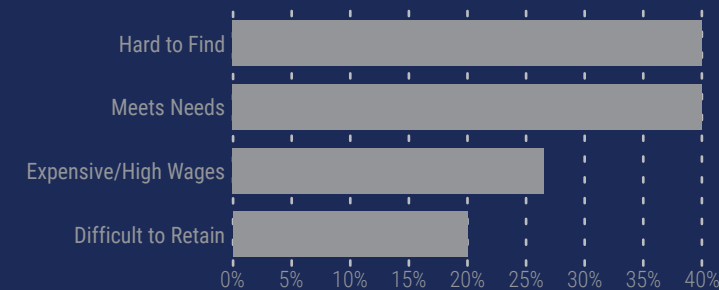
Businesses Interviewed by Employee Count



How could the local workforce better meet your needs?



How does the local workforce fit your company's talent needs?



What challenges do you experience in meeting your workforce needs?

