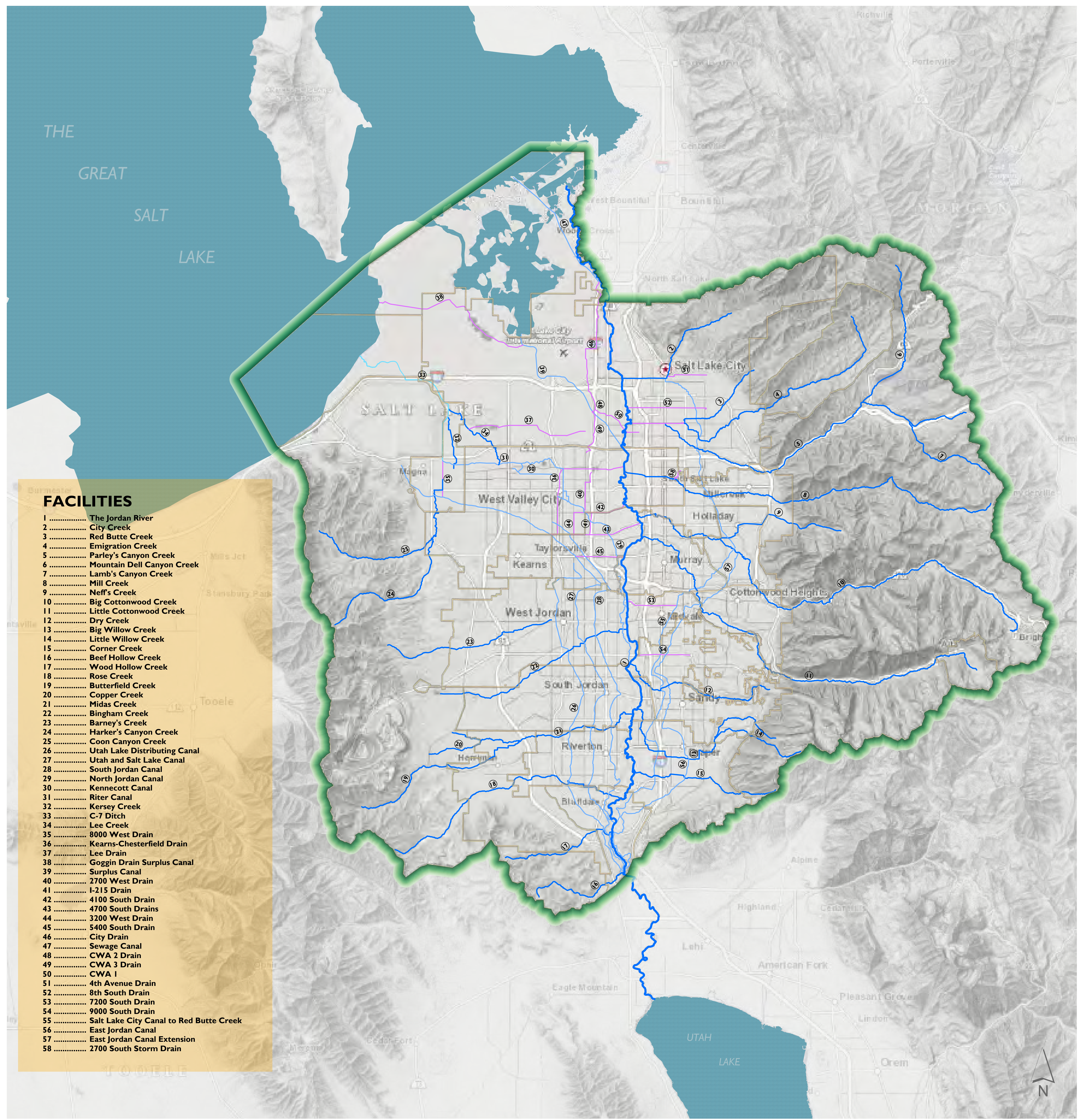


The following facilities, wherever located in the County, including open channel sections and sections in conduit, are declared to be part of the storm drainage and Flood Control System and are subject to the provisions of Chapter 17.08 relating to such facilities. The representation of channels in this figure is based on their designation as a river, creek, canal, ditch or drain. This figure is not a comprehensive representation of County hydrology.

## FLOOD CONTROL



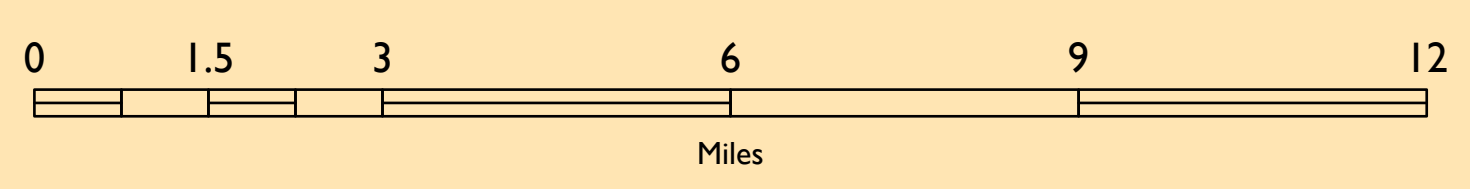
- ### FACILITIES
- 1 ..... The Jordan River
  - 2 ..... City Creek
  - 3 ..... Red Butte Creek
  - 4 ..... Emigration Creek
  - 5 ..... Parley's Canyon Creek
  - 6 ..... Mountain Dell Canyon Creek
  - 7 ..... Lamb's Canyon Creek
  - 8 ..... Mill Creek
  - 9 ..... Neff's Creek
  - 10 ..... Big Cottonwood Creek
  - 11 ..... Little Cottonwood Creek
  - 12 ..... Dry Creek
  - 13 ..... Big Willow Creek
  - 14 ..... Little Willow Creek
  - 15 ..... Corner Creek
  - 16 ..... Beef Hollow Creek
  - 17 ..... Wood Hollow Creek
  - 18 ..... Rose Creek
  - 19 ..... Butterfield Creek
  - 20 ..... Copper Creek
  - 21 ..... Midas Creek
  - 22 ..... Bingham Creek
  - 23 ..... Barney's Creek
  - 24 ..... Harker's Canyon Creek
  - 25 ..... Coon Canyon Creek
  - 26 ..... Utah Lake Distributing Canal
  - 27 ..... Utah and Salt Lake Canal
  - 28 ..... South Jordan Canal
  - 29 ..... North Jordan Canal
  - 30 ..... Kennecott Canal
  - 31 ..... Riter Canal
  - 32 ..... Kersey Creek
  - 33 ..... C-7 Ditch
  - 34 ..... Lee Creek
  - 35 ..... 8000 West Drain
  - 36 ..... Kearns-Chesterfield Drain
  - 37 ..... Lee Drain
  - 38 ..... Goggin Drain Surplus Canal
  - 39 ..... Surplus Canal
  - 40 ..... 2700 West Drain
  - 41 ..... I-215 Drain
  - 42 ..... 4100 South Drain
  - 43 ..... 4700 South Drains
  - 44 ..... 3200 West Drain
  - 45 ..... 5400 South Drain
  - 46 ..... City Drain
  - 47 ..... Sewage Canal
  - 48 ..... CWA 2 Drain
  - 49 ..... CWA 3 Drain
  - 50 ..... CWA 1
  - 51 ..... 4th Avenue Drain
  - 52 ..... 8th South Drain
  - 53 ..... 7200 South Drain
  - 54 ..... 9000 South Drain
  - 55 ..... Salt Lake City Canal to Red Butte Creek
  - 56 ..... East Jordan Canal
  - 57 ..... East Jordan Canal Extension
  - 58 ..... 2700 South Storm Drain








Cartographer: Alex Rudowski  
 North American Datum 1983 (NAD83)  
 NAD 1983 State Plane Utah Central FIPS 4302 (US Feet)  
 Coordinate System  
 Lambert Conformal Conic Projection

This map is not a legal document. Boundaries may be generalized for this map scale. Obtain permission before entering private lands.

Base Map Hill Shade.....Utah AGRC, December 2017  
 Streets.....Salt Lake County, April 2019  
 Hydrology.....Salt Lake County, April 2019  
 County Boundary.....Salt Lake County, March 2019

Map Created on: 4/17/2019 by Salt Lake County Public Works - Flood Control Engineering Division.  
 For additional information, please visit <http://slco.org/flood-control/> or call 385 - 468 - 6600



- ### CHANNEL TYPE
-  Canal
  -  Ditch
  -  Drain
  -  Creek
  -  River
  -  County Boundary
  -  Municipal Boundary