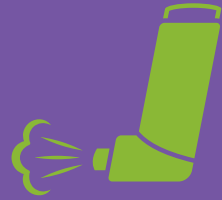


The Challenge

Nearly 9 million families across the nation live in unhealthy, energy inefficient homes that are directly diminishing their quality of life and undermining their ability to meet their full potential. Homes that do not meet basic health and safety standards cost taxpayers billions of dollars annually in preventable housing-related healthcare costs for asthma, lead poisoning and injury, and in turn, lost productivity in the labor force and missed school days for children.

\$82.4 billion is lost annually due to unhealthy and inefficient housing—**3% of total U.S. healthcare costs.**

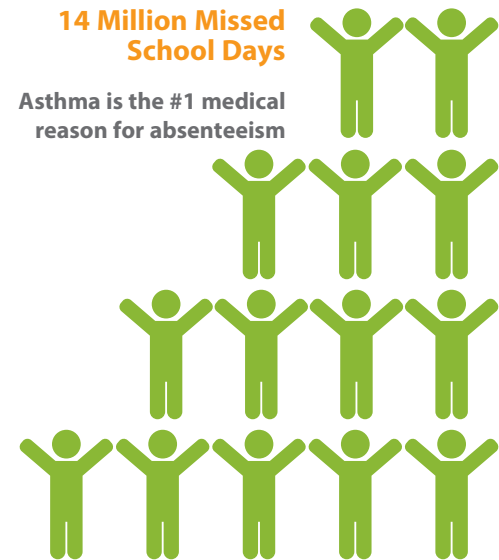
\$43.4 Billion Lead Poisoning **\$20 Billion** Asthma-Related Illness **\$19 Billion** Senior Trip/Fall Injuries



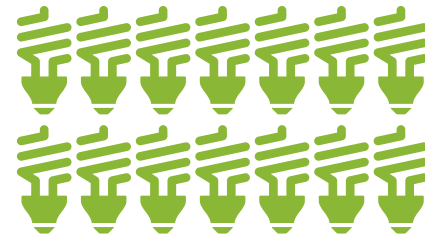
Projected at \$30 billion by 2020

14 Million Missed School Days

Asthma is the #1 medical reason for absenteeism



Low-income households spend 14% of their income on energy



vs.

3.5% for other households



What is the Green & Healthy Homes Initiative?

The Green & Healthy Homes Initiative (GHHI) is dedicated to breaking the link between unhealthy housing and unhealthy families. Formerly the Coalition to End Childhood Lead Poisoning, GHHI replaces stand-alone housing intervention programs with an integrated, whole-house approach that produces sustainable green, healthy and safe homes. Through this model, we are improving health, economic and social outcomes for low income families across the country.

With support from U.S. Department of Housing and Urban Development (HUD), Department of Energy (DOE), Centers for Disease Control and Prevention (CDC), Council on Foundations and numerous philanthropic partners, GHHI serves as the national model for green and healthy homes interventions and has produced more than 5,000 GHHI housing units nationwide.

We are currently accepting applications to expand the Green & Healthy Homes Initiative to new cities, counties and states. Our innovative GHHI service model involves deep collaboration and partnership with communities and is based on best-practices from many years of lessons learned in the field with our sites' communities.

To apply for GHHI designation or to receive more information, contact us at info@ghhi.org or 410.534.6447.

GHHI's impact is growing nationwide with sites in:

Atlanta • Baltimore • Buffalo • Chicago • Cleveland • Denver
Detroit • Dubuque • Flint • Lansing • Lewiston Auburn • Jackson
New Haven • Philadelphia • Rhode Island • Salt Lake • San Antonio

Our goal is to eliminate childhood lead poisoning and ensure all families have access to healthy, safe and energy-efficient housing.



Green & Healthy Homes Initiative®

Breaking the link between unhealthy housing and unhealthy families



www.ghhi.org

One Family's Story

In Baltimore, Ms. Lekquan Young and her 8-year-old son DaWayne lived in a house that was moldy, poorly insulated and did not have a working furnace. Water had leaked into her kitchen floor. The carpet was full of allergens and pulling away from the floorboards. Despite Ms. Young's best efforts, rodents and roaches always found a way back into her home.

Ms. Young's son suffered from asthma—a chronic disease exacerbated by her home's mold, pests and aging carpet. In a single year, Ms. Young had rushed her son to the hospital eight times to manage severe asthma attacks and DaWayne had spent the equivalent of three full weeks in the hospital. Having understood the link between her home and DaWayne's asthma, Ms. Young called GHHI Baltimore to apply for assistance. Just days later, GHHI conducted a comprehensive home assessment. That same month, GHHI installed a new hot water tank and furnace, added insulation, created better ventilation, removed the carpet and eliminated the pests for good. Within weeks of Ms. Young's initial contact to GHHI, she and her son came home to, as she puts it, "a whole new house" that was healthy, energy efficient and safe.

The Young household's monthly energy bills dropped 30%. DaWayne has never been back to the emergency department or hospital for asthma, saving Medicaid an estimated \$48,000 in costs. He takes pride in perfect school attendance and has made the honor roll. Ms. Young no longer misses work and can focus on her job. She was promoted and now has the resources to support a 401K account and a 529 college savings account for her son.

DaWayne has never been back to the emergency department for asthma, saving Medicaid an estimated \$48,000 in costs.

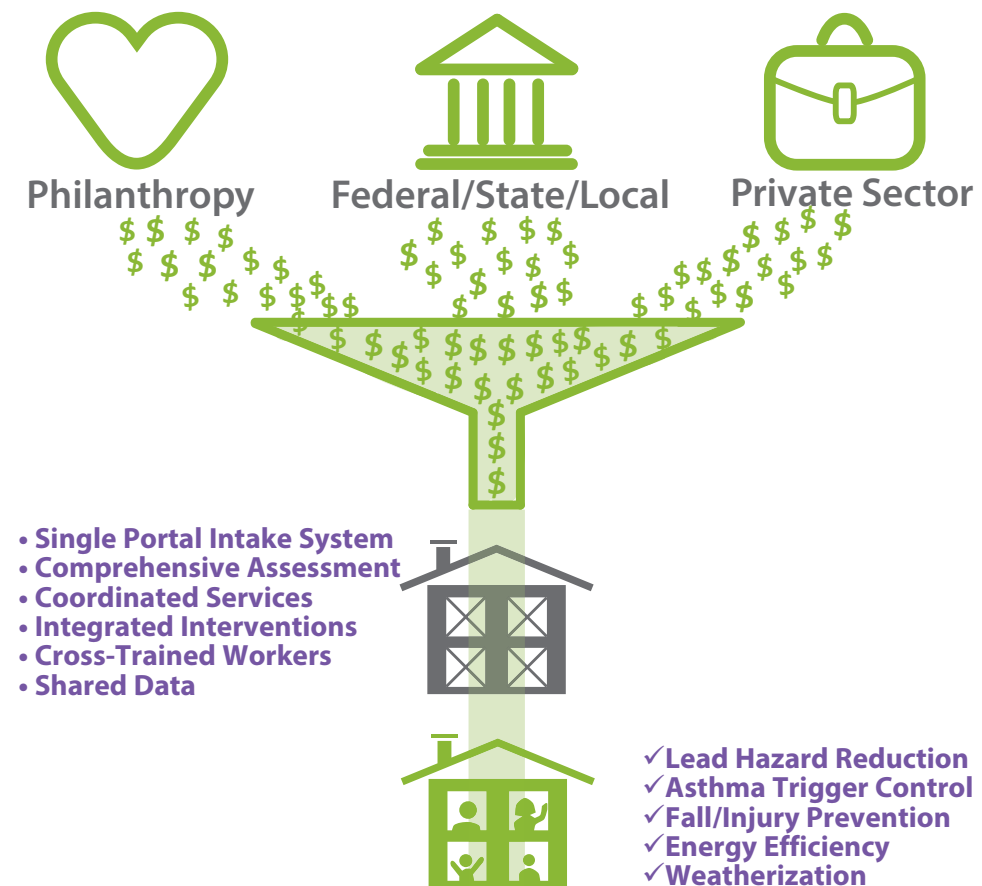


All families have the right to live in a green, healthy and safe home.

Solution: Holistic, Single Stream Delivery Model

GHHI provides a one-stop-shop for families seeking housing intervention programs and related funding, so that clients, like Ms. Young, living in low- to moderate-income households can access expedient and highly effective home repairs. Funding may come from HUD programs, Department of Energy (DOE) programs, Community Development Block Grants (CDBG), foundation support and/or utility companies.

These comprehensive interventions not only stabilize individual homes, but strengthen communities by allowing residents to remain in properties that they would otherwise have to vacate due to hazards in the home and escalating energy consumption costs.



25.7 million Americans have asthma. 40% of their asthma episodes are caused by preventable triggers in the home.



Technical Assistance for GHHI Sites Nationwide

We work directly with state, county and city governments to establish designated GHHI sites and implement the GHHI service model. With years of experience across a wide variety of governance structures and funding sources, we help align existing programs from federal agencies, foundations and private sector entities. We bring together funding streams that support the gamut of home intervention work conducted by city agencies, nonprofits and housing contractors, and coordinate the activities of organizations that provide home services.

Once the GHHI model is operational in a community, housing interventions are performed in concert, rather than individually by siloed agencies and contractors. The results? Governments obtain measurable efficiencies and cost savings, and families reap the benefits of multiple home improvements that boost life changing gains in health, safety and savings.

Services provided to sites implementing the GHHI model include:

- Resource development services
- Innovative financing plan development, including Social Impact Bonds and Pay for Success
- Strategic plans
- Program design
- Client service implementation
- Program boot camps and hands-on-training (e.g. intake, assessment and intervention)
- Development of educational materials and outreach programs
- Customized training
- Legislative policy development

GHHI Public Policy Work

GHHI is recognized as a leader at the local, state and federal levels for its efforts to create green and healthy homes by working with government leaders to enact real, substantive policy changes.

The U.S. Conference of Mayors has twice adopted a resolution supporting GHHI and the goal of expanding the nation's stock of affordable, green, healthy and sustainable housing.

A primary goal of the national policy and program work of GHHI is to inform and support the development of a new national housing standard that will comprehensively overhaul the nation's housing stock in a manner that properly protects the health and safety of all families while also improving energy efficiency.

To do this, GHHI uses both quantitative and qualitative information that is generated from individual sites, aggregated to express scale and translated to inform housing standards and national policy change. GHHI also looks at how the model impacts neighborhood stabilization, wealth creation and family economic stability.