

2018

Salt Lake County
Health Department
Annual Report

2016

2017

2018

AIR QUALITY

NUMBER OF I/M FACILITIES PERMITTED	445	465	484
NUMBER OF TECHS PERMITTED	1,898	2,025	2,074
NUMBER OF VEHICLES TESTED	735,513	744,709	763,885
NUMBER OF VRAP APPLICATIONS	115	116	256
NUMBER OF VRAP VEHICLES REPAIRED	76	88	188
AVERAGE VRAP REPAIR COST	\$652	\$705	\$721
SOLID FUEL BURNING COMPLAINTS AND RESPONSE		109	70
NUMBER OF REPORTED SMOKING VEHICLES		809	1,072
NUMBER OF SMOKING VEHICLE LETTERS ISSUED		567	747

BEWISE

PARTICIPANTS

1,632 1,623 1,127



BUSINESS REGULATION

FACILITIES PERMITTED

BODY ART	117	287	308
COSMETOLOGY	1,462	1,778	1,832
HOTEL/MOTEL	151	159	159
MASSAGE	397	472	429
SCHOOLS	317	315	330
TANNING	53	48	50

FACILITIES INSPECTED

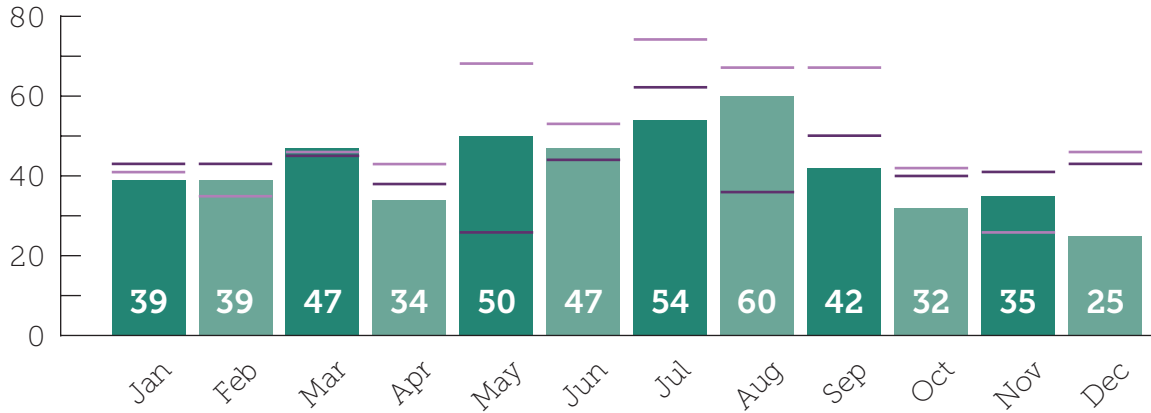
BODY ART	201	198	350
COSMETOLOGY	766	679	947
HOTEL/MOTEL	121	188	168
MASSAGE	396	324	471
SCHOOLS	142	199	243
TANNING	55	44	54

COMPLAINTS RECEIVED

BODY ART	11	16	14
COSMETOLOGY	42	60	79
HOTEL/MOTEL	45	60	36
MASSAGE	11	15	12
SCHOOLS	2	3	5
TANNING	6	2	1

EMERGENCY RESPONSE

EMERGENCY CALLS RECEIVED **608** **511** **504**



EPIDEMIOLOGY TOP 20 INFECTIOUS DISEASES

CHLAMYDIA	5,006	5,370	5,279
GONORRHEA	1,367	1,672	1,913
HEPATITIS C (CHRONIC) <i>2016-2017 CHRONIC & ACUTE COMBINED</i>	1,332	1,109	841
INFLUENZA (HOSPITALIZED)	725	695	830
TUBERCULOSIS (LATENT)	675	571	436
CAMPYLOBACTERIOSIS	176	239	206
HEPATITIS B (CHRONIC)	191	214	179
PERTUSSIS	140	253	164
STREPTOCOCCAL DISEASE (INVASIVE, GROUP A)	137	143	138
SYPHILIS (PRIMARY, SECONDARY, EARLY LATENT)	106	144	131
STREPTOCOCCUS PNEUMONIAE (INVASIVE DISEASE)	113	119	116

EPIDEMIOLOGY

SALMONELLOSIS	131	169	115
HEPATITIS A	4	100	103
GIARDIASIS	72	67	102
STREPTOCOCCAL DISEASE (INVASIVE, GROUP B)	68	81	98
HEPATITIS C (ACUTE)			88
HIV (NEW)	87	81	79
CHICKENPOX	88	95	79
CRYPTOSPORIDIOSIS			53
SHIGA TOXIN-PRODUCING E. COLI	29	42	49
MENINGITIS, ASEPTIC	22	34	47

FOOD PROTECTION

ROUTINE INSPECTIONS	4,925	5,313	6,367
COMPLAINT INVESTIGATIONS	692	594	1,027
PLAN REVIEW APPROVALS	265	234	235
FOODBORNE ILLNESS INVESTIGATIONS	41	62	85
PERMITTED ESTABLISHMENTS	4,374	4,550	4,698
<i>MOBILE ESTABLISHMENTS</i>	211	282	325
TEMPORARY EVENT PERMITS	1,725	1,596	1,623
TEMPORARY EVENT INSPECTIONS	1,530	1,491	1,358
MASS GATHERING PERMITS	170	177	176
MASS GATHERING INSPECTIONS	150	165	151
RESIDENTIAL CHILDCARE INSPECTIONS	215	225	214

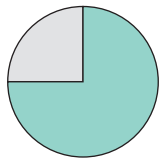
HEALTHY LIVING

ASTHMA

ASTHMA PROGRAM PARTICIPANTS	117	64	48
BEFORE ASTHMA PROGRAM, HAD CONTROLLED ASTHMA	19%	31%	34.4%
AFTER ASTHMA PROGRAM, HAD CONTROLLED ASTHMA	60%	85%	68.8%
ASTHMA PROGRAM AVERAGE REDUCTION IN ER VISITS	77%	80%	72.8%
AVERAGE REDUCTION IN HOSPITALIZATIONS (NEW FOR 2018)			87%

DIABETES PREVENTION

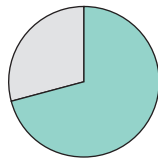
PARTNER AGENCIES HELD **19**
CLASSES FOR **184** PEOPLE



75%
LOW INCOME

25% LOW INCOME

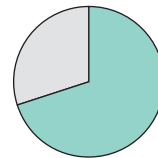
25% LOW INCOME



71%
FEMALE

72% FEMALE

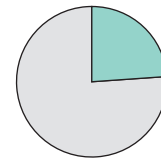
72% FEMALE



70%
HISPANIC

19% HISPANIC

19% HISPANIC



24%
NON-CAUCASIAN

23% NON-CAUCASIAN

23% NON-CAUCASIAN

MEDIAN AGE	53	53	49
COMPLETED PROGRAM	94%	80%	68%
"HIGHLY SATISFIED"	85%	87%	92%
"IMPROVED OVERALL HEALTH"	98%	96%	92%

NUTRITION



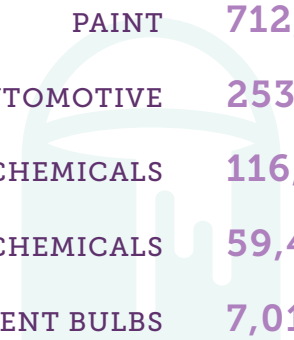
TopSTAR ENDORSED CHILD CARE FACILITIES	5	10	14
FARMER'S MARKETS ACCEPTING FEDERAL/STATE ASSISTANCE VOUCHERS (<i>WIC, SNAP, FMNP</i>)	14	13	16
POUNDS OF FOOD DONATED TO UTAH FOOD BANK FROM HEALTHY FOOD DRIVE	13,334	15,074	18,400

SLCO EMPLOYEE WELLNESS



TOTAL HEALTHY LIFESTYLES PARTICIPANTS	2,367	2,427	2,524
INCREASE IN ENROLLMENT FROM PREVIOUS YEAR	8%	2.5%	4%
TOTAL NEW PARTICIPANTS	160	471	414

HOUSEHOLD HAZARDOUS WASTE (IN LBS)



ELECTRONICS	1,480,114	1,756,029	1,330,320
PAINT	712,220	790,868	756,000
AUTOMOTIVE	253,560	223,974	198,917
OTHER CHEMICALS	116,987	164,964	187,002
YARD CHEMICALS	59,477	64,285	61,840
FLUORESCENT BULBS	7,011	10,605	6,673

HOUSING

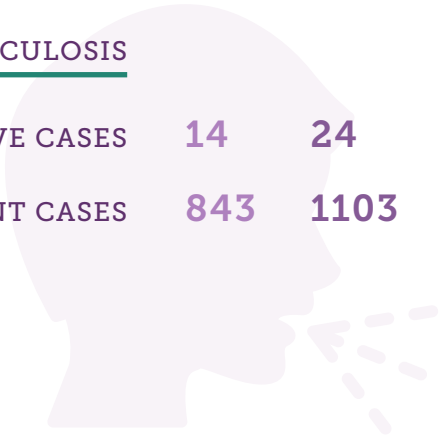
HOUSING COMPLAINTS INVESTIGATED	923	863	721
METH-CONTAMINATED PROPERTIES CLOSED TO ENTRY	387	395	379
DECONTAMINATION PERMITS ISSUED	323	339	332
ENCAMPMENT/DEBRIS COMPLAINTS RECEIVED	913	1,050	1,071
ENCAMPMENT/DEBRIS CLEANUPS	504	641	466
VECTOR CONTROL COMPLAINTS	77	99	117

IMMUNIZATIONS



IMMUNIZATIONS PROVIDED	60,267	63,653	62,187
------------------------	--------	--------	--------

INFECTIOUS DISEASE



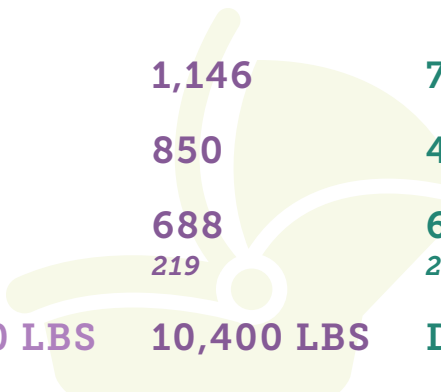
TUBERCULOSIS

ACTIVE CASES	14	24	12
LATENT CASES	843	1103	970

HEPATITIS CASES MANAGED

HEPATITIS A	110
HEPATITIS B	153
HEPATITIS C	215
HEPATITIS E	2
PERINATAL HEPATITIS	62

INJURY PREVENTION



CAR SEAT CHECKS	906	1,146	782
CAR SEATS DISTRIBUTED	668	850	481
RESIDENTS ATTENDING CAR SEAT CLASS	350	688	652
IN SPANISH	129	219	220
CAR SEATS RECYCLED	26,600 LBS	10,400 LBS	DISCONT.

DISCONTINUED DUE TO LIMITATIONS IN THE CURRENT RECYCLING MARKET

NOISE



TEMPORARY NOISE PERMITS ISSUED	102	152	138
NOISE COMPLAINTS RECEIVED	244	193	241

PUBLIC HEALTH NURSING

NURSE-FAMILY PARTNERSHIP CLIENTS	242	233	180
NURSE FAMILY PARTNERSHIP HOME VISITS	4,653	3,320	1,964
PARENTS AS TEACHERS CLIENTS	102	144	151
PARENTS AS TEACHERS HOME VISITS	1,532	1,705	1,831
TARGETED CASE MANAGEMENT HOME VISITS	2,016	4,167	4,040

- 3442 families with infants received education on the importance of placing their infant on its back to sleep. 331 families (9.6%) didn't place their child on their back to sleep prior to the intervention.
- 187 women participating in NFP and PAT were screened for postpartum depression. 20 women screened positive and were referred for mental health services. 18 of the 20 women followed through with the referral and received care.
- 4109 clients received information about proper medication use and dosage, plus a list of medication drop boxes in their geographical location.

STD CLINIC

CHLAMYDIA/GONORRHEA TESTS	2,113	2,229	2,597
SYPHILIS TESTS	1,180	1,154	1,854
OUTREACH TESTS		582	331
HIV TESTS	2,065	1,372	2,170
OUTREACH TESTS	610	645	556
HERPES TESTS	401	471	471
HEPATITIS C TESTS	130	128	134
HEPATITIS B TESTS	49	71	71
CONDOMS DISTRIBUTED	43,492	49,809	40,519

SUBSTANCE USE DISORDER PREVENTION

INDIVIDUALS WHO RECEIVED PREVENTION PROGRAMMING	11,308	11,683	11,571
INDIVIDUALS WHO RECEIVED NALOXONE TRAINING	30+	50+	64

TEEN PREGNANCY PREVENTION

NEW IN 2018

YOUTH/YOUNG ADULTS (AGES 10-20) REACHED WITH COMPREHENSIVE SEX EDUCATION PROGRAMS THROUGH CONTRACTED COMMUNITY PARTNERS	312
YOUTH (AGES 12-18) REACHED WITH ABSTINENCE-BASED SEX EDUCATION THROUGH CONTRACTED COMMUNITY PARTNERS	2,723

TOBACCO PREVENTION

TRAININGS TO HEALTHCARE PROFESSIONALS	41	41	39
INDIVIDUALS PROVIDERS	1,133	809 136	739 201
YOUTH COMPLETED CESSATION PROGRAM	42	49	49
SALES COMPLIANCE CHECKS ~600 TOBACCO RETAILERS	1,650	1,631	1,260
UNDERAGE TOBACCO SALES OBSERVED	119 (7.2%)	124 (7.6%)	73 (5.8%)
MULTI-UNIT HOUSING COMPLAINTS ADDRESSED	13	17	37
UTAH INDOOR CLEAN AIR ACT COMPLAINTS ADDRESSED	60	52	107

VITAL RECORDS

BIRTHS	21,513	20,501	19,833
DEATHS	7,657	7,725	7,800
FETAL DEATHS/STILLBORN	140	140	161
BIRTH CERTIFICATES	23,066	21,162	19,423
DEATH CERTIFICATES	54,042	49,243	52,643
MARRIAGE/DIVORCE ABSTRACTS	820	1,039	1,040
AMENDMENTS/PATERNITIES PROCESSED	762	626	570

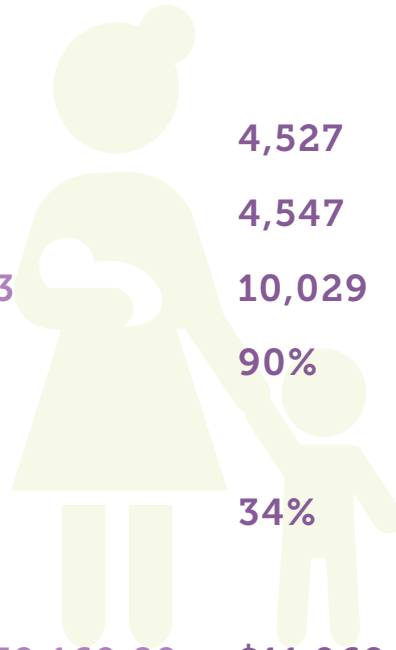
WATER QUALITY

DRINKING WATER SYSTEM INSPECTIONS	19	20	14
DRINKING WATER COMPLAINTS INVESTIGATED	41	36	25
DRINKING WATER SYSTEM CONSULTATIONS			159
DRINKING WATER SAMPLES COLLECTED	494	479	467
SUBDIVISIONS APPROVED	338	327	366
ONSITE WASTEWATER SYSTEMS IN SLCO	7,000	7,000	7,000
ONSITE WASTEWATER SYSTEMS APPROVED	18	25	28
ONSITE WASTEWATER SYSTEMS INSPECTED	19	13	10
SWIMMING POOLS, NEWLY PERMITTED IN 2018	44	50	45
SWIMMING POOLS, NUMBER AS OF 12/31/2018	1,141	1,172	1,222
SWIMMING POOL INSPECTIONS	1,142	1,172	1,960

SWIMMING POOL COMPLAINTS INVESTIGATED	342	498	729
SWIMMING POOLS CLOSED	65 (4.1%)	105 (5.9%)	132 (6.7%)
SWIMMING POOL WATER SAMPLES	6,757	6,382	6,479
SWIMMING POOL WATER SAMPLES FAILED	239 (3.4%)	203 (3.2%)	228 (3.5%)

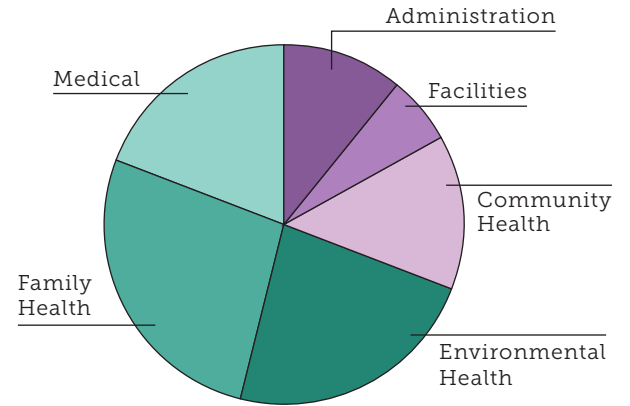
WIC

AVERAGE NUMBER OF WIC CLIENTS RECEIVING SERVICES EACH MONTH	20,521	19,103	17,347
AVERAGE CLINIC VISITS EACH MONTH			
WOMEN	1,696	4,527	4,058
INFANTS	4,796	4,547	4,124
CHILDREN	10,643	10,029	9,165
WOMEN WHO INITIATE BREASTFEEDING IN THE WIC PROGRAM	89%	90%	90%
WOMEN WHO CONTINUE BREASTFEEDING TO SIX MONTHS		34%	33%
FOOD EXPENDITURES	\$12,439,169.89	\$11,962,496.10	\$10,520,149.30

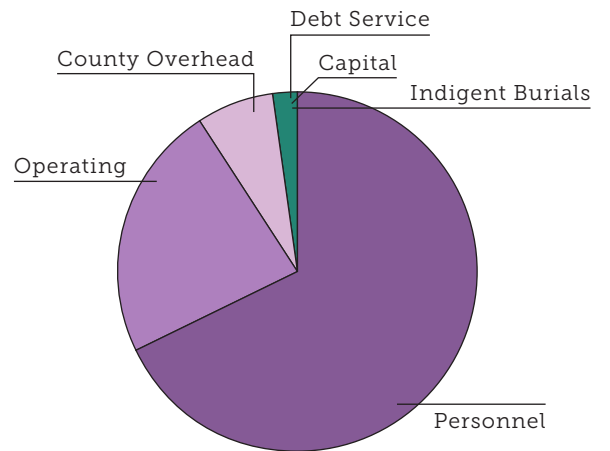


FINANCES

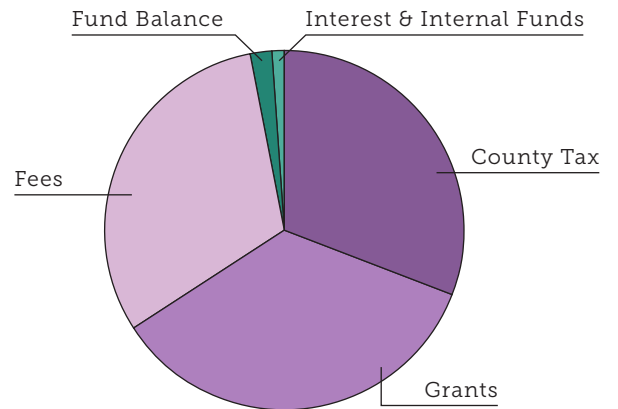
Administration	\$4,687,557	11%
Facilities	\$2,565,233	6%
Community Health	\$6,273,536	14%
Environmental Health	\$9,798,708	23%
Family Health	\$11,565,318	27%
Medical	\$8,397,548	19%
Total	\$43,287,899	100%



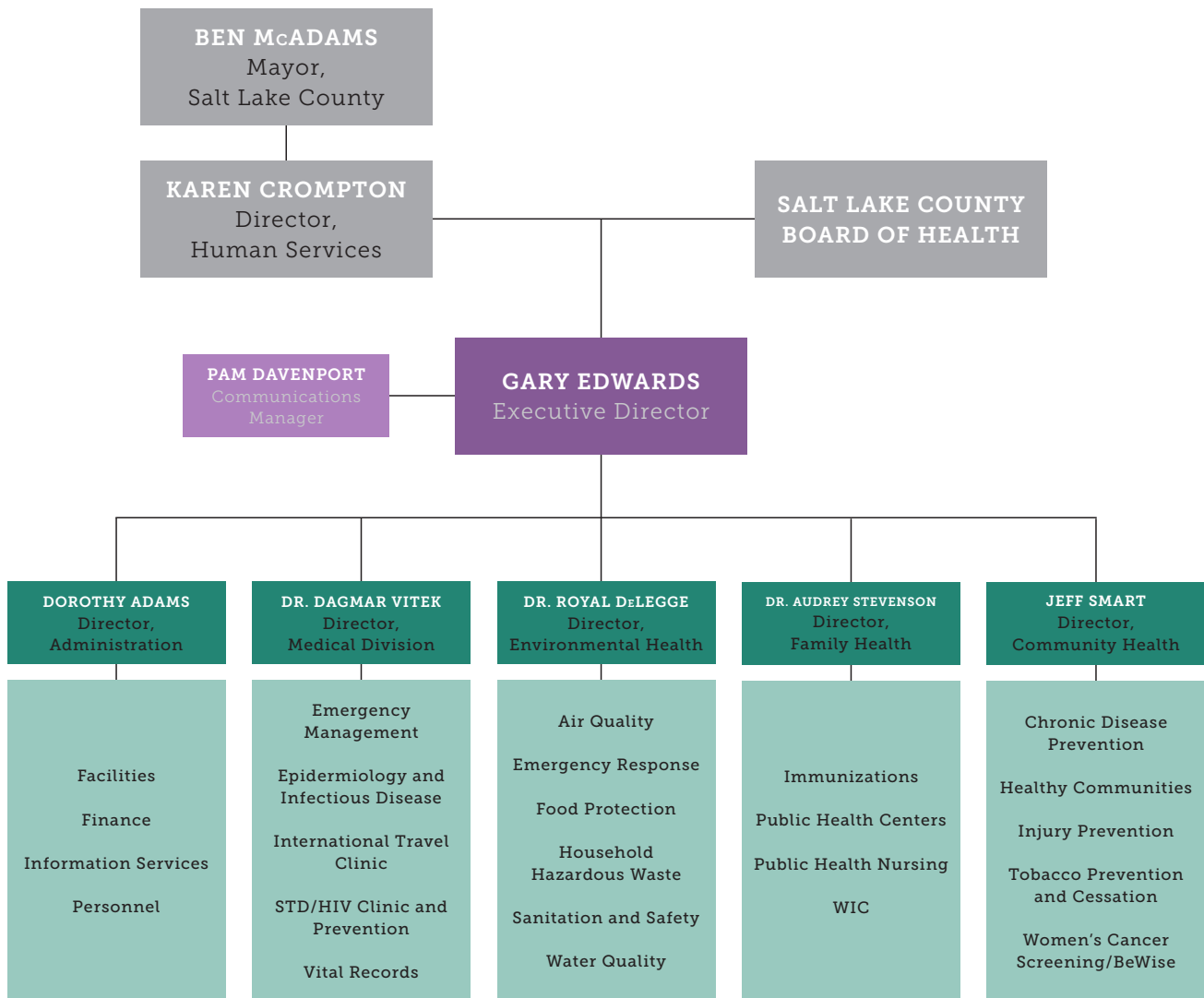
Personnel	\$29,200,115	68%
Operating	\$9,782,262	23%
County Overhead	\$2,844,055	7%
Debt Service	\$1,226,454	2%
Indigent Burials	\$129,775	0%
Capital	\$105,238	0%
Total	\$43,287,899	100%



County Tax	\$13,378,231	31%
Grants	\$15,273,677	35%
Fees	\$13,401,385	31%
Fund Balance	\$952,671	2%
Interest	\$265,353	1%
Internal Funds	\$16,582	0%
Total	\$43,287,899	100%



ORGANIZATION

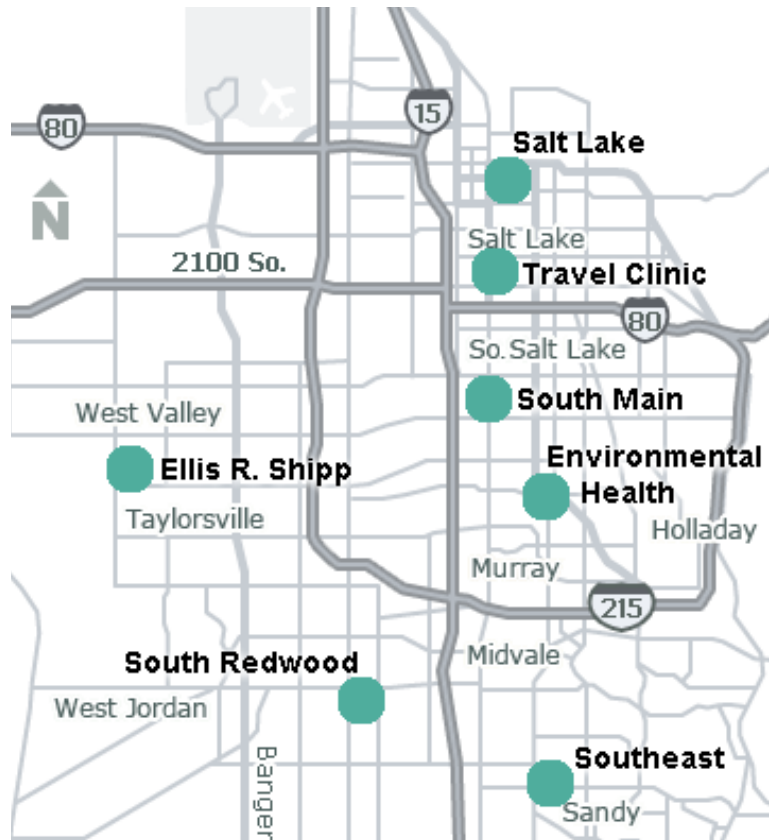


BOARD OF HEALTH

Russell Booth, 2nd Vice Chair
 Councilmember Arlyn Bradshaw
 Scott Brown
 Kelly Christensen
 Clare Coonan, Chair
 Dr. William Cosgrove, 1st Vice Chair
 Judy Cullen
 Mayor Robert Dahle

Brooke Hashimoto
 Chris Hemmersmeier
 Roderic Land
 Lavanya Mahate
 Leticia Medina
 Dr. Ruedi Tillmann
 Dr. Dorothea Verbrugge

FACILITIES



**ELLIS R. SHIPP
PUBLIC HEALTH CENTER**
4535 South 5600 West
West Valley City

ENVIRONMENTAL HEALTH
788 East Woodoak Lane
Murray

**SALT LAKE
PUBLIC HEALTH CENTER**
610 South 200 East
Salt Lake City

**SOUTH MAIN
PUBLIC HEALTH CENTER**
3690 South Main Street
South Salt Lake

**SOUTHEAST
PUBLIC HEALTH CENTER**
9340 South 700 East
Sandy

TRAVEL CLINIC
2001 South State Street
Suite S2400
Salt Lake City

**SOUTH REDWOOD
PUBLIC HEALTH CENTER**
7971 South 1825 West
West Jordan