

SOUTHEAST PLANNING DISTRICT

Community Interest and Opinion Survey: Let your voice be heard today!

Salt Lake County Parks & Recreation would like your input to help determine recreational facilities, park, open space, and program priorities for our community. This survey will take approximately 15 minutes to complete. When you are finished, please return your survey in the postage-paid, return-reply envelope. We greatly appreciate your help.

First, we would like to know your opinions on Salt Lake County parks.

Q-1 Have you or members of your household visited Salt Lake County parks during the past year? (Circle your answer.)

N=279 90% YES
 10% NO (SKIP TO QUESTION Q-3.)

Q-2 If YES, how would you rate the physical conditions overall for parks you visited? (Circle answer.)

N=248 30% EXCELLENT
 66% GOOD
 4% FAIR
 POOR

Q-3 Are there parks within 10-15 minutes walking distance of your residence? (Circle answer.)

N=280 74% YES
 26% NO

Q-4 How do you travel to parks and recreation facilities? (Circle all that apply.)

N=280 1% I DO NOT TRAVEL TO PARKS AND RECREATION FACILITIES
 89% CAR
 28% BIKE
 57% WALK
 1% PUBLIC TRANSPORTATION
 OTHER (Please list _____)

Q-5 Listed below are some park amenities. Please indicate whether you feel that each amenity should NOT be a priority, should be given a LOW priority, MEDIUM priority, or HIGH priority in Salt Lake County parks.

Amenity number	Park Amenity	How much priority, if any, should each amenity have in Salt Lake County parks? (Please circle your answer.)			
N=276 1	Lawn area, open un-programmed	1% NOT	3% LOW	34% MEDIUM	62% HIGH
N=279 2	Group pavilion/picnic area.	1% NOT	7% LOW	40% MEDIUM	52% HIGH
N=280 3	Children’s playground (traditional)	1% NOT	6% LOW	22% MEDIUM	71% HIGH
N=280 4	Children’s playground (nature, etc.)	2% NOT	12% LOW	40% MEDIUM	46% HIGH
N=277 5	Horseshoe pit.	25% NOT	54% LOW	18% MEDIUM	3% HIGH
N=279 6	Skate park.	11% NOT	41% LOW	35% MEDIUM	13% HIGH
N=281 7	Fishing pond.	21% NOT	42% LOW	28% MEDIUM	9% HIGH
N=276 8	Disc golf course.	20% NOT	50% LOW	24% MEDIUM	5% HIGH
N=279 9	Off-leash dog park, fenced.	17% NOT	26% LOW	33% MEDIUM	24% HIGH
N=278 10	Off-leash dog park, not fenced.	38% NOT	33% LOW	16% MEDIUM	13% HIGH
N=275 11	Access to facilities for the disabled.	2% NOT	12% LOW	34% MEDIUM	52% HIGH
N=48 12	Other _____	6% NOT	2% LOW	13% MEDIUM	79% HIGH

Q-6 Of the amenities listed in Q-5, which do you feel are most important to your household? (Please write the amenity number from Q-5 in the appropriate box.)

Most important N=269

30% Lawn area, open and un-programmed
 35% Children’s playground (traditional)
 12% Group pavilion/picnic area

Second most important N=268

20% Lawn area, open and un-programmed
 19% Children’s playground (traditional)
 19% Group pavilion/picnic area

Third most important N=264

23% Lawn area, open and un-programmed
 23% Group pavilion/picnic area
 14% Children’s playground (traditional)

Q-7 Listed below are some sports amenities. Please indicate whether you feel that each amenity should NOT be a priority, should be given a LOW priority, MEDIUM priority, or HIGH priority in Salt Lake County.

Amenity number	Sports Amenity	How much priority, if any, should each sport amenity have in Salt Lake County? (Please circle your answer.)			
N=275	1 Soccer / Football / Rugby field.	4% NOT	9% LOW	41% MEDIUM	46% HIGH
N=274	2 Lacrosse / Field hockey field	9% NOT	37% LOW	41% MEDIUM	13% HIGH
N=271	3 Little league baseball diamond	4% NOT	14% LOW	44% MEDIUM	38% HIGH
N=274	4 Babe Ruth baseball diamond.	6% NOT	27% LOW	46% MEDIUM	21% HIGH
N=276	5 Softball diamond.	4% NOT	18% LOW	52% MEDIUM	26% HIGH
N=270	6 Backstop, for pickup baseball games . . .	6% NOT	24% LOW	49% MEDIUM	21% HIGH
N=274	7 Basketball court, outdoor	3% NOT	11% LOW	49% MEDIUM	37% HIGH
N=274	8 Sand volleyball court.	5% NOT	29% LOW	47% MEDIUM	19% HIGH
N=275	9 Tennis court, outdoor	5% NOT	22% LOW	47% MEDIUM	26% HIGH
N=272	10 Golf course.	26% NOT	35% LOW	24% MEDIUM	15% HIGH
N=21	11 Other _____	33% NOT	LOW	14% MEDIUM	53% HIGH

Q-8 Of the amenities listed in Q-7, which do you feel are most important to your household? (Please write the amenity number from Q-7 in the appropriate box.)

Most important N=250
 42% Soccer/Football/Rugby field
 13% Little league baseball diamond
 9% Basketball court, outdoor

Second most important N=246
 17% Little league baseball diamond
 16% Basketball court, outdoor
 15% Soccer/Football/Rugby field

Third most important N=241
 19% Basketball court, outdoor
 16% Little league baseball diamond
 14% Tennis court, outdoor

Q-9 Listed below are some more recreation amenities. Please indicate whether you feel that each amenity should NOT be a priority, should be given a LOW priority, MEDIUM priority, or HIGH priority in Salt Lake County.

Amenity number	Recreation Amenity	How much priority, if any, should each amenity have in Salt Lake County? (Please circle your answer.)			
N=279	1 Trail, walking/running/bike.	1% NOT	3% LOW	14% MEDIUM	82% HIGH
N=274	2 Trail, horse, equestrian	11% NOT	52% LOW	29% MEDIUM	8% HIGH
N=277	3 Natural areas / wildlife habitat	1% NOT	11% LOW	46% MEDIUM	42% HIGH
N=277	4 Jordan River water trail (kayaking, etc.)	4% NOT	27% LOW	43% MEDIUM	26% HIGH
N=274	5 Nature education facilities.	4% NOT	26% LOW	49% MEDIUM	21% HIGH
N=276	6 Community garden.	5% NOT	21% LOW	48% MEDIUM	26% HIGH
N=275	7 Indoor exercise / fitness / aerobics. . . .	6% NOT	19% LOW	36% MEDIUM	39% HIGH
N=276	8 Indoor small events space (parties, etc.)	8% NOT	40% LOW	37% MEDIUM	15% HIGH
N=276	9 Gymnasium.	6% NOT	33% LOW	43% MEDIUM	18% HIGH
N=275	10 Racquetball/squash courts.	7% NOT	48% LOW	33% MEDIUM	12% HIGH
N=277	11 Swimming pool, indoor.	2% NOT	13% LOW	41% MEDIUM	44% HIGH
N=279	12 Swimming pool, outdoor.	3% NOT	16% LOW	39% MEDIUM	42% HIGH
N=275	13 Water play splash pad.	7% NOT	24% LOW	36% MEDIUM	33% HIGH
N=274	14 Outdoor events space.	2% NOT	21% LOW	48% MEDIUM	29% HIGH
N=11	15 Other _____	46% NOT	9% LOW	9% MEDIUM	36% HIGH

Q-10 Of the amenities listed in Q-9, which do you feel are most important to your household? (Please write the amenity number from Q-9 in the appropriate box.)

Most important N=269
 56% Trail, walking/running/bike
 11% Swimming pool, indoor
 7% Swimming pool, outdoor

Second most important N=269
 19% Natural areas/wildlife habitat
 17% Trail, walking/running/bike
 16% Swimming pool, outdoor

Third most important N=266
 12% Swimming pool, outdoor
 11% Indoor exercise/fitness/aerobics
 15% Natural areas/wildlife habitat

Next we would like to know your opinions on youth recreation programs.

Q-11 Listed below are youth programs. Please indicate whether you feel that each program should NOT be a priority, should be given a LOW priority, MEDIUM priority, or HIGH priority in the Salt Lake County Parks and Recreation Department.

Program number	Recreation Program	How much priority, if any, should each program have in the Salt Lake County Parks and Recreation Department? (Please circle your answer.)			
N=280	1 Youth Learn To Swim.	1% NOT	3% LOW	24% MEDIUM	72% HIGH
N=279	2 Youth athletics	1% NOT	5% LOW	34% MEDIUM	60% HIGH
N=278	3 Youth fitness and wellness	1% NOT	8% LOW	39% MEDIUM	53% HIGH
N=277	4 Youth gymnastic.	3% NOT	23% LOW	47% MEDIUM	27% HIGH
N=279	5 Youth art, dance, performing arts	3% NOT	19% LOW	43% MEDIUM	35% HIGH
N=277	6 Youth scholarships.	5% NOT	19% LOW	35% MEDIUM	41% HIGH
N=277	7 Youth learn to ice skate.	5% NOT	30% LOW	42% MEDIUM	23% HIGH
N=276	8 Programs for teens.	1% NOT	9% LOW	43% MEDIUM	47% HIGH
N=9	9 Other _____	44% NOT	LOW	11% MEDIUM	45% HIGH

Q-12 Of the programs listed in Q-11 which do you feel are most important to your household? (Please write the program number from Q-11 in the appropriate box.)

<p>Most important N=252</p> <p>44% Youth learn to swim</p> <p>23% Youth athletics</p> <p>12% Programs for teens</p>	<p>Second most important N=249</p> <p>27% Youth Athletics</p> <p>24% Youth learn to swim</p> <p>23% Youth fitness and wellness</p>	<p>Third most important N=244</p> <p>22% Youth fitness and wellness</p> <p>17% Youth art, dance, performing arts</p> <p>17% Programs for teens</p>
---	--	--

Now we would like to know your opinions on adult recreation programs.

Q-13 Listed below are adult programs. Please indicate whether you feel that each program should NOT be a priority, should be given a LOW priority, MEDIUM priority, or HIGH priority in the Salt Lake County Parks and Recreation Department.

Program number	Recreation Program	How much priority, if any, should each program have in the Salt Lake County Parks and Recreation Department? (Please circle your answer.)			
N=279	1 Adult learn to swim.	6% NOT	35% LOW	37% MEDIUM	22% HIGH
N=276	2 Adult learn to ice skate.	15% NOT	56% LOW	22% MEDIUM	7% HIGH
N=278	3 Adult art, dance, performing arts	7% NOT	33% LOW	41% MEDIUM	19% HIGH
N=278	4 Adult organized athletics.	4% NOT	20% LOW	49% MEDIUM	27% HIGH
N=279	5 Adult continuing education.	3% NOT	9% LOW	29% MEDIUM	59% HIGH
N=278	6 Senior fitness	2% NOT	5% LOW	37% MEDIUM	56% HIGH
N=20	7 Other _____	10% NOT	10% LOW	20% MEDIUM	60% HIGH

Q-14 Of the programs listed in Q-13 which do you feel are most important to your household? (Please write the program number from Q-13 in the appropriate box.)

<p>Most important N=257</p> <p>37% Adult continuing education</p> <p>21% Senior fitness</p> <p>20% Adult organized athletics</p>	<p>Second most important N=248</p> <p>28% Adult continuing education</p> <p>22% Senior fitness</p> <p>21% Adult organized athletics</p>	<p>Third most important N=234</p> <p>25% Senior fitness</p> <p>24% Adult art, dance, performing arts</p> <p>21% Adult organized athletics</p>
--	---	---

Next we would like to know your opinions on other recreation services and programs.

Q-15 Listed below are services. Please indicate whether you feel that each service should NOT be a priority, should be given a LOW priority, MEDIUM priority, or HIGH priority in the Salt Lake County Parks and Recreation Department.

Program number	Service	How much priority, if any, should each service have in the Salt Lake County Parks and Recreation Department? (Please circle your answer.)			
N=278	1 Daycare	16% NOT	25% LOW	32% MEDIUM	27% HIGH
N=276	2 Drop in childcare.	13% NOT	28% LOW	33% MEDIUM	26% HIGH
N=275	3 Before school programs.	11% NOT	34% LOW	38% MEDIUM	17% HIGH
N=277	4 After school programs	4% NOT	10% LOW	41% MEDIUM	45% HIGH
N=276	5 School break (fall, winter, etc.)	5% NOT	24% LOW	40% MEDIUM	31% HIGH
N=276	6 Tennis lessons and leagues	8% NOT	31% LOW	48% MEDIUM	13% HIGH
N=278	7 Water fitness.	4% NOT	21% LOW	48% MEDIUM	27% HIGH
N=274	8 Programs for people with disabilities	2% NOT	10% LOW	44% MEDIUM	44% HIGH
N=276	9 Community events (Easter egg hunts, holiday celebrations, Halloween carnivals). . .	4% NOT	26% LOW	36% MEDIUM	34% HIGH
N=275	10 Athletic special events (5k races, etc.)	3% NOT	18% LOW	50% MEDIUM	29% HIGH
N=279	11 Nature/environmental education	2% NOT	24% LOW	44% MEDIUM	30% HIGH
N=279	12 Farmers markets.	2% NOT	9% LOW	36% MEDIUM	53% HIGH
N=277	13 Programs w/your pets (dog swims, etc.)	23% NOT	38% LOW	24% MEDIUM	15% HIGH
N=278	14 Volunteer opportunities.	1% NOT	10% LOW	53% MEDIUM	36% HIGH
N=279	15 Open access computer labs.	10% NOT	31% LOW	41% MEDIUM	17% HIGH
N=279	16 Long term fitness challenges.	6% NOT	19% LOW	50% MEDIUM	25% HIGH
N=5	17 Other _____	40% NOT	20% LOW	MEDIUM	40% HIGH
N=2	18 Other _____	100% NOT	LOW	MEDIUM	HIGH

Q-16 Of the services listed in Q-15 which do you feel are most important to your household? (Please write the program number from Q-15 in the appropriate box.)

Most important N=262 21% Farmers market 12% After-school programs 10% Community events	Second most important N=260 22% Farmers market 11% After-school programs 11% Community events	Third most important N=252 15% After-school programs 13% Farmers market 11% Volunteer Opportunities
---	--	--

Next, we want to ask you about recreational programs or special events provided by Salt Lake County Parks and Recreation.

Q-17 Have you or other members of your household participated in recreational programs or special events such as N=281 5K races, holiday events (Easter Egg Hunts, Trunk or Treat, etc.) offered by Salt Lake County Parks & Recreation during the past 12 months?

- 41% YES
- 59% NO (SKIP TO QUESTION Q-20.)

Q-18 If YES, approximately how many different Salt Lake County Parks & Recreation recreational programs or special N=118 events have you or members of your household participated in over the past 12 months?

- 30% ONE PROGRAM
- 47% TWO OR THREE PROGRAMS
- 19% FOUR TO SIX PROGRAMS
- 3% SEVEN TO TEN PROGRAMS
- 1% MORE THAN TEN PROGRAMS

Q-19 How do you rate the overall quality of the programs or events in which you and members of your household have N=139 participated?

- 24% EXCELLENT
- 68% GOOD
- 7% FAIR
- 1% POOR

Q-20 How have you learned about the programs or services offered by Salt Lake County Parks & Recreation? (Circle all that apply.)

N=276

- | | |
|---------------------------------------|--|
| 44% NEWSPAPER | 27% RECREATION BROCHURE/PROGRAM GUIDE |
| 20% SALT LAKE COUNTY WEBSITE | 5% CONVERSATIONS WITH PARKS AND RECREATION STAFF |
| 30% SCHOOLS | 5% CABLE TELEVISION |
| 15% COUNTY INFORMATION | 40% COMMUNITY/NEIGHBORHOOD NEWSLETTERS |
| 41% PROGRAM FLIERS | 7% SOCIAL MEDIA(FACEBOOK, TWITTER, ETC.) |
| 43% FRIENDS/NEIGHBORS | 7% INTERNET (If so what Site?_____) |
| 13% RECREATION CENTER BULLETIN BOARDS | 4% OTHER_____ |
| 15% RADIO | |

We will now ask some questions on potential actions for Salt Lake County Parks and Recreation.

Q-21 Following is a list of POTENTIAL actions that Salt Lake County Parks and Recreation could take to improve recreation, parks, and community activities in Salt Lake County. For each potential action, please indicate if that should NOT be a priority, should be given a LOW priority, MEDIUM priority, or HIGH priority

Action number	Existing Parks and Recreation Facilities	How much priority, if any, should each action have in the Salt Lake County Parks and Recreation Department?			
N=277	1 Higher level of park maintenance.	3% NOT	18% LOW	55% MEDIUM	24% HIGH
N=277	2 Higher level of building maintenance.	3% NOT	18% LOW	55% MEDIUM	24% HIGH
N=274	3 Higher level of sports field maintenance.	4% NOT	22% LOW	52% MEDIUM	22% HIGH
N=274	4 Higher level of golf course maintenance.	16% NOT	41% LOW	34% MEDIUM	9% HIGH
N=275	5 Higher level of natural area maintenance.	4% NOT	23% LOW	51% MEDIUM	22% HIGH
N=277	6 Improve regional trails (Jordan River, Bonneville Shoreline, etc)	3% NOT	14% LOW	36% MEDIUM	47% HIGH
N=275	7 Light more sports fields.	7% NOT	29% LOW	41% MEDIUM	23% HIGH
N=273	8 Convert natural turf grass sports fields to synthetic turf.	45% NOT	32% LOW	18% MEDIUM	5% HIGH
New Parks and Recreation Facilities					
N=277	9 Purchase land for regional trails.	8% NOT	18% LOW	34% MEDIUM	40% HIGH
N=277	10 Purchase land to preserve natural areas, open space.	6% NOT	13% LOW	27% MEDIUM	54% HIGH
N=276	11 Purchase land for parks.	5% NOT	15% LOW	37% MEDIUM	43% HIGH
N=268	12 Build new passive use parks.	6% NOT	24% LOW	47% MEDIUM	23% HIGH
N=273	13 Build new athletic fields.	9% NOT	32% LOW	42% MEDIUM	17% HIGH
N=276	14 Build new swimming pools.	9% NOT	27% LOW	35% MEDIUM	29% HIGH
N=277	15 Build new walking, hiking and biking trails.	4% NOT	11% LOW	31% MEDIUM	54% HIGH
N=273	16 Build new outdoor special event venues.	12% NOT	35% LOW	39% MEDIUM	14% HIGH

Q-22 Of the actions listed in Q-21 which is most important to pay for with tax dollars? (Please write the action number from Q-21 in the appropriate box.)

Most important N=264
 19% Build new walking, hiking and biking trails
 18% Purchase land to preserve natural areas, open space
 15% Higher level of park maintenance

Second most important N=263
 13% Improve regional trails (Jordan River, Bonneville Shoreline, etc.)
 12% Build new walking, hiking and biking trails
 12% Purchase land for parks

Third most important N=259
 17% Build new walking, hiking and biking trails
 14% Purchase land to preserve natural areas, open space
 12% Purchase land for regional trails

Q-23 Listed below are some activities and recreation programs. Please indicate whether you feel the costs to run each program should be paid from TAXES, a COMBINATION of taxes and user fees, or only with user FEES.

Recreation Program		How should the costs to run this program be paid? (Please circle your answer.)		
N=277	1 Youth fitness and wellness	8% TAXES	56% COMBINATION	36% FEES
N=276	2 Youth athletics	4% TAXES	48% COMBINATION	48% FEES
N=276	3 Youth art, dance, performing arts	1% TAXES	39% COMBINATION	60% FEES
N=271	4 Youth scholarship programs.	16% TAXES	55% COMBINATION	29% FEES
N=276	5 Programs for teens.	12% TAXES	56% COMBINATION	32% FEES
N=276	6 Before and after school programs.	18% TAXES	48% COMBINATION	34% FEES
N=276	7 School break programs (fall, summer, etc.).	7% TAXES	43% COMBINATION	50% FEES
N=276	8 Adult organized athletics.	1% TAXES	19% COMBINATION	80% FEES
N=275	9 Adult art, dance, performing arts.	TAXES	20% COMBINATION	80% FEES
N=277	10 Adult continuing education.	2% TAXES	36% COMBINATION	62% FEES
N=275	11 Senior fitness	13% TAXES	58% COMBINATION	29% FEES
N=276	12 Community events (Easter egg hunts, holiday celebrations, Halloween carnivals, etc.).	23% TAXES	43% COMBINATION	34% FEES
N=277	13 Nature programs/environmental education.	23% TAXES	51% COMBINATION	26% FEES
N=276	14 Open access computer labs.	14% TAXES	36% COMBINATION	50% FEES
N=277	15 Drop in childcare.	4% TAXES	26% COMBINATION	70% FEES
N=271	16 Programs for people with disabilities.	38% TAXES	49% COMBINATION	13% FEES
N=276	17 Indoor space for small events (parties, meetings)	2% TAXES	26% COMBINATION	72% FEES
N=275	18 Athletic special events (5k races, etc).	3% TAXES	36% COMBINATION	61% FEES
N=272	19 Farmers markets.	11% TAXES	48% COMBINATION	41% FEES
N=18	20 _____	6% TAXES	56% COMBINATION	39% FEES

Q-24 Listed below are reasons that may **prevent** people from using Salt Lake County Parks & Recreation facilities and programs. (Please circle the numbers of ALL reasons that **prevent** you or other members of your household from using Salt Lake County Parks & Recreation facilities and programs.)

- | | |
|---|--|
| 12% Facilities are not well maintained | 14% Program or facility not offered |
| 10% Facilities lack right equipment | 7% Security is insufficient |
| 9% Lack of quality programs | 26% Too far from our residence |
| 16% Class full | 22% Program times not convenient |
| 19% Use facilities in other cities/counties | 17% Fees are too high |
| 5% Poor customer service by staff | 17% Do not know locations of facilities |
| 23% Not Interested | 4% Not accessible for people with disabilities |
| 45% I do not know what is being offered | 13% Lack of parking near facilities & parks |
| 15% Operating hours not convenient | 10% Facilities are often not available |
| 6% Registration for programs difficult | 3% _____ |

Q-25 Listed below are some services of the Salt Lake County Parks and Recreation Department. Please indicate the extent you are satisfied or dissatisfied with each of the following services by using the scale below:

Services		Very Satisfied	Satisfied	Undecided or unsure	Dissatisfied	Very Dissatisfied
N=272	1 Overall value your household receives from Salt Lake County Parks & Recreation.	16% VS	56% S	23% U	4% D	1% VDIS
N=272	2 Maintenance of parks.	15% VS	70% S	9% U	5% D	1% VDIS
N=271	3 Number of parks.	13% VS	53% S	20% U	14% D	VDIS
N=270	4 Security in parks.	6% VS	35% S	45% U	11% D	3% VDIS
N=269	5 Availability of information about programs and facilities.	6% VS	36% S	33% U	20% D	5% VDIS
N=268	6 Quality of programs for families with children.	10% VS	41% S	45% U	3% D	1% VDIS
N=269	7 Quality of programs for adults	6% VS	37% S	48% U	7% D	2% VDIS
N=266	8 User friendliness of Parks and Recreation website	5% VS	37% S	52% U	5% D	1% VDIS
N=265	9 Programs for people with disabilities	1% VS	19% S	76% U	3% D	1% VDIS
N=270	10 Variety of programs.	6% VS	43% S	43% U	8% D	1% VDIS
N=267	11 Ease of registering for classes /programs.	6% VS	41% S	49% U	4% D	VDIS
N=268	12 Ease of renting/reserving a facility.	5% VS	33% S	57% U	4% D	1% VDIS
N=269	13 Fees charged for programs/facilities	5% VS	49% S	38% U	7% D	1% VDIS
N=268	14 Overall level of customer service	7% VS	55% S	34% U	3% D	1% VDIS
N=259	15 Drop in childcare programs.	3% VS	11% S	80% U	4% D	2% VDIS

Q-26 Listed below are **benefits** from having Salt Lake County Parks & Recreation facilities and programs. Please indicate the extent you agree or disagree with each of the following benefits using the scale below:

Statement Number	Benefit	Strongly Agree	Mildly Agree	Undecided or unsure	Mildly Disagree	Strongly Disagree
N=274	1 Improves physical health and wellness	64% SA	28% MA	6% U	1% MD	1% SD
N=274	2 Helps reduce neighborhood crime	32% SA	36% MA	24% U	7% MD	1% SD
N=274	3 Makes Salt Lake County a better place to live	67% SA	28% MA	3% U	MD	1% SD
N=273	4 Preserves open-space	58% SA	30% MA	10% U	1% MD	1% SD
N=273	5 Protects the environment	48% SA	31% MA	19% U	1% MD	1% SD
N=274	6 Increases property values in surrounding areas	48% SA	30% MA	17% U	4% MD	1% SD
N=272	7 Improves mental health and reduces stress	53% SA	33% MA	11% U	2% MD	1% SD
N=271	8 Increases cultural and community interaction	42% SA	39% MA	15% U	3% MD	1% SD
N=274	9 Attracts new residents	37% SA	32% MA	25% U	5% MD	1% SD
N=273	10 Attracts new businesses	23% SA	28% MA	42% U	6% MD	1% SD
N=273	11 Protects historical assets of the County	27% SA	37% MA	32% U	3% MD	1% SD
N=272	12 Promotes tourism to the County	25% SA	27% MA	37% U	8% MD	3% SD

Q-27 Of the benefits listed in Q-26 which is most important to your household? (Please write the statement number from Q-26 in the appropriate box.)

<p>Most important N=259 55% Improves physical health and wellness 16% Makes Salt Lake County a better place to live 9% Preserves open space</p>
--

<p>Second most important N=257 20% Makes Salt Lake County a better place to live 16% Helps reduce neighborhood crime 16% Preserves open space</p>
--

<p>Third most important N=254 17% Makes Salt Lake County a better place to live 16% Improves mental health and Stress 14% Preserves open space</p>

We would now like to learn more about recreation organizations you and your household members use.

Q-28 Please circle ALL the organizations that you and members of your household have used for recreation activities during the last 12 months.
 N=270

- 2% YMCA
- 43% RELIGIOUS AFFILIATED FACILITY
- 52% LOCAL SCHOOLS
- 67% STATE PARKS
- 13% PRIVATE CLUB (TENNIS, GOLF, ETC.)
- 44% PRIVATE GYM
- 5% SPECIAL RECREATION DISTRICT
- 82% SALT LAKE COUNTY PARKS & RECREATION
- 63% NATIONAL PARK/NATIONAL FOREST
- 19% NEIGHBORING COUNTIES
- 8% HOMEOWNER ASSOCIATION/APARTMENT COMPLEX
- 3% BOYS AND GIRLS CLUB
- 7% _____

Q-29 Of the organizations listed in Q-28 which organizations were used most by household members ages 11 years or younger during the past 12 months. (Please write in the organization number from Q-28 in the appropriate box or if you have no household members 11 or younger circle that answer.)

<p>Used most N=123 49% Salt Lake County Parks and Recreation 18% Local Schools</p>
--

<p>Used second most N=118 23% Local schools 19% Salt Lake County Parks and Recreation</p>

56% No one in household ages 11 years or younger

Q-30 Of the organizations listed in Q-28 which organizations were used most by household members ages 12 to 17 years during the past 12 months. (Please write in the organization number from Q-28 in the appropriate box or if you have no household members ages 12 to 17 years circle that answer.)

<p>Used most N=73 34% Local Schools 19% Salt Lake County Parks and Recreation</p>

<p>Used second most N=69 20% Salt Lake County Parks and Recreation 20% Local Schools</p>
--

73% No one in household ages 12 to 17 years

Q-31 Of the organizations listed in Q-28 which organizations were used most by household members' ages 18 to 54 years during the past 12 months. (Please write in the organization number from Q-28 in the appropriate box or if you have no household members ages 18 to 54 years circle that answer.)

<p>Used most N=206</p> <p>33% Salt Lake County Parks and Recreation</p> <p>28% Private gym</p>	<p>Used second most N=192</p> <p>21% Salt Lake County Parks and Recreation</p> <p>20% State Parks</p>	<p>27% No one in household ages 18 to 54 years</p>
--	---	--

Q-32 Of the organizations listed in Q-28 which organizations were used most by household members ages 55 and over during the past 12 months. (Please write in the organization number from Q-28 in the appropriate box or if you have no household members ages 55 and over circle that answer.)

<p>Used most N=80</p> <p>31% Salt Lake County Parks and Recreation</p> <p>20% National Park/National Forest</p>	<p>Used second most N=72</p> <p>26% State Park</p> <p>24% Salt Lake County Parks and Recreation</p>	<p>60% No one in household ages 55 and over</p>
---	---	---

Finally, we'd like to ask you a little about your household.

Q-33 How many years have you lived in Salt Lake County?

N=279

- 3% 1-2 YEARS
- 5% 3-5 YEARS
- 11% 6-10 YEARS
- 20% 11-20 YEARS
- 17% 21-30 YEARS
- 44% MORE THAN 30 YEARS

Q-34 Are you renting, buying, or do you own your own home in Salt Lake County?

N=276

- 7% RENTING
- 28% BUYING
- 65% OWN

Q-35 Which category best describes your age?

N=279

- 1% 18 – 24
- 23% 25 – 34
- 27% 35 – 44
- 18% 45 – 54
- 17% 55 – 64
- 14% 65 OR MORE

Q-36 Please circle the number of persons, including yourself, in your household for each of the following age categories:

	Age Category	Circle the number of persons in your household for each age category					
N=277	1 Ages 5 Younger	70% ZERO	19% 1	11% 2	3	4	5 OR MORE
N=277	2 Ages 6-9	79% ZERO	17% 1	4% 2	3	4	5 OR MORE
N=277	3 Ages 10-14	80% ZERO	13% 1	6% 2	1% 3	4	5 OR MORE
N=277	4 Ages 15-19	84% ZERO	12% 1	3% 2	1% 3	4	5 OR MORE
N=277	5 Ages 20-24	86% ZERO	10% 1	4% 2	3	4	5 OR MORE
N=277	6 Ages 25-34	65% ZERO	17% 1	17% 2	1% 3	4	5 OR MORE
N=277	7 Ages 35-44	65% ZERO	18% 1	17% 2	3	4	5 OR MORE
N=277	8 Ages 45-54	74% ZERO	16% 1	10% 2	3	4	5 OR MORE
N=277	9 Ages 55-64	78% ZERO	13% 1	9% 2	3	4	5 OR MORE
N=277	10 Ages 65 or more	79% ZERO	14% 1	6% 2	1% 3	4	5 OR MORE

Q-37 Are you male or female?

N=273

33% MALE
67% FEMALE

Q-38 Which of the following categories best describes your racial or ethnic identification? (Circle one answer)

N=274

AFRICAN AMERICAN/BLACK
2% ASIAN
PACIFIC ISLANDER
4% HISPANIC/LATIN
91% WHITE/CAUCASIAN
1% NATIVE AMERICAN
2% OTHER _____

Q-39 Do you or someone in your household have a cognitive or physical disability?

N=280

13% YES
87% NO

Q-40 Are you a dog owner?

N=282

45% YES
55% NO

Q-41 What is your zip code? _____

	City	Frequency	Valid Percent
84020	West Valley City	104	36.9
84047	Midvale	49	17.4
84070	Sandy	65	23.0
84092	Sandy	62	22.0

	City	Frequency	Valid Percent
84093	Sandy	1	.4
84094	Sandy	1	.4
Total		282	100.0

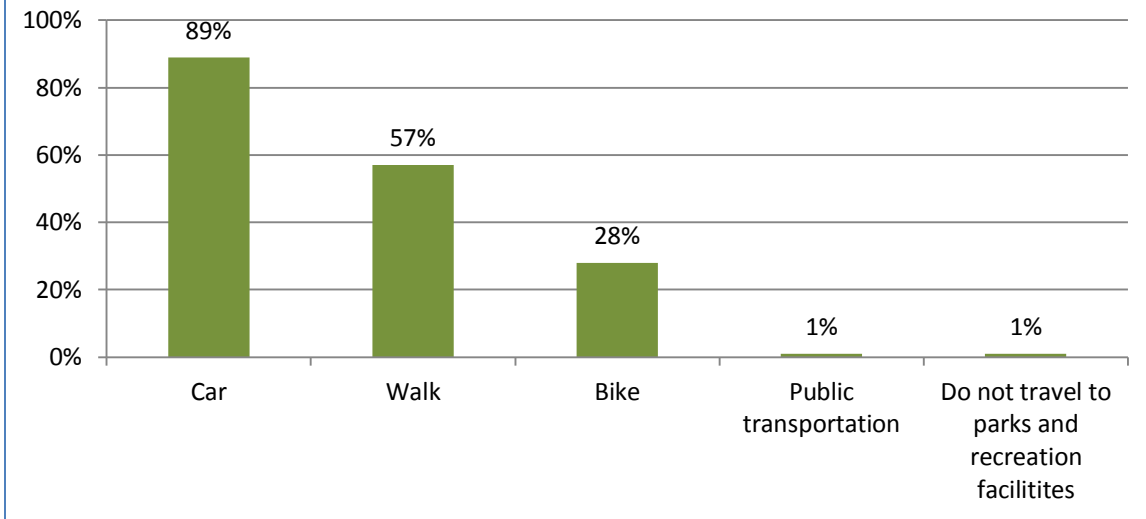
Your comments will be appreciated, either here or in a separate envelope.

Thank you for your help.

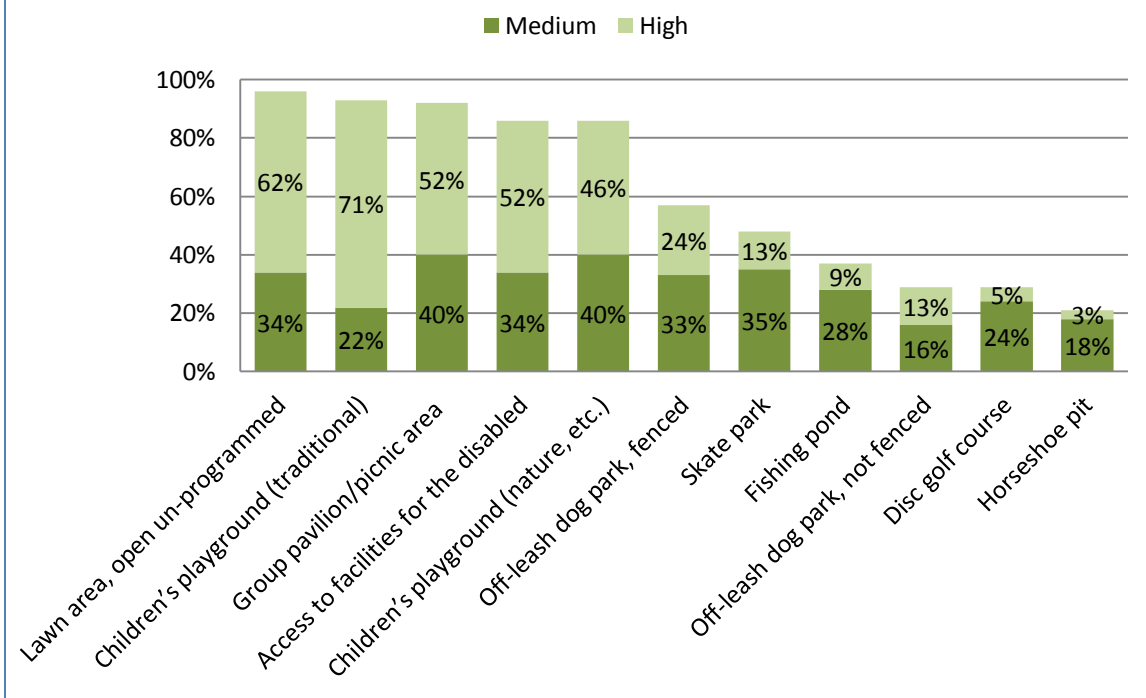
Please return your completed questionnaire in the enclosed return-reply envelope to:

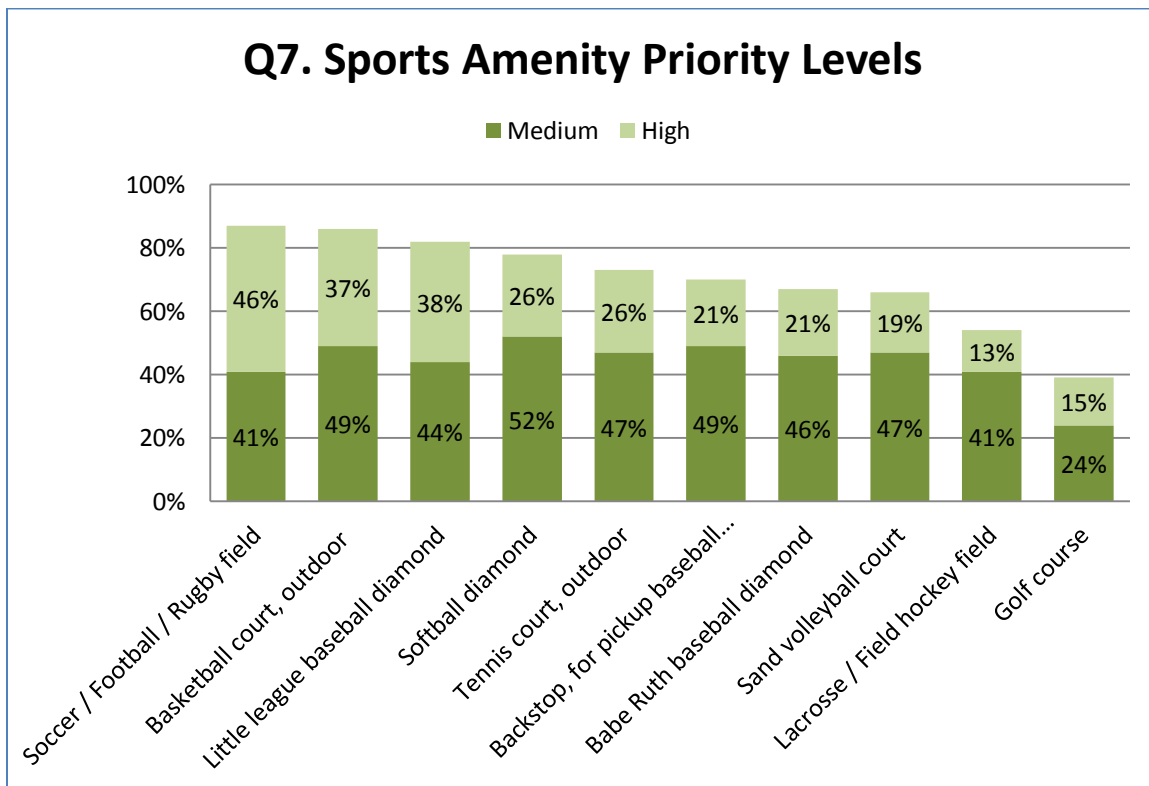
Salt Lake County Parks & Recreation
 Attn: Martin Jensen S-4700
 PO BOX 27637
 Salt Lake City, UT 84127-9914

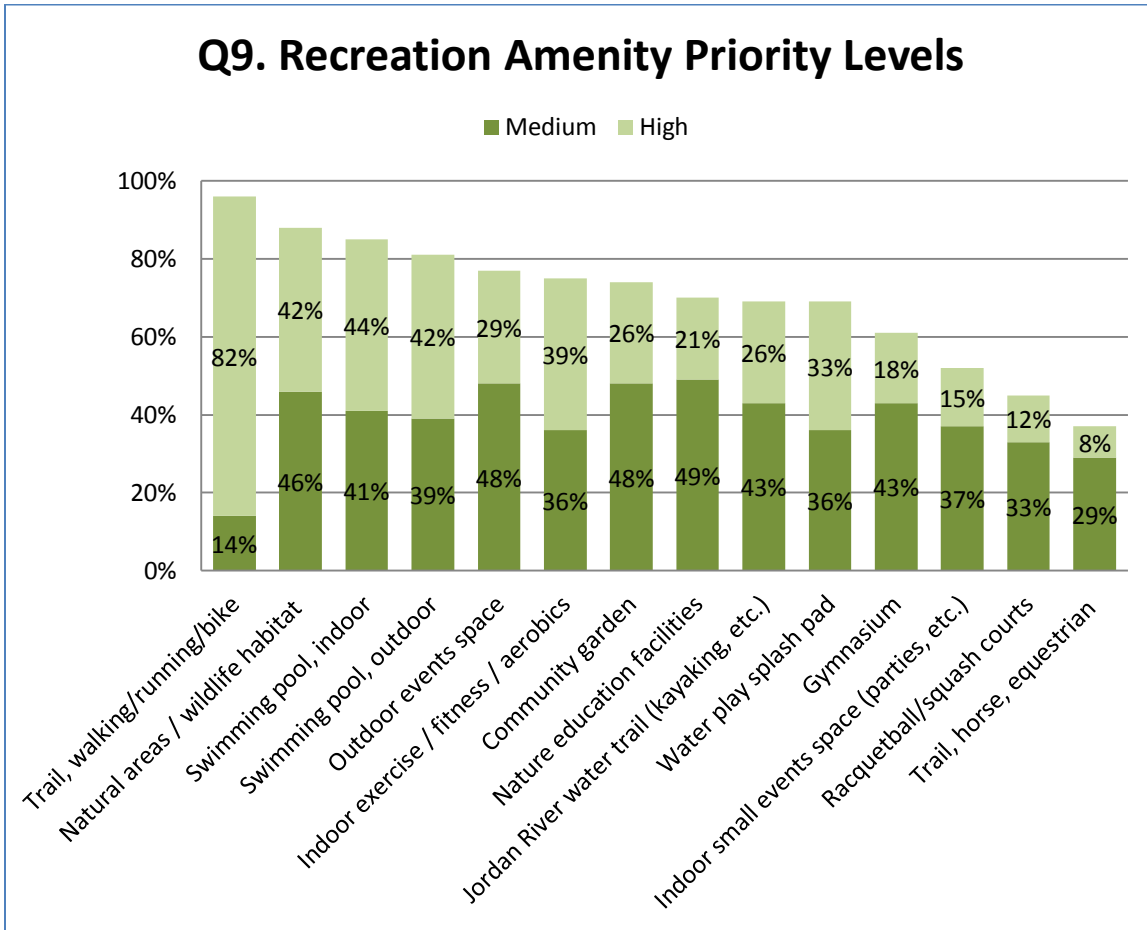
Q4. How do you travel to parks and recreation facilities?

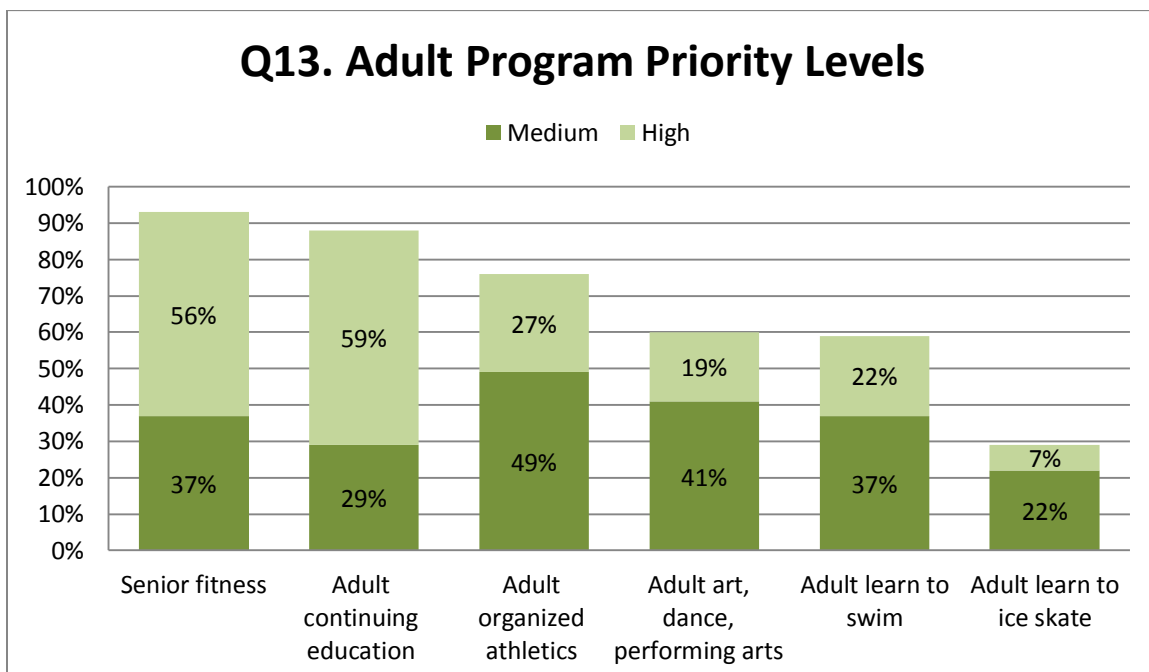
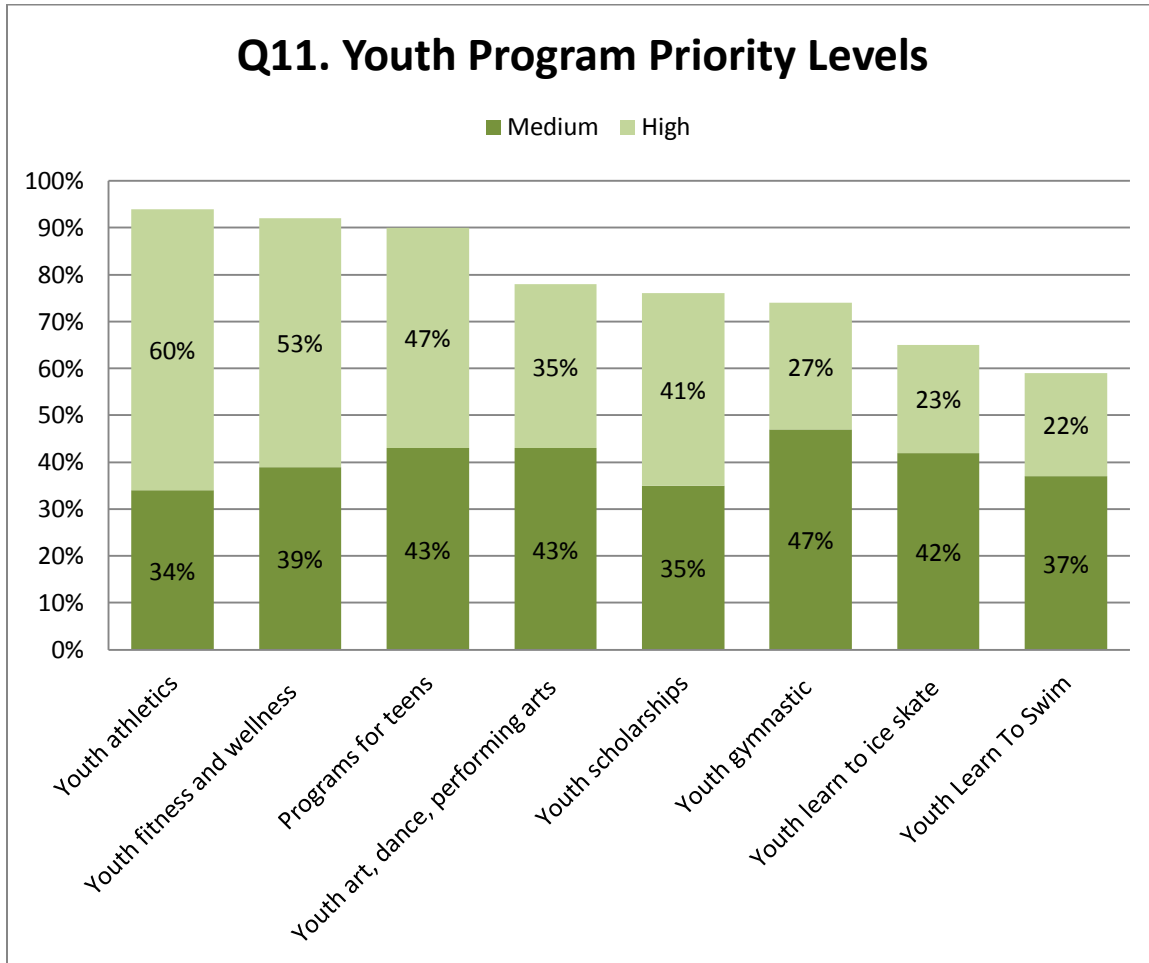


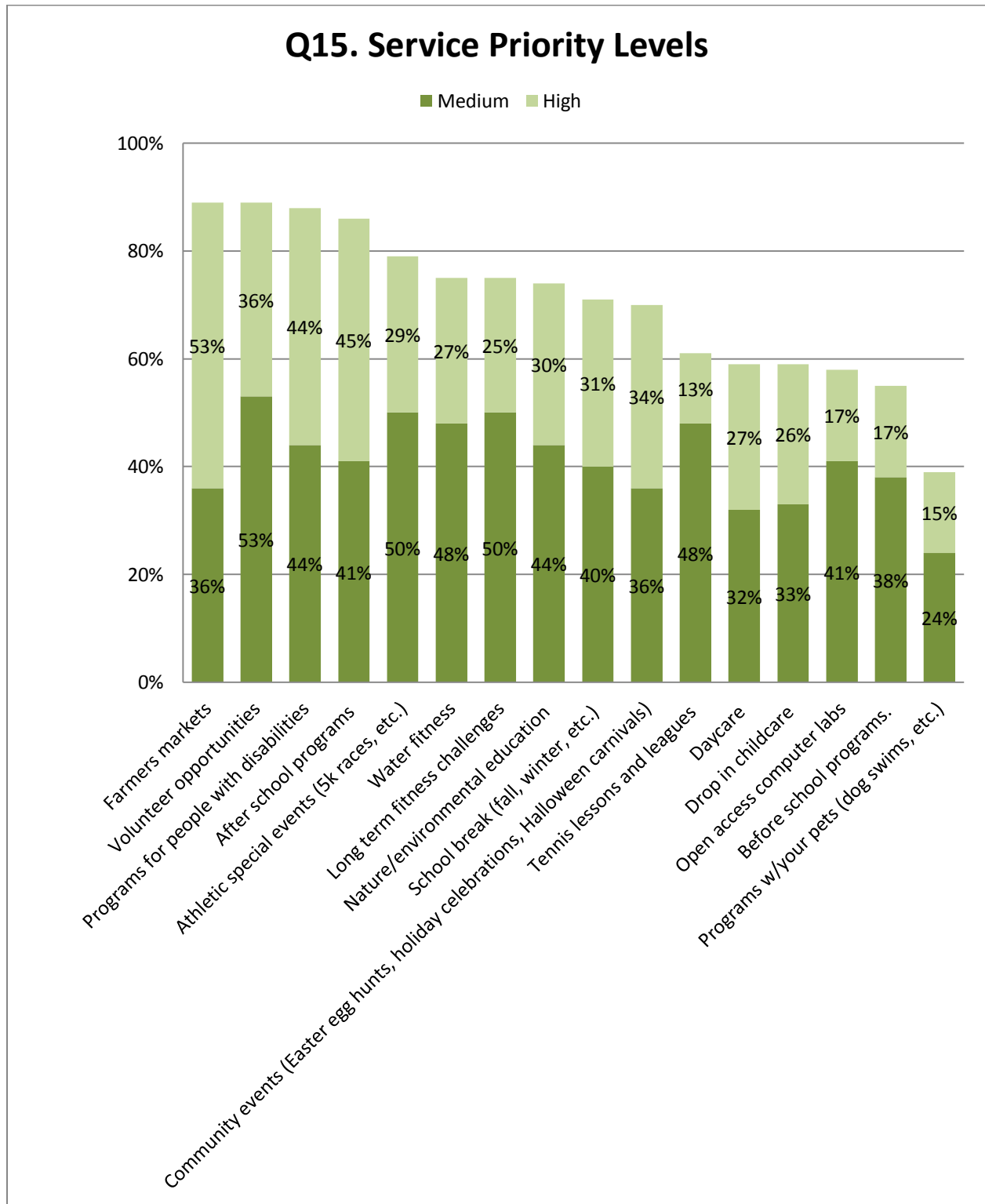
Q5. Park Amenity Priority Levels

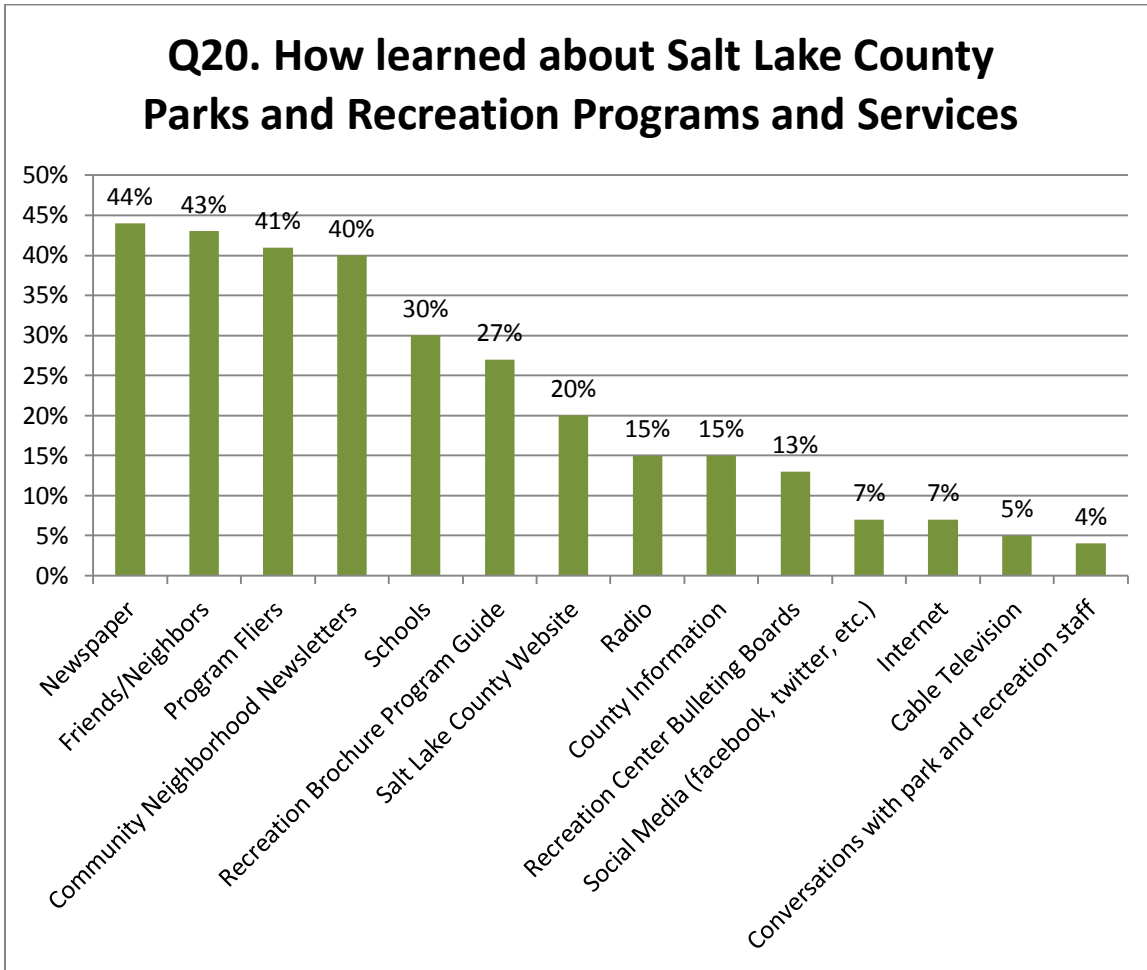




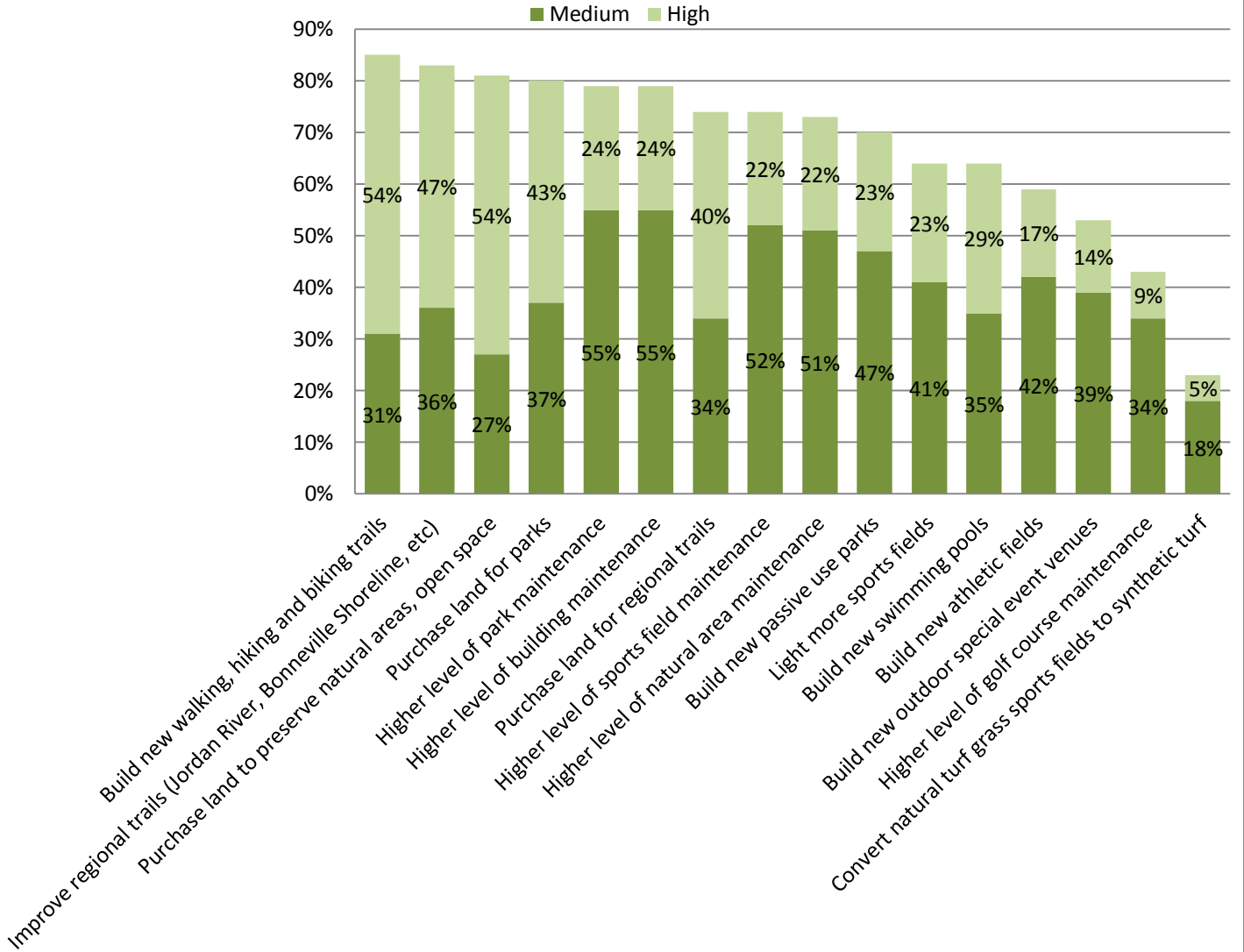




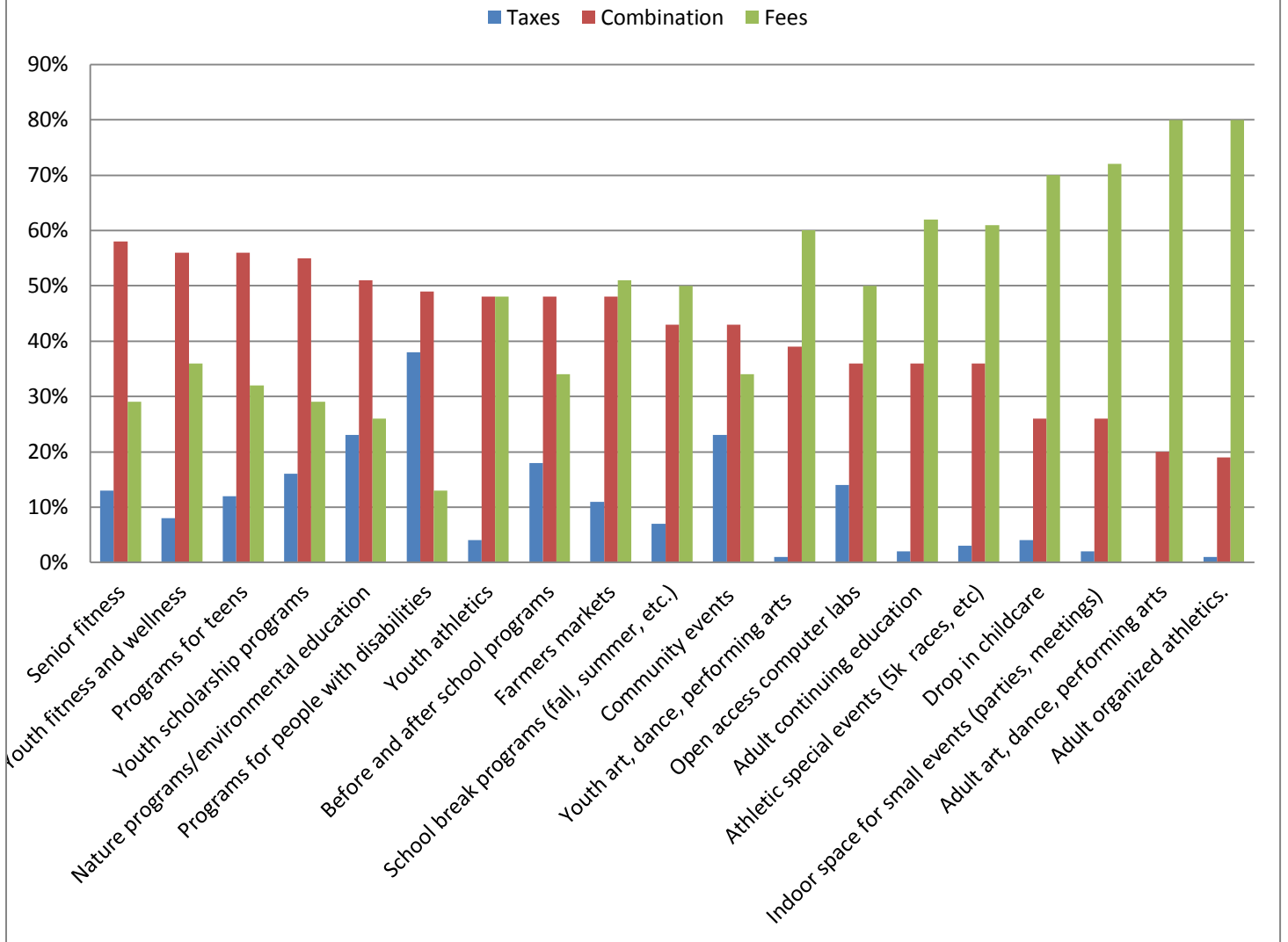




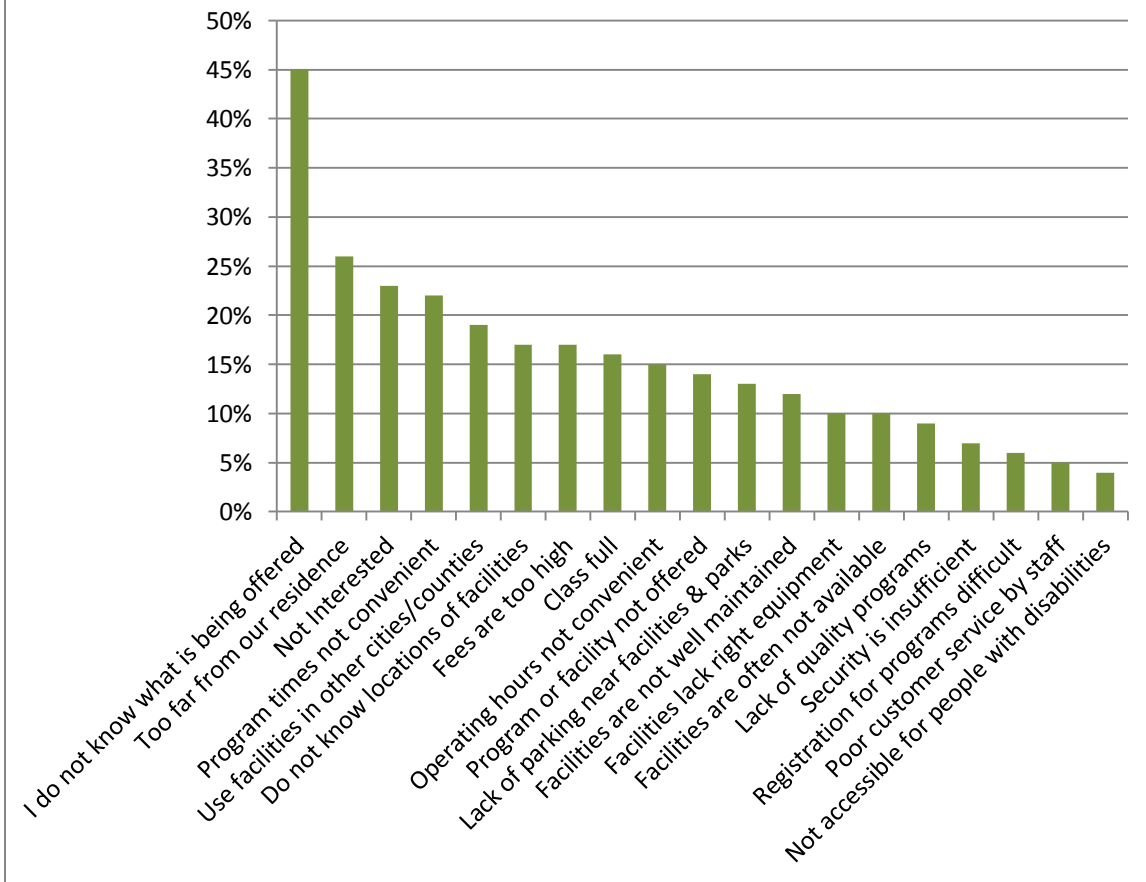
Q21. Action Priority Areas



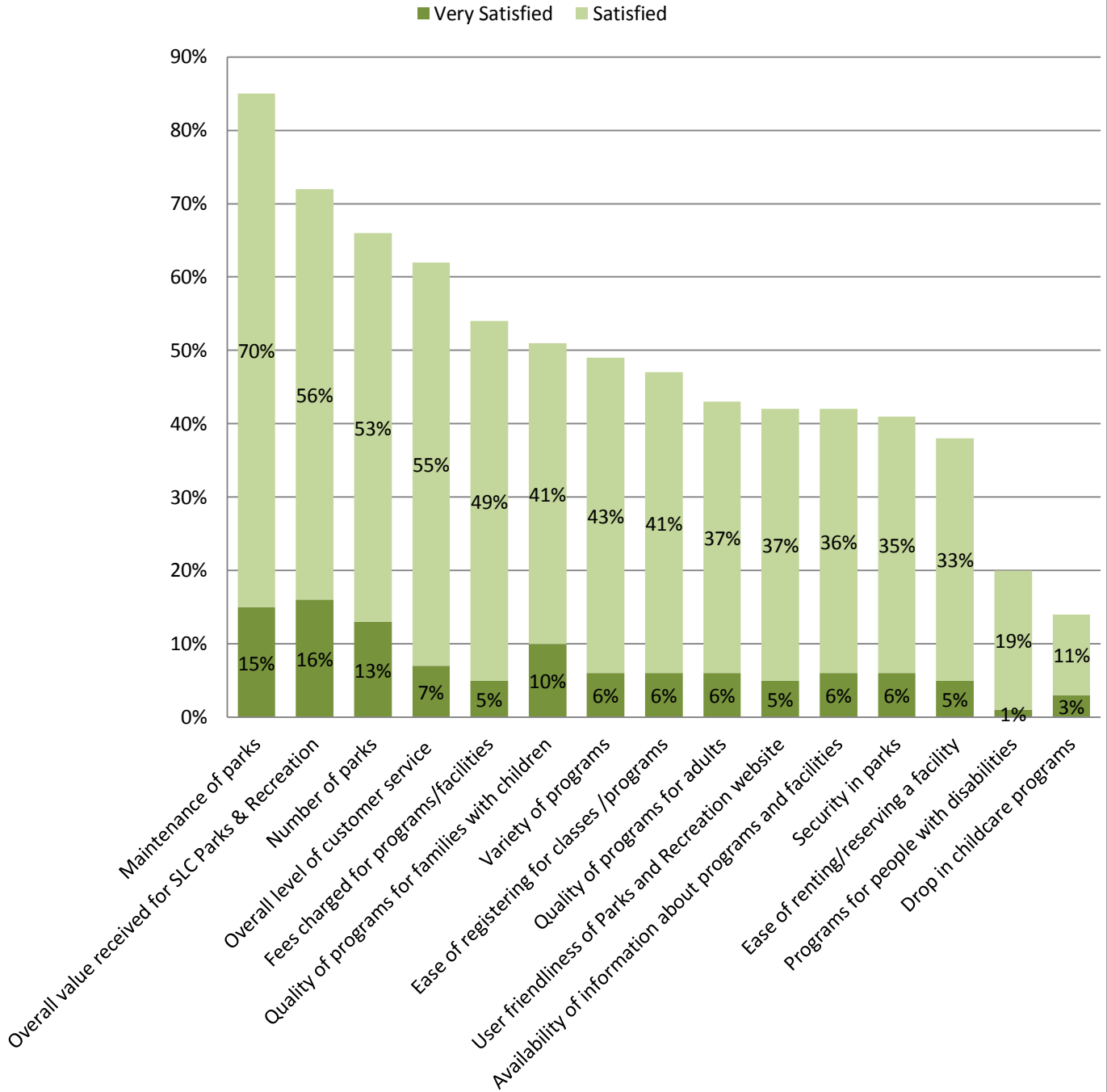
Q23. Cost to run program should be paid with taxes, combination of taxes and user fees, or user fees



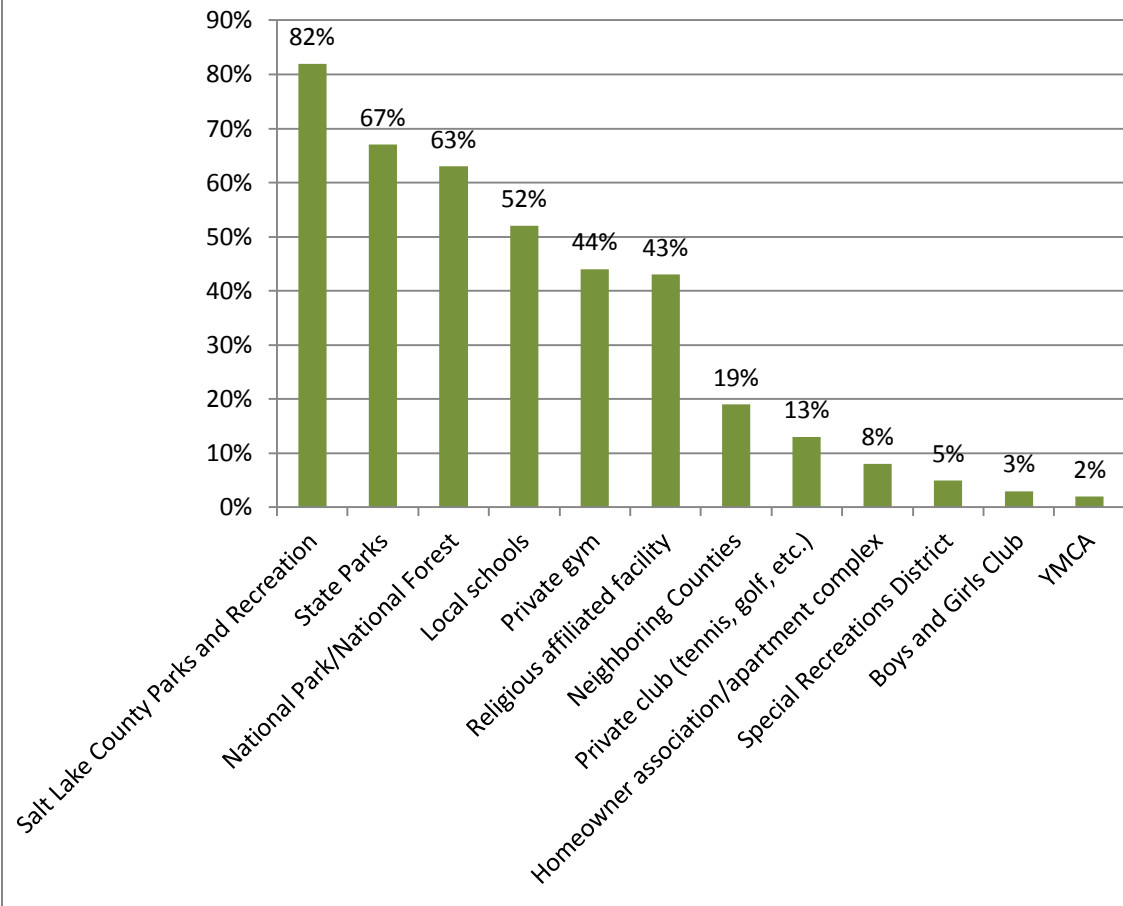
Q24. Reasons That Prevent People From Using Salt Lake County Parks & Recreation Facilities and Programs



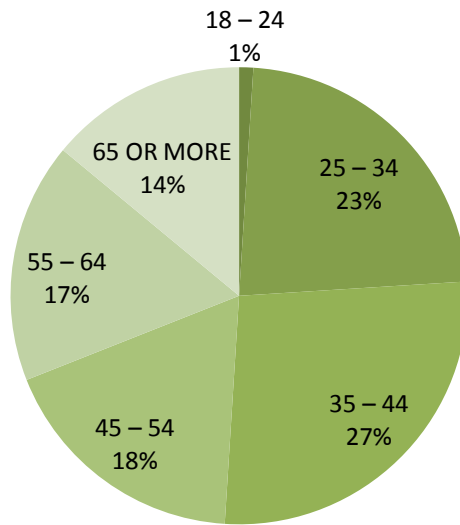
Q25. Salt Lake County Parks and Recreation Services Satisfaction Levels



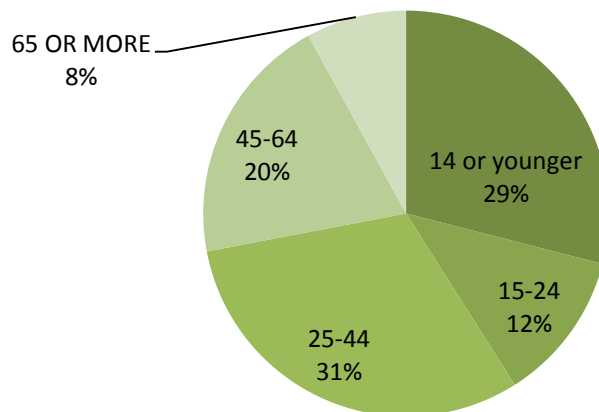
Q28. Organizations Used by Household in the Last Twelve Months



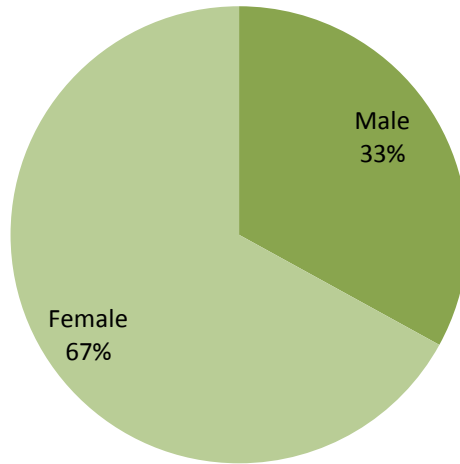
Q35. Ages of Respondents



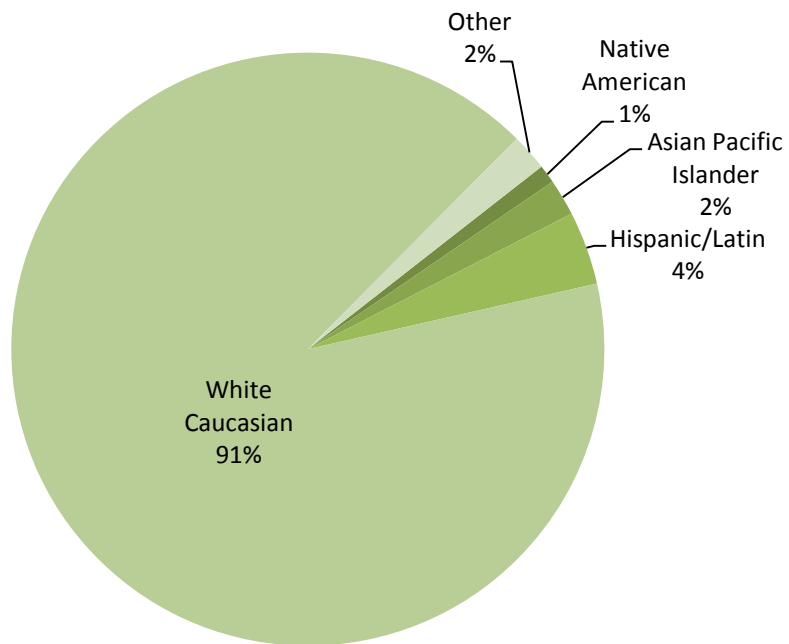
Q36. Household Composition by Age Categories



Q 37. Gender of Respondents



Q38. Racial or Ethnic Identification



Q41. What is your zip code?

