



# Wheeler Farm Tree Walk

A Conceptual Plan for Educational Planting Nodes and Associated Programming





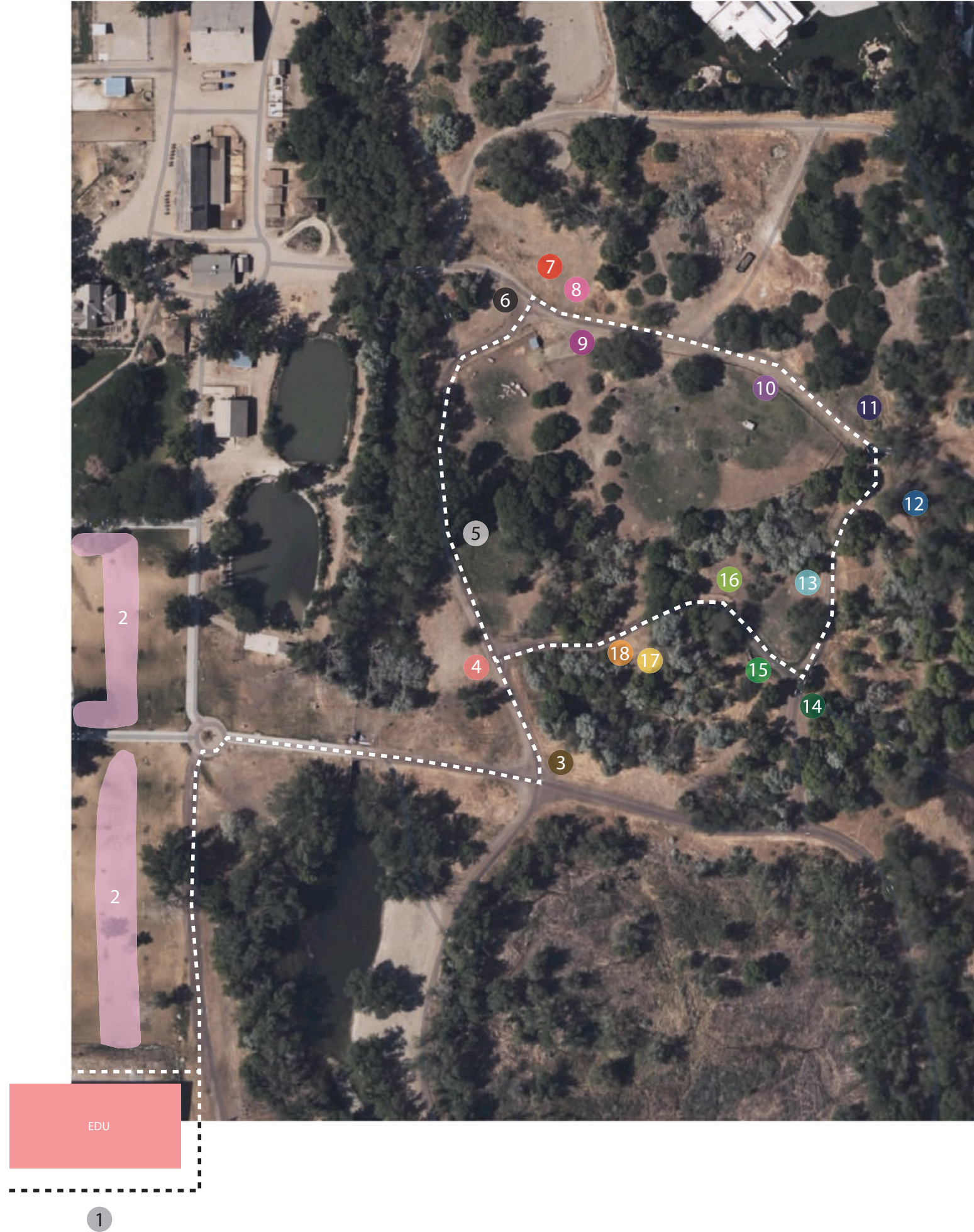
# Introduction

This document was prepared for Salt Lake County Parks and Recreation to guide the planning and implementation of a series of educational planting nodes within the eastern section of Wheeler Historic Farm. This is not intended to provide specific details, but rather to provide a vision and framework within which detailed, site-specific decisions can be explored and evaluated. This document explores ways to integrate educational “moments” into an existing landscape while using trees and vegetation as the primary educational focus. This document provides conceptual ideas that are intended to spark ideas, conversation, and eventual consensus on actual implementation.

The primary intentions of this document are to:

- Guide the Planning of the Wheeler Historic Fam tree walk
- Explore ways to maximize the selected area so that communities can enjoy this space
- Planning the use of trees and vegetation

Best practices, local expertise, and subject matter experts should be consulted in order to make the ideas in this document a reality.



## Tree Walk Nodes

- 1 **Riparian:** Located within the retention pond at the Outdoor Education Center. The display demonstrates the importance and effect of trees and plants on water quality and riparian life.
- 2 **Windbreak Walk:** A windbreak made by uniform rows of trees that create an iconic look commonly found on Utah farms. Trees will be selected from those that are native or adaptive and will thrive in Utah's climate.
- 3 **Native Peoples:** Display of trees and plants that were commonly used by Native Peoples for a variety of uses like medicine, boats, shelter, and tools.
- 4 **Pioneer Journey:** Trees used by pioneers for boats and handcarts that helped them get to the Salt Lake Valley.
- 5 **Pioneer Trees:** Showcases the first trees that the pioneers may have seen as they entered the Salt Lake Valley.
- 6 **Lighting Tree:** Existing node where the lightning tree is located. This node will include a nature play area.
- 7 **Orchard:** Examples of fruit trees that are commonly used in orchards.
- 8 **Victorian Era:** Trees used for building Victorian-era homes.
- 9 **Native Trees:** Showcase the native trees of Utah.
- 10 **Birds and Bats :** Trees that attract birds and bats. This will include bird feeders and bat boxes. This node is located behind an existing fence and will not be accessible from the trail.
- 11 **Texture Garden:** Plants with a variety of colors, textures, and sounds. This node will include a nature play area.
- 12 **Tree Canopy:** A display of how canopy layering is essential for a healthy and diverse wildlife habitat.
- 13 **Pollinators:** Trees and plants that attract pollinators such as birds, moths, insects, butterflies, and more.
- 14 **State Plants:** A display of the state plants of Utah.
- 15 **Spring Interest:** Plants that will stand out in the Spring.
- 16 **Summer Interest:** Plants that stand out in the Summer.
- 17 **Fall Interest:** Plants that stand out in the Fall.
- 18 **Winter Interest:** Plants that stand out in the Winter.

# Proposed Plant List by Node:

## 1 *Riparian Area:*

### Trees:

- Willow
- Box Elder
- River Birch

### Shrubs/Perennials:

- Grasses
- Dogwood

## 2 *Tree Walk:*

### Trees:

- Ginkgo
- Burr Oak
- Ohio Buckeye
- Western Catalpa
- Japanese Zelkova
- Kentucky Coffee

## 3 *Native Peoples Trees:*

### Trees:

- Cottonwood (carving wood)
- Birch (canoes)
- Ponderosa Pine (medicine)
- Pinyon Pine (food)
- Lodgepole Pine (Tepees)
- Hawthorne (medicine)
- Juniper (medicine)

## 4 *Pioneer Journey:*

### Trees:

- Burr Oak
- English Oak

## 5 *Pioneer Trees:*

### Trees:

- Cedar
- Juniper
- Cottonwood

## 6 *Lighting Tree:*

### Trees:

- Stoch Pine
- Austrian Pine
- Douglas Fir
- White Fir
- Box Elder

## 7 *Orchard:*

### Backdrop Trees:

- Existing Trees
- Douglas Fir
- Austrian Pine

### Fruit Trees:

- Apple Tree
- Plum Tree
- Apricot Tree
- Cherry Tree (Especially)
- Pear Tree

## 8 *Victoria Tree Materials:*

### Trees:

- Oak
- Birch
- Colorado Spruce
- Lodgepole Pine

## 9 *Native Trees:*

### Trees:

- Douglas Fir
- Rocky Mountain Maple
- Utah Juniper

### Shrubs:

- Mountain Mahogany
- Rubber Rabbitbrush
- Scrub Oak

## 10 *Birds/Bats:*

### Trees:

- Eastern Red Cedar
- Burr Oaks
- Crab Apple
- Serviceberry
- Mulberry

## 11 *5 Senses:*

### Trees:

- Japanese Maple
- Smoke Tree
- Nokta False Cypress
- Weeping Cherry

### Shrubs:

- Lambs Ear
- Snowmound Spirea
- Japanese Spirea
- Agave

## 12 *Tree canopy:*

### Large Trees: (30'-25')

- Existing Trees

### Medium Trees: (25'-15')

- American Hornbeam
- Maple

### Small Trees: (15'-10')

- Paperbark Maple
- Hawthorne
- Magnolia

## 13 *Pollinators:*

### Trees:

- Golden Raintree
- Serviceberry
- Maples
- Eastern Redbud
- Choke Cherry

## 14 *State Plants:*

### Trees:

- Quaking Aspen
- Colorado Blue Spruce

### Flowers:

- Sego Lily

## 15 *Spring Interest:*

### Trees:

- Horse Chestnut
- Japanese Lilac Tree
- Flowering Pear
- Weeping Cherry
- Magnolia

## 16 *Summer Interest:*

### Trees:

- Tulip Tree
- Ginkgo
- Golden Rain Tree
- Crab Apple
- Choke Cherry
- Red American Smoke Tree

## 17 *Fall Interest:*

### Trees:

- Rocky Mountain Maple
- American Hornbeam
- Service Berry
- Staghorn Sumac

### Shrubs:

- Burning Bush
- Low Grow Sumac

## 18 *Winter Interest:*

### Trees:

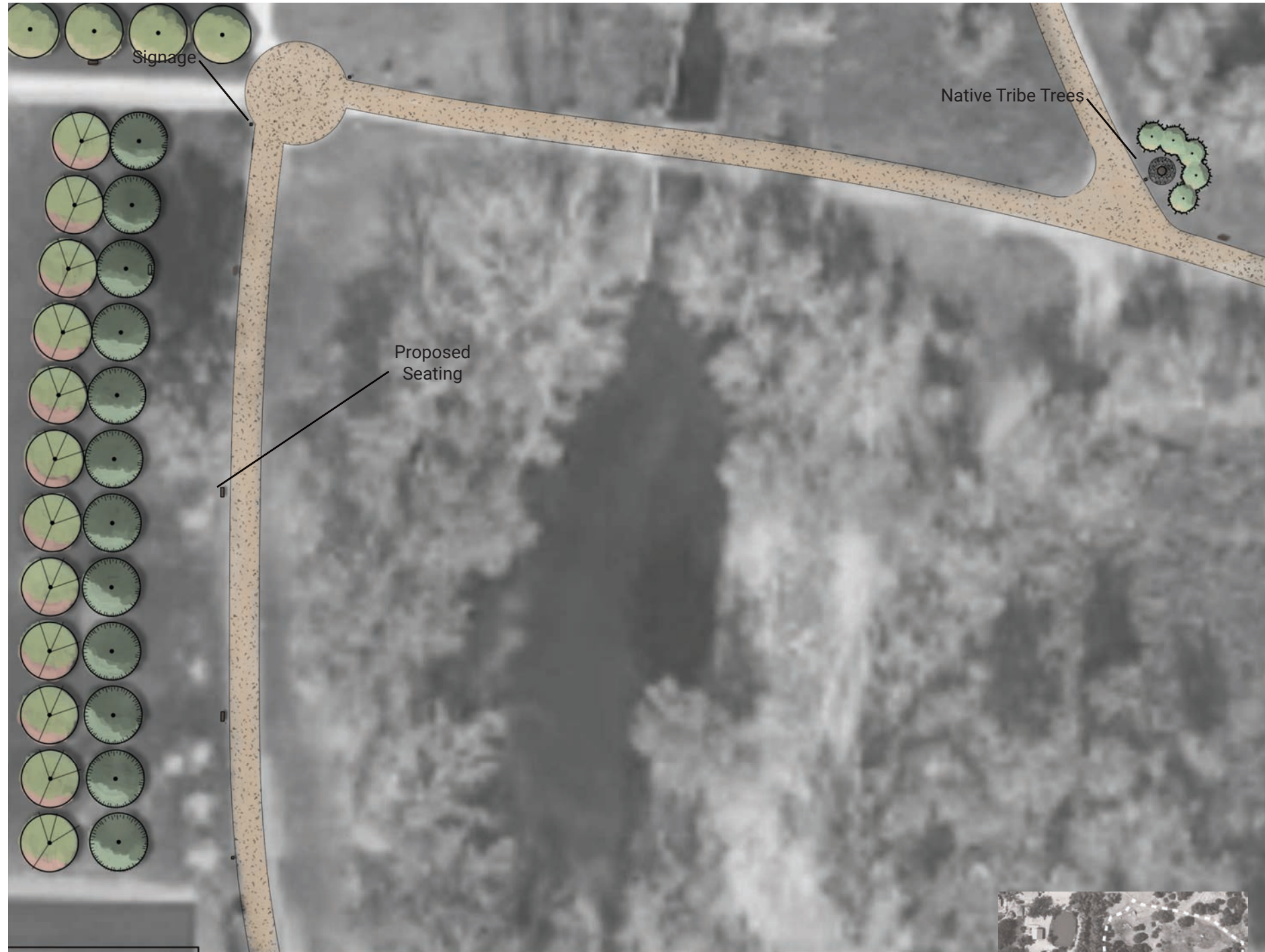
- Douglas Fir
- Scotch Pine
- Austrian Pine
- White Fir
- Crab Apples (with fruit)
- Witch Hazel

### Shrubs:

- Red Twig Dogwood
- Yellow Twig Dogwood



# ● Tree Walk



The proposed plant walk includes two rows of trees, with equal spacing, located parallel to the path leading from the existing Outdoor Education Center. These uniform rows harken to the windbreaks that farmers would use for trees that would grow along irrigation ditches. This uniform and straight form is an iconic part of Wheeler Historic Farm. Due to bacteria in the water, the historic trees are dying and the strong visual impact of the windbreak is being slowly eroded. These trees can provide an opportunity to showcase trees that would be a good fit in residential contexts. It is recommended that three different kinds of trees be selected for this area and each species occupy a single row. This allows educators to compare how each tree species differs from the adjacent species.

## Proposed Plant List:

### Trees:

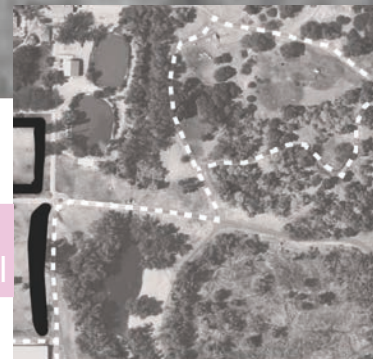
- Ginkgo Biloba
- Burr Oak
- Ohio Buckeye
- Western Catalpa
- Japanese Zelkova
- Kentucky Coffee

Ginkgo Biloba in its fall foliage

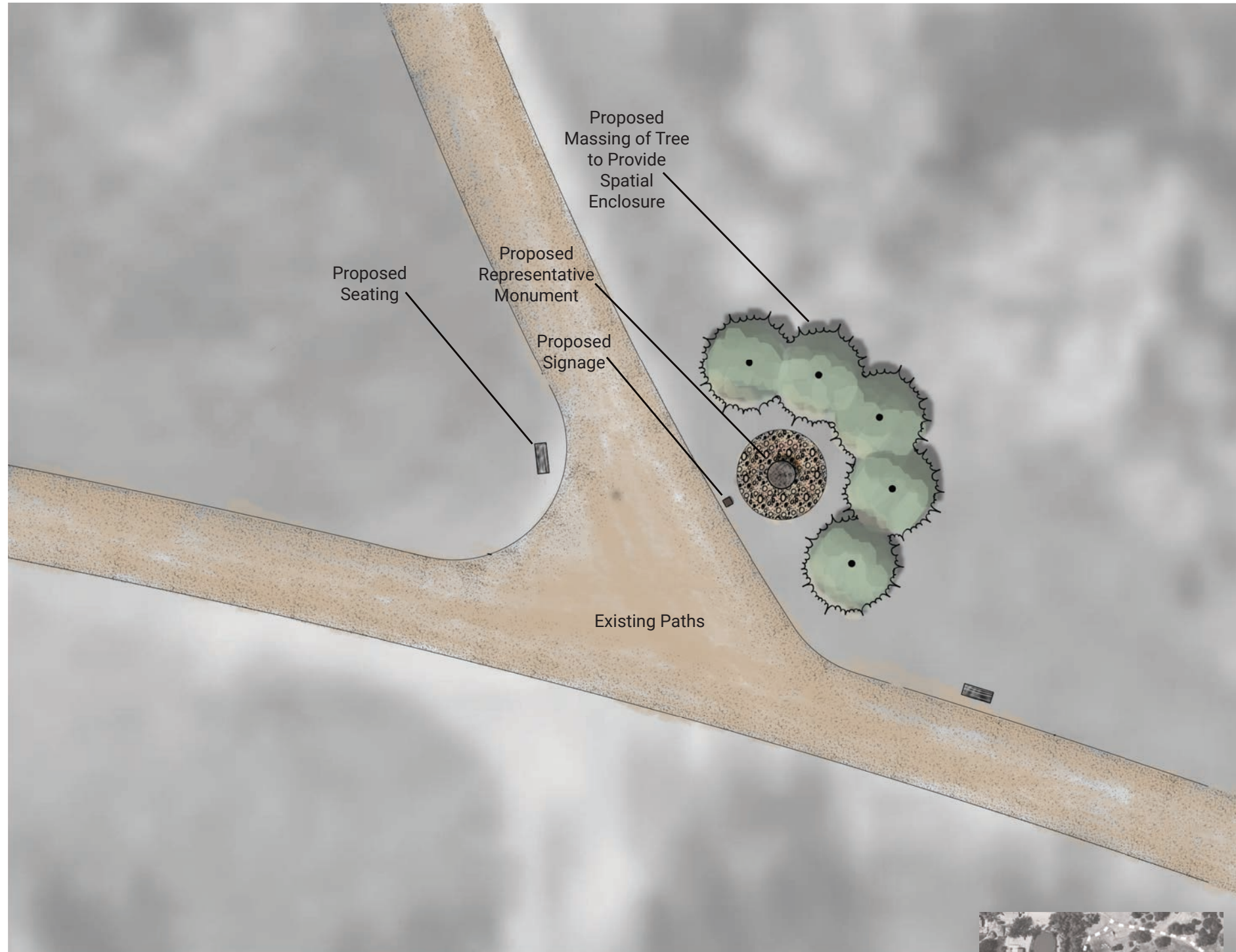


A row of shade trees along a path

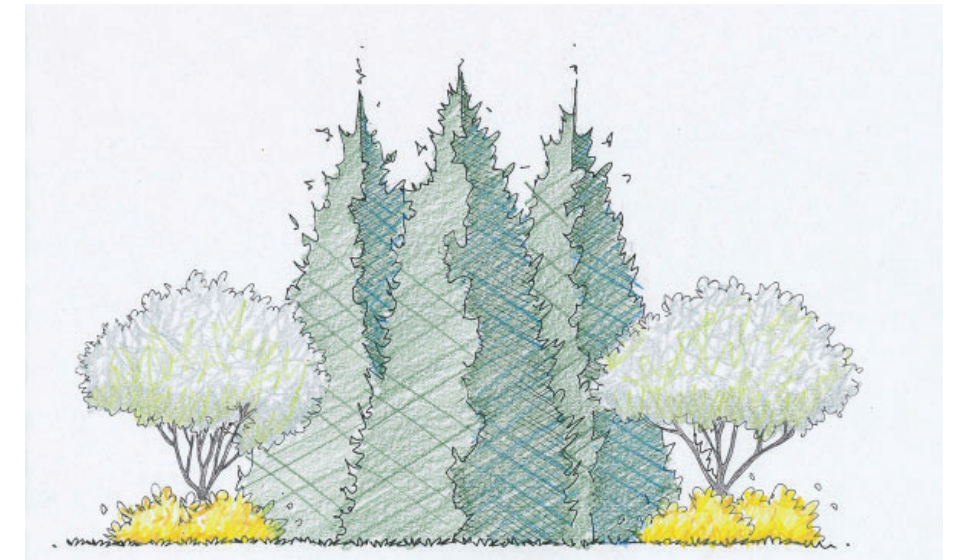
Site Thumbnail



# ● Native Peoples



This node aims to respect and honor the Native Peoples who lived in the Salt Lake basin. The proposal for this node features a monument symbolizing the people of the area and will act as a focal point. Trees will provide a physical and visual backdrop to the monument and separate this node from the surrounding area. These selected trees will feature what may have been used for medicine, structures, food, and tools. This node will help educate about how trees and other vegetation played a crucial role in the life of the Native Peoples who lived in this landscape.

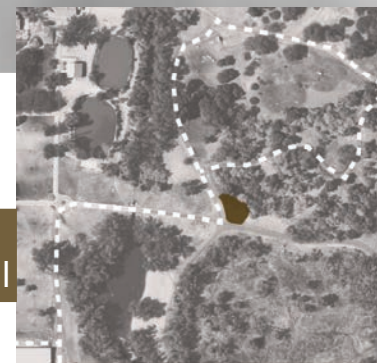


Idea for tree configuration for the back of the monument



Example of a monument that represents the Native Americans

Site  
Thumbnail







### Proposed Site Image

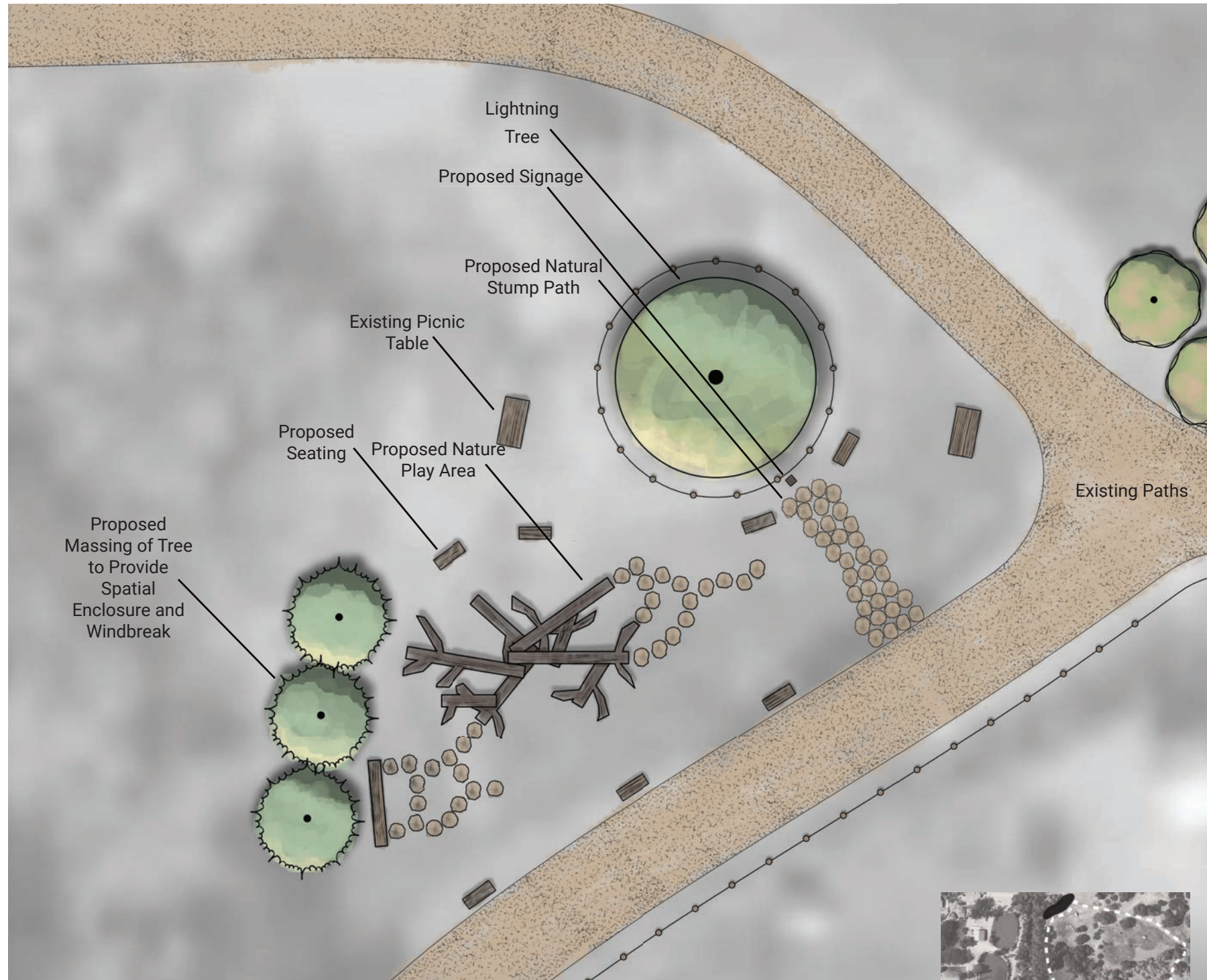
Illustration showing how this site might look with the proposed elements.

### Purposed Plant List:

#### Trees:

- Cottonwood (carving wood)
- Birch (canoes)
- Ponderosa Pine (medicine)
- Pinyon Pine (food)
- Lodgepole Pine (tepees)
- Hawthorne (medicine)
- Juniper (medicine)

# ● Lightning Tree



The Box Elder tree that is at the center of this node is an iconic destination for visitors to Wheeler Historic Farm. It was common to see children climb and play on and around this tree. However, because of the health of the tree and because of safety, a fence was placed around this key feature. To retain the traditional play environment of this node and to enhance the spirit of outside play, a nature-themed play area is proposed. This will allow for safe play while promoting a sense of adventure. Additional trees will be planted around this area to add a better sense of spatial enclosure, separation, and protection from the wind and summer sun.



Evergreen foliage found on the west side of this node



Example of a nature play element



Site Thumbnail



## Proposed Site Image

Illustration showing how this site might look with the proposed elements.

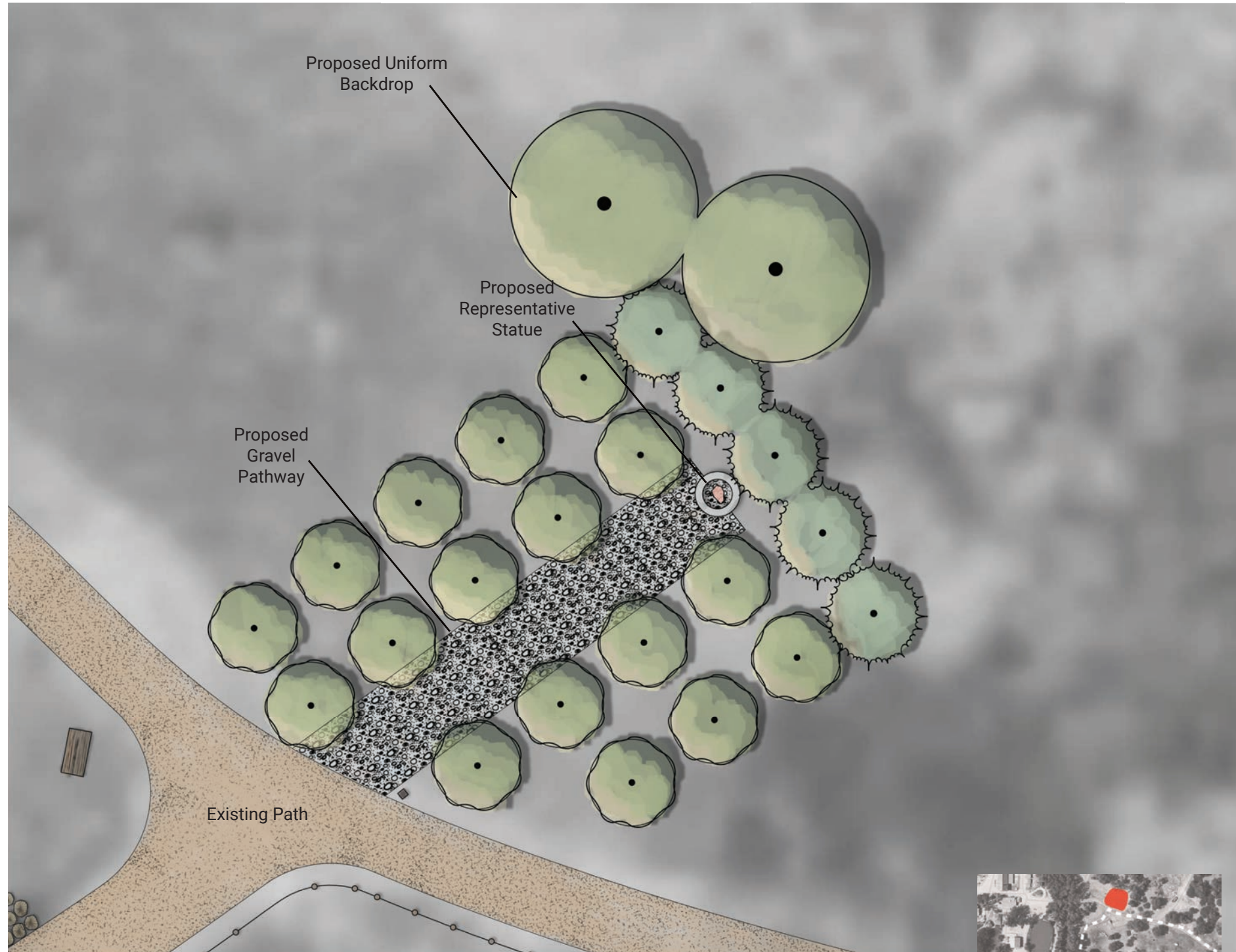
### Proposed Plant List:

#### Trees:

- Scotch Pine
- Austrian Pine
- Douglas Fir
- White Fir
- Box Elder



# ● Orchard



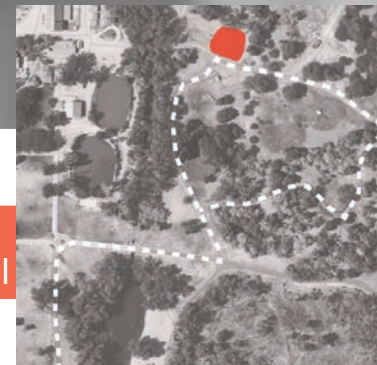
This node showcases some of the orchard products that may have been harvested on a Victorian-era farm. This is accomplished by mimicking the form and feeling of an orchard and using fruit trees to demonstrate the products fruit trees can produce. Cherry trees were the most common fruit trees and would be the recommended tree to showcase. These trees should be planted in parallel rows to mimic the forms of a traditional orchard. A focal point can draw visitors into the orchard space. Additional plants are recommended around the perimeter to control access and limit potential damage to the trees.



Example of proposed representative statue



Rows of fruit trees found around this gravel path



Site Thumbnail



### Proposed Site Image

Illustration showing how this site might look with the proposed elements.

### Proposed Plant List:

#### Backdrop Trees:

- Existing Trees
- Douglas Fir
- Austrian Pine

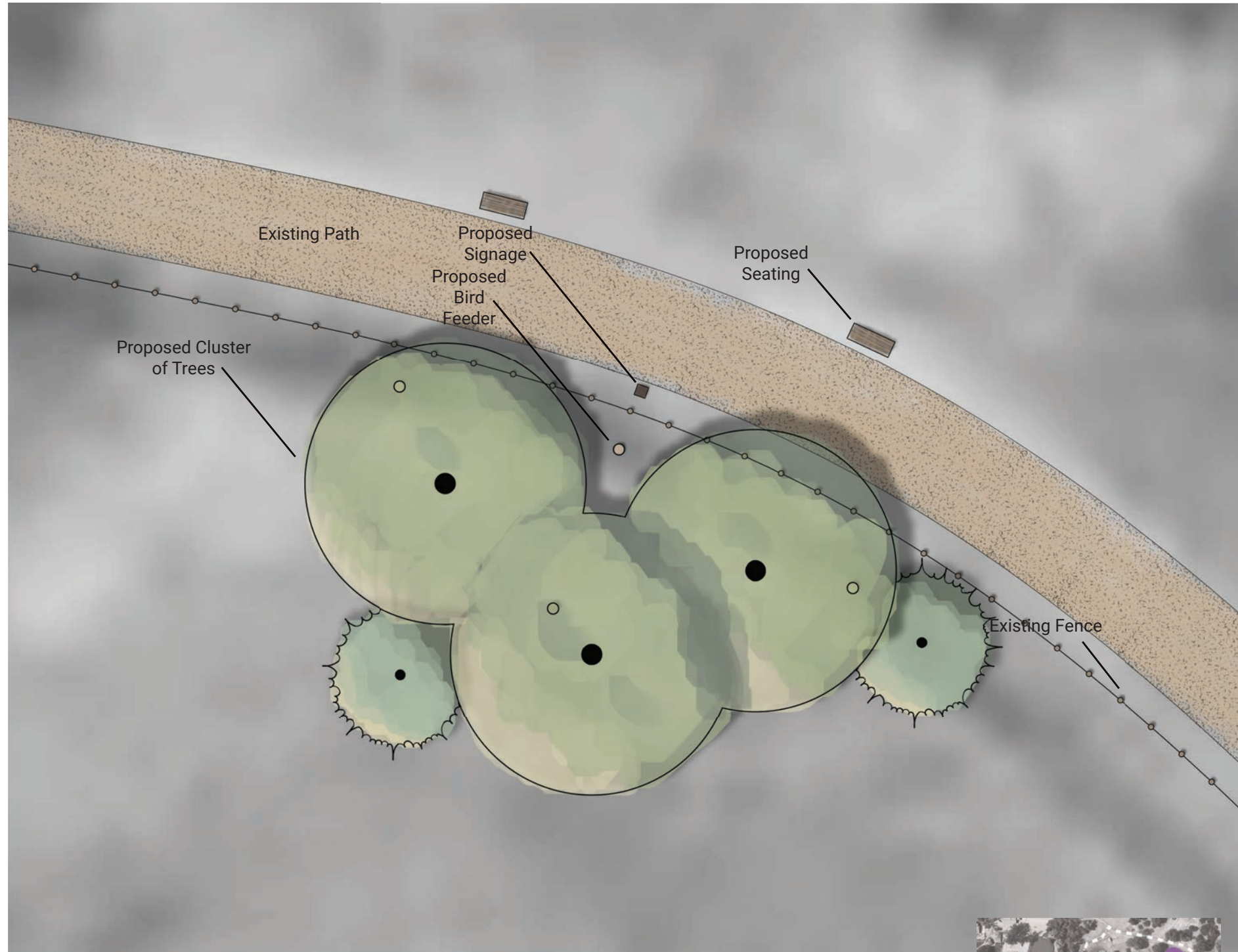
#### Fruit Trees:

- Apple Tree
- Plum Tree
- Apricot Tree
- Cherry Tree (especially)
- Pear Tree

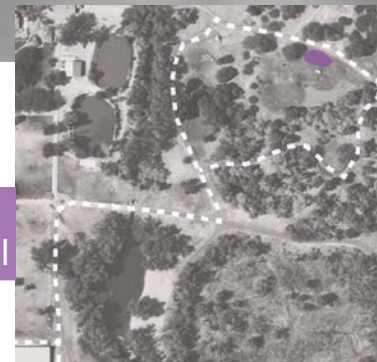
#### Screen Tree:

- Rocky Mountain Maple
- American Hornbeam
- Viburnum

# Birds & Bats



Site Thumbnail



The trees and structures proposed in this node focus on attracting wildlife, specifically birds and bats. Trees act as a food source, habitat, or nesting site and can provide visitors the chance to discover the variety of species that use this site as a gathering spot. Birdfeeders, bat boxes, and birdhouses constructed on posts can be used in an effort to activate this node as trees begin to grow.



Bird feeders on a pole found throughout this area



Bird house hanging from a tree branch



### Proposed Site Image

Illustration showing how this site might look with the proposed elements.

### Proposed Plant List:

- Trees:**
- Eastern Red Cedar
  - White Oaks
  - Crab Apple
  - Serviceberry
  - Mulberry

*Remond Park*

Remond Park is named in honor of the Remond family—John and Nancy Remond and their children, including Charles, Charles Lewis Remond and Sarah Polly Remond.

John "Remond" Remond, an immigrant from Cornwall, West Indies, and his wife Nancy Remond, a free-born African American, first purchased a parcel of land in the early 1800s and built the first cabin on the property. The cabin was destroyed by a fire in the early 1800s and was replaced by a two-story wooden cabin. Both were destroyed in the passage of time and were replaced by the present-day stone cabin. John and Nancy Remond had 10 children, including Charles and Sarah, and are buried at Hammony Grove Cemetery.

Charles Lewis Remond (1810-1870) was one of the very first African Americans to be paid as a laborer on the plantation. He was a free man and worked on the plantation. He was a free man and worked on the plantation. He was a free man and worked on the plantation.

Remond's story has been passed down through the generations. He was a free man and worked on the plantation. He was a free man and worked on the plantation. He was a free man and worked on the plantation.

*"When the world shall learn that mind makes the man, that goodness, moral worth."*



Extension  
UtahStateUniversity

